



ADVANCING RESTORATION



20 VELO AIRMOVERS
8 REVOLUTION DEHUMIDIFIERS
1 FORD TRANSIT CONNECT VAN

- AIRMOVERS
- DEHUMIDIFIERS
- AIR FILTRATION
- SPECIALTY
- EXTRACTORS
- INSTRUMENTS
- CHEMICALS
- EDUCATION



ON DEMAND!



Website. At www.Dri-Eaz.com, access product features and specifications, owner's manuals, product photos, videos and promotional flyers, and more. Visit our online library for newsletters, technical tips and articles, all downloadable and FREE.

Live Support. Available M-F 7 a.m.-5 p.m. PT. Chat live online with a Dri-Eaz specialist.

Call toll-free. 800-932-3030. Available M-F 7 a.m.-5 p.m. PT.



RSA Online. Boost your restoration and business know-how at your convenience and at your own pace. See our growing list of online course offerings on p. 13.



Social media. Follow us on Facebook and Twitter! Stay informed about new products, trade show news, customer events, company news and more.

YouTube. See product demos, customer recommendations and training videos.



HOW TO BUY



Scan QR code with device to find your nearest distributor.

Dri-Eaz has the industry's largest network of authorized distributors located across North America. Our distributors are highly knowledgeable about Dri-Eaz products and are ready to serve your restoration needs. To find a distributor near you, go to our "How to Buy" page:

HowToBuy.drieaz.com



NEW PRODUCTS



REVOLUTION™ LGR DEHUMIDIFIER

Smaller and better. Technological advancements deliver category leading LGR performance in half the size of other dehumidifiers. Stackable and easy to transport, the Revolution's space-saving design lets restorers pack more LGR drying power into their trucks, saving extra trips and boosting profitability. Delivers "Large" Xactimate water removal!
p. 2

HVE 3000 PORTABLE EXTRACTOR

The new HVE 3000 is both the ultimate flood pumper and the ultimate truck-mount booster – all in one unit!
p. 7

DRI-POD FLOOR DRYER

Dry floors fast with the highly portable Dri-Pod—it weighs just 10 lbs! A specially designed outlet grill directs warm, dry air from above in a powerful 360° pattern across the floor.
p. 5

EXTRACTION TOOL

The tool you'll want for every restoration project for its deep extraction, low-fatigue design and simple operation.
p. 7

VELO™ & VELO PRO AIRMOVERS

Amazing drying results, low amp draw, extreme versatility and unsurpassed portability – so many good reasons to try the new Velo or Velo Pro airmover.
p. 4



NEW—HOSPITAL-GRADE LIGHTED PLUG ON DRI-EAZ PRODUCTS!

CONTENTS

DEHUMIDIFIERS	2
AIRMOVERS	4
AIR FILTRATION	6
EXTRACTION	7
HARDWOOD FLOOR DRYING	8
CHEMICALS	9
MOISTURE DETECTION	10
EDUCATION	12



DEHUMIDIFIERS

PROUDLY BUILT IN USA



Winning performance, smart controls

i-SERIES DEHUS



New!



REVOLUTION LGR WITH OPTIONAL DUCTING KIT



6 Revolution Dehumidifiers and 20 Velo Air movers stacked in a compact Ford Transit



REVOLUTION™ LGR

The Revolution fits state-of-the-art LGR technology into the most compact design ever achieved for the restorative drying industry. Stackable and easy to transport, the Revolution's space-saving design lets restorers pack more drying power into their trucks, saving extra trips and boosting profitability.

- » **THE SMALLEST, LIGHTEST XACTIMATE "LARGE" CATEGORY LGR DEHU EVER!**
- » **PRECISION CONTROL TECHNOLOGY** delivers best low-grain performance in its class
- » Secure, compact stacking
- » **EASIEST TO TRANSPORT MULTIPLE UNITS** on a handtruck
- » **PERFORMS AS A "LARGE" DEHU YET FITS WHERE OTHERS DON'T** – crawlspaces, bathrooms, kitchens, etc.
- » **FASTEST ACCESS** for cleaning and maintenance
- » **MAKE FEWER TRIPS** – make more profit!

F413-115V

\$1,849 SUGG. LIST (US)

XACTIMATE® CODE: WTR DHM> (L)

LGR 7000XLi

Breaking performance barriers as the category leader, the LGR 7000XLi removes more water than any other dehumidifier in its category!

- » **ADVANCED CROSSFLOW TECHNOLOGY** maximizes efficiency even in low grain environments. Built-in sensors monitor performance for fully automatic fan speed operation.
- » **BUILT-IN HUMIDISTAT** and plain-English control panel messages.
- » **SEALED LARGE-CAPACITY PUMP BASIN** – handles the water from an unintentional defrost after a power outage or other unexpected shut-down.
- » **ERGONOMIC DESIGN.** Taller handle for easier use on stairs, folds down for storage. Integrated cord and hose storage.
- » **VERSATILE APPLICATION** – standard 12 in. ductable floor level outlet.
- » **LEGENDARY ROTOMOLDED HOUSING** – practically indestructible – resists dents and dings – stackable for storage – saves room in warehouse.

F412

\$2,350 SUGG. LIST (US)

XACTIMATE® CODE: WTR DHM>> (XL)



LGR 2800i

High heat

The LGR 2800i provides high performance with low energy consumption - 130 pints per day at AHAM with just 8 amps. Automatic high temp operation- up to 125°F.

F410

\$2,780 SUGG. LIST (US)

XACTIMATE® CODE: WTR DHM>> (XL)

LGR 3500i

Maximize your dehumidification

Delivering 170 pints at AHAM at only 10.5 amps, the LGR 3500i outperforms all other portable dehumidifiers.

F411

\$3,140 SUGG. LIST (US)

XACTIMATE® CODE: WTR DHM>>> (XXL)



Delivering Superior LGR performance

Don't be fooled! Some manufacturers claim LGR performance simply because their unit removes "some" water in low grain conditions, although controlled testing shows it may be just a pint or less per day. **The i-Series' self-monitoring control system provides the superior LGR performance you need to dry jobs down fast.**

In fact, all Dri-Eaz units labeled "LGR" provide significant water removal at low grains, up to 22 pints, depending on the model. **For true LGR performance, look to Dri-Eaz.**

DEHUMIDIFIER ACCESSORIES:



EVOLUTION® LGR
Our best-selling LGR dehumidifier offers a compact design with excellent low-grain performance

ITEM #F292-A
\$1,849 SUGG. LIST (US)
XACTIMATE® CODE: WTR DHM> (L)



DRIZAIR® 1200
Standard refrigerant dehumidifier with user-friendly controls in a rugged package

ITEM #F203-A
\$1,485 SUGG. LIST (US)
XACTIMATE® CODE: WTR DHM (M)



REVOLUTION DUCTING KIT

This complete kit lets you secure layflat ducting (to your Revolution LGR).

F530
\$35 SUGG. LIST (US)



VMAX ADAPTER

Directs dry warm air directly across the floor for faster drying. For the 3500i and 2800i.

F422
\$125 SUGG. LIST (US)



HAF FILTERS

Efficient, high air flow filtration keeps equipment operating efficiently.

Visit HAF.drieaz.com for part numbers and current prices.



LAYFLAT DUCTING

Strong, 4-mil poly ducting – 500 feet per roll. 13 in. wide, expands to 8.3 in. diameter. Cut to length.

F268
\$245 SUGG. LIST (US)



COIL CLEANER

Heavy duty foam detergent. Quickly removes dirt and dust from coils, fan blades, and more.

S402
\$119 BOX OF 12
SUGG. LIST (US)



THE IMPORTANCE OF AHAM-VERIFIED SPECIFICATIONS

Dri-Eaz dehumidifiers are tested by Intertek, an official laboratory under contract with the Association of Home Appliance Manufacturers (AHAM), to ensure that we are providing the most accurate dehumidifier specifications on water removal performance and amp draw. When you use Dri-Eaz specs to calculate equipment for the job, you can be assured that you're making equipment decisions based on tested and verified performance data.



COMPARE DEHUS

	LGR 3500i	LGR 2800i	LGR 7000Xli	REVOLUTION® LGR	EVOLUTION® LGR	DRIZAIR® 1200
MODEL	F411	F410	F412	F413-115V	F292-A	F203-A
3M™ HAF FILTER	F421	F421	F368	F372	F372	F368
TYPE	Low Grain Refrigerant	Low Grain Refrigerant	Low Grain Refrigerant	Low Grain Refrigerant	Low Grain Refrigerant	Standard Refrigerant
DIMENSIONS (H x W x D)	40.5 x 23 x 24 in. 103 x 58 x 61 cm	40.5 x 23 x 24 in. 103 x 58 x 61 cm	33.5 x 20 x 20 in. 85 x 51 x 51 cm	17.6 x 12.5 x 21.5 in. 44.7 x 31.8 x 54.6 cm	33.5 x 20.7 x 20.7 in. 85 x 52.5 x 52.5 cm	32 x 20 x 19.5 in. 83 x 50 x 50 cm
WEIGHT	160 lbs. 73 kg	160 lbs. 73 kg	107 lbs. 49 kg	65 lbs. 29.5 kg	92 lb 42 kg	80 lb 36 kg
TESTED WATER REMOVAL AHAM (80°F/60%RH)	170 pints 80.5 L /day*	130 pints 61.5 L /day*	130 pints 61.5 liters / day*	80 pints 38 L /day*	70 pints 33 L /day*	64 pints 30 L /day*
MAX AT SATURATION	264 pints/day 124.9 L/day	238 pints/day 112.6 L/day	235 pints/day 111.2 L/day	139 pints/day 66 L/day	143 pints/day 67.7 L/day	145 pints/day 68.6 L/day
PROCESS AIR RATING	400 CFM 697.7 CMH**	400 CFM 697.7 CMH**	325 CFM 552 CMH**	121-180 CFM 206-306 CMH**	160 CFM 272 CMH	227 CFM 386 CMH
HANDLE	Rotomolded	Rotomolded	Steel, fold-down	Steel, fold-down	Steel, fold-down	Metal
POWER 115V	10.5 amps	8 amps	8.3 amps	6.2 amps	5 amps	6.4 amps
DEFROST TYPE	Fan defrost				Hot-gas bypass	
OPERATING RANGE	33-100°F 1-38°C	33-125°F 1-52°C	33-100°F 1-38°C	33-100°F 1-38°C	33-100°F 1-38°C	33-100°F 1-38°C
CONTROLS	Electronic Touchpad with Humidistat and Hour Meter				Electronic Touchpad with Hour Meter	
WATER PUMP-OUT	Centrifugal		Submersible pump		Centrifugal	
REFRIGERANT	R 410a used in all models manufactured since Jan. 1, 2010					
WHEELS	Semi-pneumatic		—		Semi-pneumatic	
HOUSING	Rotomolded polyethylene					
SAFETY	ETL certified to UL/CSA Standard			ETL certified to CSA Standard		ETL certified to UL/CSA Standard UL/CSA-UL listed

* Water removal capacity (at AHAM) in pints per day is verified by AHAM based on tests by a laboratory under contract to AHAM. **Max. Speed automatically adjusted for optimal performance. SPECS SUBJECT TO CHANGE WITHOUT NOTICE.



AIRMOVERS



Leading the market in performance and durability.

Dri-Eaz is dedicated to ensuring you the most efficient drying by balancing high velocity, superior CFM, low amp draw and static pressure for specific restoration needs, while providing ease-of-use features like fast disassembly for cleaning and GFCI circuits for daisy chaining. And Dri-Eaz airmovers are famous for their restoration-tough durability and reliable, long-lasting performance.

FASTEST DRYING IN THE INDUSTRY

The Velo™ airmover breaks performance barriers with unique patent-pending airflow technology! PLUS – Sleekest design. Ultra-low amps. Five-position versatility.

New!

The Velo's concentrated high velocity airflow drives amazing results – from an airmover that's **half the height** of snail shell units and **draws just 1.9 amps!** Rapidly dry the largest area ever – or tackle special challenges with any of the unit's **5 versatile positions**.

- » **LESS THAN HALF THE POWER CONSUMPTION** – use twice as many airmovers per circuit for double the drying power!
- » **DAISY CHAIN UP TO 6 UNITS PER 15-AMP CIRCUIT** with GFCI outlet– or 10 units with the variable speed Velo Pro
- » **COMPACT** – Fit twice as many airmovers on every truck and stash an extra Velo anywhere!
- » **5 DRYING POSITIONS** for walls, ceilings, hallways, staircases, cabinets, crawlspaces
- » **RUGGED ROTOMOLDED HOUSING WITH FLEX HANDLE** – covered by lifetime limited warranty
- » **LIGHT ENOUGH TO CARRY 2 OR EVEN 4 VELOS AT ONCE** or up to 6 easily with a handtruck!



BONUS Velo Pro Features



VARIABLE SPEED

KICKSTAND

HEPA KIT
DOUBLE THE UTILITY OF YOUR VELO!



F504

\$295 SUGG. LIST (US)
XACTIMATE® CODE: WTR DRY

F505

\$335 SUGG. LIST (US)
XACTIMATE® CODE: WTR DRY

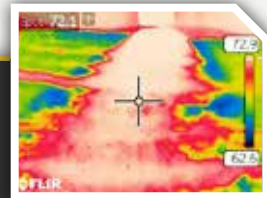


	VELO	VELO PRO
POWER	1.9 AMPS	1.2-1.9 AMPS
MOTOR	.25 HP	.25 HP
SPEEDS	1-SPEED	VARIABLE SPEED
WEIGHT	21 LBS. 9.52 KG	21 LBS. 9.52 KG
DIMENSIONS (D x W x H)	23 x 18 x 9 IN.	23 x 18 x 9 IN.
CORD LENGTH	58.4 x 45.7 x 22.9 CM 15 FT. 4.6 M	58.4 x 45.7 x 22.9 CM 15 FT. 4.6 M

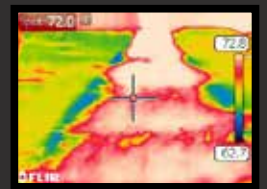
VELO

Actual Airflow Thermal Images

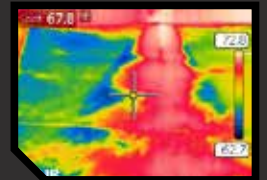
3 min. 20 SEC. drying time (White=Dry)



SAHARA



COMPETITOR



SAHARA PRO X3 TURBODRYER®

Full-featured airmover offers high velocity drying with low amp draw and longer reach.

F351

\$365 SUGG. LIST (US)
XACTIMATE® CODE: WTR DRY

POWER	4 AMPS
MOTOR	0.33 HP
SPEEDS	3-SPEED
VELOCITY	2071 FT/MIN

SAHARA HD

Our powerful 1 HP TurboDryer dries inside walls and cabinets with ease.

F352

\$489 SUGG. LIST (US)
XACTIMATE® CODE: WTR DRY++

POWER	10 AMPS
MOTOR	1.0 HP
SPEEDS	3-SPEED
VELOCITY	3206 FT/MIN

SAHARA E

Professional quality Dri-Eaz TurboDryer with an economical price.

F350

\$305 SUGG. LIST (US)
XACTIMATE® CODE: WTR DRY

POWER	7.2 AMPS
MOTOR	.25 HP
SPEEDS	1-SPEED
CFM	926 CUBIC FT/MIN

AIRMOVER ACCESSORIES

WWW.DRI-EAZ.COM | 800-932-3030



New!

VELO AND VELO PRO HEPA KIT

Use the Velo or Velo Pro for drying and clear the air for workers or homeowners, especially with asthma or allergies. The kit features a HEPA media filter and pre-filter to minimize dust and particulates during restoration.

F518 \$149 SUGG. LIST (US)
(Velo not included)

DRI-EAZ® TURBODUCT

Ventilate or dry confined spaces. Attach a Sahara HD or Sahara Pro X3 for 15 feet of 10-inch diameter ducting.

F134 \$370 SUGG. LIST (US)

STO&GO DUCTING

Vortex ducting for powerful ventilation. 25 feet of collapsible 12-inch ducting with a built-in protective case.

F405 \$289 SUGG. LIST (US)

MAXGRIP CARPET CLAMP

Securely holds carpets during drying (for Sahara)

F349 \$555 PACK OF 10 (US)

EQUIPMENT STORAGE BRACKET

Wall mount system helps keep Sahara airmovers securely stored on trucks.

F362 \$165 PACK OF 10 SUGG. LIST (US)

TURBOVENT® 48 INTER-AIR DRYING SYSTEM™

Ideal for drying wet wall cavities. Attach the TurboVent 48 directly to any Sahara snout to intensify wall drying through a 48-inch wide contact area.

F108 \$215 SUGG. LIST (US)

SAHARA SNOOT ADAPTER KIT

Tackle three areas at once. Expand your TurboVent® InterAir Drying System with an additional snout adapter. Works with any Sahara airmover.

F201 \$200 SUGG. LIST

TURBOVENT® INTERAIR DRYING SYSTEM™

Dry inside cabinets bases and under stairs. Attach to your Sahara TurboDryer® to force air into difficult-to-dry areas.

F200 \$510 SUGG. LIST (US)

AXIAL AIRMOVERS



ACE

Top-of-the-market CFM per amp with six-position drying versatility.

The Ace® TurboDryer® produces the most CFM per circuit of any airmover on the market. Stackable for compact storage and transport.

F259 \$445 SUGG. LIST (US)

XACTIMATE® CODE: WTR DRY+

POWER	1.5 AMPS
MOTOR	.25 HP
SPEEDS	2-SPEED
CFM	1881 CUBIC FT/MIN



JET CXV

Industry's highest velocity airflow, faster drying and easy cleanup.

The three-speed Jet delivers up to 3100 CFM in an aerodynamic design that maximizes laminar flow. At the 1.5-amp speed, you can daisy chain up to 8 units on a single 15 amp circuit. A stackable hinged-case makes cleaning and maintenance easy.

F367 \$459 SUGG. LIST (US)

XACTIMATE® CODE: WTR DRY+

POWER	1.5, 2.0, 3.0 AMPS
MOTOR	.25 HP
SPEEDS	3-SPEED
CFM	3100 CUBIC FT/MIN

SPECIALTY AIRMOVERS



VORTEX

Powerful ventilation – even with extra-long ducting runs.

The Vortex has the power you need to ventilate structures, create negative pressure systems, or enhance ventilation for faster restorative drying. A built-in handle and simple 1-speed switch make operation a snap.

F174-BLU \$615 SUGG. LIST (US)
XACTIMATE® CODE: WTR DRY++

POWER	7.4 AMPS
MOTOR	1.0 HP
SPEEDS	1-SPEED
CFM	2041 CUBIC FT/MIN
STATIC PRESSURE	3.2 IN 8.1 CM



STUDEBAKER AIRPATH™

Dry carpets and hard surface floors with 360° airflow at 40 mph.

F377 \$595 SUGG. LIST (US)

POWER	7.5 AMPS
MOTOR	1.0 HP
SPEEDS	2-SPEED

DRI-POD

At only 10.6 lbs and 15 inches across, the high airflow of the Dri-Pod is perfect for small spaces like closets and stairway landings. Dry carpet, tile, vinyl or hardwood floors faster than ever!

F451 \$175 SUGG. LIST (US)

POWER	1.1 AMPS
WEIGHT	10.6 LBS. 4.8 KG.
SPEEDS	1 SPEED





AIR FILTRATION



The industry's #1 choice.

With user-friendly and versatile features, the HEPA 500 is ideal for handling indoor air quality needs on every restoration job.

DEFENDAIR® HEPA 500

Restorers' favorite high efficiency portable air scrubber/negative air machine.

High efficiency air filtration, the maximum clean air rating from AHAM, and tremendous versatility – all with a small footprint! The DefendAir HEPA 500 combines advanced clean air performance with features that help make improving IAQ easier.

- » **ADVANCED 2-STAGE FILTRATION TECHNOLOGY**, plus optional activated carbon filter — or 3-stage first-pass HEPA filtration with optional DOP filter
- » **DAISY CHAIN CAPABILITY** – link up to 3 units on 1 power outlet
- » **VARIABLE CFM ON EACH UNIT** – up to 1500 CFM on one circuit
- » **STACKABLE, LIGHTWEIGHT AND EASILY TRANSPORTABLE**

ITEM #F284

\$999 SUGG. LIST (US)

XACTIMATE® CODE: WTRNAFAN



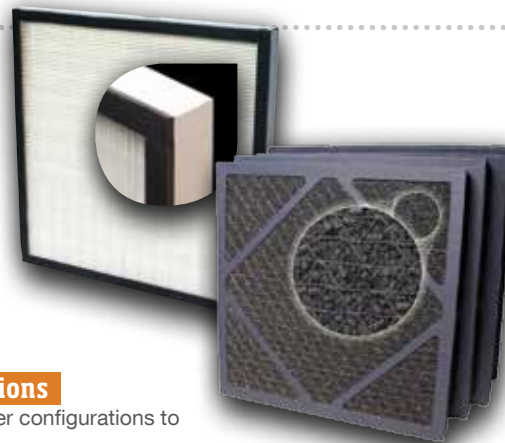
POWER	115V/3 amps
DIMENSIONS (H x W x D)	24.6 x 26.2 x 18.2 in. 62.5 x 66.5 x 46.2 cm
DUCT SIZE	Intake: 12 in. 30.5 cm Outlet: 8 in. 20.3 cm
WEIGHT	44 lbs 19.9 kg
VARIABLE AIR MOVEMENT	250—500 CFM
STORAGE/TRANSPORT	Stackable
HOUSING MATERIAL	Rotomolded polyethylene
DAISY CHAIN	Up to 3 units
CIRCUIT PROTECTION	GFCI protected outlet
POWER CORD LENGTH	25 ft. 7.62 m
HEPA FILTER INDICATOR LIGHT	Primary Filter change
SAFETY	UL, C-UL Listed



FILTERS

DOP STAGE 2 PRE-FILTER

Makes the HEPA 500 a high efficiency three-stage air filtration unit, ready for any sensitive job requiring first-pass HEPA filtration. With the standard pre-filter, DOP Stage 2 pre-filter and the HEPA primary filter installed, the HEPA 500 passes laboratory DOP testing conducted per ANSI standards, achieving an efficiency rating of 99.97% against oily aerosol particles down to 0.3 microns.



ACTIVATED CARBON FILTER

Equips the HEPA 500 to capture a wide variety of volatile organic compounds (VOCs), including soot and smoke, food odors, fumes from paint and paint thinners, sewer odors, and many other compounds. Individually wrapped filters with uniformly sized pellets help to ensure maximum airflow and maximum contact while minimizing filter dust.

Standard HEPA 500 Filter Configurations

The HEPA 500 may be set up in a variety of filter configurations to suit your particular air filtration requirements.

FILTERING APPLICATION	FIRST Pre-Filter position	SECOND Pre-Filter position	FINAL Primary filter (HEPA)
Clean water loss air scrubbing	1st Stage not necessary	2nd Stage Pre-Filter	HEPA 500 filter cartridge
Standard air scrubbing	1st Stage Pre-Filter	2nd Stage Pre-Filter	HEPA 500 filter cartridge
"First Pass" efficiency air filtration	2nd Stage Pre-Filter	DOP Stage 2 Pre-Filter	HEPA 500 filter cartridge
Air scrubbing and odor control	Activated Carbon Filter	2nd Stage Pre-Filter	HEPA 500 filter cartridge

HEPA 500 filters

- F270** 1ST STAGE PRE-FILTER (12 PK)
- F271** 2ND STAGE PRE-FILTER (12 PK)
- F415** DOP STAGE 2 PRE-FILTER (4 PK)

- F321** HEPA 500 FILTERS (8 PK)
- F397** ACTIVATED CARBON FILTER (4 PK)

Download a FREE copy of the Guide to Air Scrubbing at HEPA500.drieaz.com

To learn more about the features and benefits of the HEPA 500 and air filtration, scan this code.





EXTRACTION

HVE 3000

Ultimate Flood Pumper and Inline Filter and Truckmount Booster

The HVE3000 is the **ONLY three-function inline filter, truckmount booster and pumpout AND portable flood extractor.** Team it with the Dri-Eaz Extraction Tool for fast extraction in apartments, hotels, schools, hospitals, and offices – wherever access, security or noise issues prevent use of a truckmount. Team it up with a truckmount and the HVE3000 will help keep your recovery tank clean and maximize your truckmount vacuum performance even on the longest hose runs.

- » **HIGH MANEUVERABILITY.** Unique housing design makes moving the unit easy - just pull on the vacuum hose. Slim profile fits through a standard doorway – only 22.5 in. wide.
- » **HIGH VACUUM PERFORMANCE.** Includes two vacuum blowers – one two-stage blower plus a second “2-plus” blower for maximum performance.
- » **SUPERIOR DEBRIS HANDLING.** A high flow, high volume clog-resistant sump pump – handles up to ½ in. solids. Plus, the large, easy-clean stainless steel filter basket captures all debris larger than ¼ in.

ITEM #F479 \$2,995 SUGG. LIST (US)



WATER LIFT CFM	160 in. 100 CFM
DISCHARGE RATE	50 gpm @ 5 ft. of head
TANK CAPACITY	12 gal. 45 L
DIMENSIONS (H x W x D)	40.2 x 22.5 x 24.8 in. 102.1 x 57.2 x 63 cm
POWER (120V) (2 CIRCUITS)	12A (Pumpout + Blower 1) 13.5A (+ Blower 2)
SUMP PUMP POWER	1/3 HP
WEIGHT	132 lbs. 60 kg

HVE WITH EXTRACTION TOOL

1



FLOOD EXTRACTOR WITH ROVER

2



INLINE TRUCKMOUNT BOOSTER

3



EXTRACTION TOOL

Makes flood extraction more profitable

The new Dri-Eaz Extraction Tool significantly improves initial extraction productivity and increases extraction profitability.

Its patent-pending glide creates a powerful seal to maximize carpet compression while still allowing enough airflow to ensure deep extraction from all carpet types. A convenient vacuum break lever allows for smooth operation, no matter the carpet type. Plus, the tool is quick and easy to clean out and comfortable to operate even on the largest projects.

ITEM #F511 \$595 SUGG. LIST (US)

- » **ERGONOMIC ROTOMOLDED HANDLE FOR ALL-DAY COMFORT** – use right- or left-handed.
- » **SAVE YOUR BACK!** Instant vacuum release lever means there's no need to tilt or reposition tool.
- » **EASY-CLEAN ROTOMOLDED HEAD WITH REPLACEABLE GLIDE.**
- » **VIEW WINDOW IN HEAD** shows extraction progress; may be removed for cleaning.
- » **RUGGED 2" STAINLESS STEEL TUBE.**
- » **AFFORDABLE – JUST \$595 (MSRP)!**
- » **SAVES EXTRACTION TIME SO INCREASES YOUR PROFIT!**



ROVER® HIGH VOLUME EXTRACTOR

Fast extraction with unsurpassed maneuverability

- » Extraction can be visually monitored through the **CLEAR TAKE-UP TUBE**
- » **HIGH INTENSITY LED WORKLIGHT** clearly illuminates extraction path
- » **REPLACEABLE POLYMER GLIDE** seals firmly over all carpets to provide deep extraction
- » **JOYSTICK IS RATED FOR 5 MILLION CYCLES** for years of service
- » Front loading wheels make the unit easy to transport
- » **UNIT FOLDS FLAT FOR SPACE-SAVING STORAGE**

ITEM #F354 \$3,709 SUGG. LIST (US)
XACTIMATE® CODE: WTR EXTW

Scan QR code with device to see the HVE 3000 and Extraction Tool at work!



WEIGHT	67 lbs. 30 kg
EXTRACTION PATH WIDTH	19.75 in. 50.2 cm
DIMENSIONS (H x W x D)	45.7 x 22 x 27.6 in. 116 x 56 x 70 cm
SPEED	2-speed switch
MOTOR	110 W (0.148 HP each motor)
POWER	115V/3 amps
CORD LENGTH	45 ft. 13.7 m
SAFETY	ETL certified to UL/CSA Standard



DRIFORCE



AirWolf F228

DriForce F211-BU



AIRWOLF/WOLFPACK

RESCUE MAT



HARDWOOD FLOOR DRYING



Wood floors are highly vulnerable to water damage, but by using Dri-Eaz floor drying systems, in many cases these expensive floors can be returned to like-new condition.

DRIFORCE® INTERAIR DRYING SYSTEM

- » Speed up the drying of wall cavities, under cabinets, stairwells and tubs
- » Small ¼ in. holes are easy to repair
- » Use positive or negative pressure to force air in or vacuum air out
- » Can dry up to 90 linear feet of wall space

ITEM #F211
\$2,110 SUGG. LIST (US)
 XACTIMATE® CODE: WTR WALL

COMPLETE SYSTEM INCLUDES:

- | | |
|----------------------------|-----------------------------|
| 1 DriForce Airmover | 5 coupler fittings |
| 13 7 ft. hoses w/ cuffs | 2 T-fittings |
| 8 manifolds | 25 tube extender connectors |
| 1 400 ft. PVC tubing | 1 muffler |
| 100 ¼-in. injector nozzles | 2 wheeled duffel bags |
| 4 manifold end caps | |

DRIFORCE AIRMOVER UNIT ONLY:

ITEM #F211-BU
\$1,570 SUGG. LIST (US)

DRIFORCE AIRMOVER SPECS

MODEL	F211
DIMENSIONS (H x W x D)	14 x 14 x 12 in. 36 x 36 x 30 cm
WEIGHT	14.5 lbs. 7 kg
MOTOR SPEEDS	1-speed
MAX. STATIC PRESSURE	38 in. 97 cm
MAX POWER 115V	4.8 amps
AVG. POWER 115V	3 amps
STACKABLE	Yes
SAFETY	UL, C-UL Listed

RESCUE MAT® HARDWOOD FLOOR DRYING SYSTEM

- » Just one hose connection per mat offers quick setup
- » Gasketed edge creates powerful, automatic seal—no tape needed
- » DriForce draws out trapped water vapor
- » Use with a portable flood extractor to extract water from below hardwood floor
- » Combine with the AirWolf/WolfPack for fastest drying of hardwood floors

COMPLETE SYSTEM INCLUDES:

- 4 46 x 30 in. mats
- 2 23 x 30 in. mats
- 3 7 ft. hose with cuffs
- 2 Connector sleeves
- 6 Hose cuffs
- 5 T-connectors
- 1 Gasket roll

ITEM #F286 \$629 SUGG. LIST (US)
 XACTIMATE® CODE: WTR WFI

ADDITIONAL RESCUE MAT PANEL KIT

PANEL PACKAGE INCLUDES:
 4 46 x 30 in. mats
 2 23 x 30 in. mats

ITEM #F287
\$455 SUGG. LIST (US)

AIRWOLF/WOLFPACK FLOOR DRYING SYSTEM

- » Unbeatable combination of up to 800 CFM and 7 inches of static pressure
- » Drives water from beneath damaged hardwood floors through flutes using positive “push”
- » Accelerates airflow at bottom of hardwood for increased evaporation

AIRWOLF **WOLFPACK**
ITEM #F228 **ITEM #F243**
\$629 SUGG. LIST (US) **\$619** SUGG. LIST (US)
 XACTIMATE® CODE: WTR WFD



When it comes to drying wood floors, patience and persistence pays.

A little patience can make all the difference between saving a wood floor and having to demolish it.

When solid hardwood flooring is exposed to water, only the unfinished underside will absorb water. As the wood absorbs moisture, the bottom expands more than the finish-protected top, causing cupping.

When this cupping appears during the drying process, it may cause some concern for the property owner. Be patient. The cupping will go away. If your drying system is properly set up, regular monitoring will show that the moisture content (MC) is trending downward. Continue drying until the MC reaches the drying goal (or dry standard) and the cupping is gone. Now clean the floor, and for an added touch, apply a coat of polyurethane. In most cases, you won't even need to do a prep sanding.

REMEMBER:

- Hardwood flooring can be restored when exposed to **Category 1 water**.
- **The longer the floor is wet, the longer it will take to dry.**
- **Be patient!** The drying process is done when both the MC returns to normal and the floor lays flat.



Boost your hardwood floor drying expertise by attending an RSA Applied Structural Drying Course.

—David Oakes RSA Instructor

To see full schedule, visit www.RSA-HQ.com or scan this code on your device



DISINFECT/DEODORIZE

microban

MICROBAN MILGO PLUS

One-step disinfectant-cleaner and sanitizer concentrate.

Manufactured exclusively for Dri-Eaz by Microban, Milgo Plus inhibits growth of mold and mildew and handles tough odors like urine, sewage, and perspiration. EPA-registered (#70385-6). Each bottle makes up to 64 gallons of solution, depending on application. See label online at dri-eaz.com

- » **Kills Staphylococcus aureus Methicillin-Resistant (MRSA) and protects against a wide range of bacteria, fungi and viruses, including Hepatitis C, Pseudomonas, Legionella, HIV-1 and many other potentially dangerous microorganisms**
- » **One-step hospital-level disinfectant cleaner**

ITEM #F447 (CASE OF 4 GALLONS)
\$170 SUGG. LIST (US)



MICROBAN MILGO SR

Deodorizer concentrate.

Milgo SR is the best choice for deodorizing stain-resistant carpets. Manufactured exclusively for Dri-Eaz by Microban, Milgo SR deodorizes porous materials like carpet, pad, subfloors, drywall, upholstery, and other affected materials. Add Milgo SR to the laundry to deodorize fabrics in the washing machine! Each bottle makes up to 16 gallons of deodorizing solution.

ITEM #F448 (CASE OF 4 GALLONS)
\$139 SUGG. LIST (US)

CUSTOMER SUPPORT

FIRST VISIT OUR WEBSITE.

Visit www.dri-eaz.com for product information, owner's manuals, troubleshooting guides, maintenance procedures, warranty policies, frequently asked questions and more.

CAN'T FIND THE ANSWER?

Go to Live Support on our website and chat directly with expert Dri-Eaz staff. Go to Dri-eaz.com and click on the "Live Support" icon to open a chat window. Available M-F, 7 a.m.-5 p.m. PT

NO ACCESS TO INTERNET?

Phone support.
Call 800-932-3030,
7a.m.-5 p.m. PT



WARRANTY

To obtain a free copy of the warranty relevant to your product or products, visit **warranty.dri-eaz.com** or call 800-932-3030.

BASIC COVERAGE INCLUDES:

- Lifetime*** on polyethylene body for Dri-Eaz refrigerant dehumidifiers, airmovers and HEPA 500 air scrubber
- 6 Years*** on compressor and coils for Dri-Eaz refrigerant dehumidifiers
- 1 Year*** parts and labor for Dri-Eaz dehumidifiers, airmovers, air scrubber and instruments

*Subject to terms and conditions. Limited warranties provided to the original purchaser only, beginning from the date of purchase.

Parts and Service

- The Dri-Eaz website: www.dri-eaz.com**
 - » Find detailed parts lists, product manuals including troubleshooting guides, do-it-yourself maintenance procedures, warranty policies, and frequently asked questions.
- Your local Dri-Eaz distributor**
 - » Many Dri-Eaz distributors are Authorized Service Centers, which means they are certified by Dri-Eaz to do repairs. To locate a Distributor or an Authorized Service Center, visit www.dri-eaz.com or call 800-932-3030. When you call your distributor, have your equipment model, serial number, and proof of purchase handy. Your distributor will also help you obtain a Return Materials Authorization (RMA).
- The Dri-Eaz Service Department**
 - » If you and your distributor decide a return is the best option, send your equipment to us along with a Return Materials Authorization (RMA). The RMA helps us to efficiently track your equipment as it is being serviced and minimizes turnaround time.

MOISTURE DETECTION INSTRUMENTS



Reliable information for better drying

Accurate moisture detection instruments help you make informed decisions about the restorative drying process. In fact, knowing exactly where the moisture is and how much is critical for determining which techniques, equipment and procedures will be most effective. Dri-Eaz is proud to partner with Pro-timeter and Delmhorst Instrument Co. to provide the rugged, restoration-ready instruments you need to assess moisture content quickly and precisely.



All Delmhorst meters feature:

- » Rugged construction that ensures years of reliable use
- » Sturdy shock-resistant plastic carrying case
- » 9V battery
- » 1 year no-hassle warranty
- » Plus, Delmhorst's team of knowledgeable, accessible technicians are standing by, ready to offer technical assistance. And if service is ever needed, Delmhorst offers quick turnaround to get you back to work quickly.

DELMHORST
INSTRUMENT CO.
WHEN ACCURACY IS THE POINT.™



PROUDLY BUILT IN USA

1 QUICKNAV

Developed exclusively for Dri-Eaz, the fast-acclimating easy-to-use QuickNav incorporates a pin mode, a scan mode, and a thermohygrometer in a single handheld unit with 4 restoration electrodes included.

ITEM #F471
\$1,130 SUGG. LIST (US)

2 BD-2100

Versatility in a compact package

Equipped with pin-type sensors, the BD-2100 can be used to measure moisture in wood, drywall and non-wood materials.

ITEM #F463
\$450 SUGG. LIST (US)

3 HT-4000

The HT-4000 is Delmhorst's premier thermohygrometer – perfect for restoration contractors who need a fast, accurate tool for atmospheric measurements. Use with a moisture meter during the drying process and sign off the job with confidence. Detachable RH sensor allows for concrete testing.

ITEM #F472
\$525 SUGG. LIST (US)

4 TECHCHECK PLUS PACKAGE

Provides handy dual-mode moisture measurements at an economical price. Includes 21-E insulation electrode, extra contact pins for the meter, and carrying case.

ITEM #F465
\$540 SUGG. LIST (US)

5 HT-3000

The HT-3000 accurately measures humidity and temperature and instantly calculates grains per pound and dewpoint.

ITEM #F464
\$320 SUGG. LIST (US)

6 NAVIGATOR PRO RESTORATION PACKAGE

Includes everything the professional restorer needs to detect, evaluate and monitor moisture. Kit includes the Navigator Pro meter, three types of electrodes, Delmhorst's PC/KIT software application program, connecting cable and the carrying case – perfect for the restoration contractor.

ITEM #F462
\$1430 SUGG. LIST (US)



Scan QR code with device to see detailed Delmhorst specs and additional product offerings

Dri-Eaz also offers Delmhorst hammer probes and baseboard probes as well as a full array of replacement pins, sensors and fittings.

The Protimeter product line

Protimeter moisture meters offer the simplicity, flexibility, and durability you need to successfully measure and monitor moisture on every restoration job.

- » Durable, restoration-ready housings and components
- » Fast and accurate readings
- » Two year no-hassle warranty
- » 48 hr turnaround on service
- » On-line training videos available
- » **PROVEN HISTORY - Surveymaster is one of the world's bestselling dual function moisture meters**



Scan QR code with device to see detailed GE Protimeter specs and additional product offerings

A **PROTIMITER MMS2** *New!*

Detect humidity, temperature, and moisture levels using intuitive full-color user interface. Offers three different detection technologies, plus non-contact IR temperature measurement.

ITEM #F488 \$1,090 SUGG. LIST (US)

B **MMS2 RESTORATION KIT**

Includes the Hammer Electrode and pins, short Quikstick ST, HD MC probe, deep wall probes, cal check, and data download cable, software and instructions for data point logging, all packed in a rugged carry case.

ITEM #F489 \$1,399 SUGG. LIST (US)

C **RESTORATION KIT CASE**

Rugged ABS plastic case with pre-fitted foam inserts. Organizes and protects your valuable equipment.

ITEM #F359
\$149 SUGG. LIST (US)

DRI-EAZ HYDROSENSOR® I & II

Save your knees and back

Quickly map the migration of moisture in carpet and pad. Both models feature rugged stainless steel tubing and retractable points with a 31 in. reach. HydroSensor II includes a telescoping handle that collapses to 21 in. for easy toolbox storage.

M **HYDROSENSOR I**
ITEM #F245
\$185 SUGG. LIST (US)

N **HYDROSENSOR II**
ITEM #F251
\$215 SUGG. LIST (US)



D **PROTIMITER SURVEYMASTER** *New!*

Provides pin and pinless measurements. Use to distinguish sub-surface from surface moisture and zero in on problem areas. Color-coded LCD and LED display. Also works with Hammer Probe (G).

ITEM #F522 \$605 SUGG. LIST (US)

E **PROTIMITER TECHNICIAN'S KIT**

Get the Psychclone (H), Surveymaster (I) and Hammer Probe (J) together in a durable ABS case. Equips the technician with everything required to read ambient conditions and measure moisture content of materials.

ITEM #F524 \$1,129 SUGG. LIST (US)

F **PROTIMITER PSYCLONE**

Efficiently thermo-hygrometer calculates GPP, relative humidity, temperature, dew point and more – reduces error and saves time.

ITEM #F381 \$515 SUGG. LIST (US)

G **PROTIMITER HAMMER PROBE**

Determine moisture content in subfloors, frame materials and drywall. Penetrate easily up to a depth of 1.38 in. (35 mm). Stainless steel shaft, back stop and base, and built-in wrench for easy pin replacement.

ITEM #F309 \$245 SUGG. LIST (US)

H **PROTIMITER AQUANT** *New!*

Ideal for quick non-invasive detection of moisture up to 1 in. below surfaces, including hard surfaces such as vinyl and tile.

ITEM #F523 \$375 SUGG. LIST (US)

I **PROTIMITER QUIKSTICK™**

Improved sensor designed to enhance the performance of MMS Plus (F337) and MMS2 (F488/489) models. Note: Compatible with certain meters only. Visit the QuikStick product page in the Instruments section at www.dri-eaz.com.

ITEM #F394 \$165 SUGG. LIST (US)

J **PROTIMITER SHORT QUIKSTICK™ ST**

Use this convenient short, fast-response humidity sensor with the Protimeter MMS2 (F488). Provides quick, reliable temperature and relative humidity readings. Compatible with the MMS Plus (F337) back to v3.15.

ITEM #F528 \$125 SUGG. LIST (US)

K **Drifi™ REMOTE MONITORING GATEWAY** *New!*

Collect and document conditions wirelessly from Dri-Eaz LGR 2800i and 3500i dehumidifiers and use sensors and sensor extension kits (sold separately) to collect data in the jobsite drying environment

Complete details at drifi.dri-eaz.com

L **Drifi™ SENSOR PACK**

Pack of five wireless sensors for use with Drifi Gateway to collect ambient and structural moisture and temperature data. (Batteries not included.)

Complete details at drifi.dri-eaz.com

O **DRI-EAZ DIGITAL PSYCHROMETRIC CALCULATOR**

Take the guesswork out of finding GPP, thirst, dew point and more. Includes seven calculations unique to restoration. Also includes equipment usage calculations and C° or F° options.

ITEM #F267 (BOX OF 5) \$220 SUGG. LIST (US)



DRI-EAZ GPP CALCULATOR APP



Scan QR code to download GPP calculator to your iPhone or Android device

FREE!



**Restoration Sciences
ACADEMY**

PUTTING SCIENCE TO WORK

Want to learn proven, science-based approaches to water or fire damage restoration or odor control and microbial remediation? Need to learn from experts how to ensure your success on all carpet cleaning jobs? You need Restoration Sciences Academy. RSA provides real-world training in dynamic hands-on learning environments. Taught by cleaning and restoration experts, RSA courses help you understand and apply proven techniques that help you work more efficiently and grow your business.

THE RSA DIFFERENCE

- » **RSA teaches more courses and students in more locations** than any other entity in the industry
- » **RSA employs the most respected and experienced instructors** in the industry
- » **RSA has the only fully peer-reviewed curriculum** in the industry,
- professionally edited, designed and printed class workbooks— of lasting value to your company's training library
- » **RSA can deliver standard or customized courses at your facility based on your needs**
- » **RSA offers free technical support** to your organization and to all alumni

CURRENT RESTORATION SCIENCES ACADEMY COURSES

Restorative Drying 101 (WRT) 3 DAYS/2 CECs (IICRC)

Essential introduction to water damage restoration. (Certification: IICRC Water Restoration Technician)

Restorative Drying 201 (ASD) 4 DAYS/2 CECs (IICRC)

In-depth study of the science of drying and real-world hands-on practice and application with drying a structure. Full course manual provided, plus marketing and business support tools. (Certification: IICRC Applied Structural Drying. Prerequisite: WRT)

Restorative Drying 101/201 Combined (WRT/ASD) 5 DAYS/2 CEC (IICRC)

Combines the complete Water Restoration Technician and Applied Structural Drying courses into a single 5-day program.

Restorative Drying 301 1 DAY/1 CEC (IICRC)

Comprehensive look at advanced structural drying concepts and new drying technologies and processes.

Fire and Smoke Restoration 151 (FSRT) 2 DAYS/2 CECs (IICRC)

Thorough coverage of smoke odor removal, structure cleaning, surface preparation and finishing and contents cleaning. (Certification: IICRC Fire and Smoke Restoration Technician)

Odor Control Technician 111 (OCT) 1 DAY/1 CEC (IICRC)

Overview of odor sources, detection processes, equipment, chemical options and applications, including proper odor removal techniques for common problems. (Certification: IICRC Odor Control Technician)

Carpet Cleaning Technician 130 (CCT) 2 DAYS/2 CECs (IICRC)

Fundamentals of carpet cleaning, including the 5 methods most often used in carpet cleaning. Also includes analysis of fiber types, carpet construction and mill dyeing, soil characteristics and the chemistry of cleaning. (Certification: IICRC Carpet Cleaning Technician)

Microbial Remediation 110 3 DAYS/2 CECs (IICRC)/RSA CERTIFICATION

MR-110 is an introductory course in mold and sewage remediation, incorporating hands-on training by an IICRC-certified Master Restorer. Attendees will acquire the necessary skills and knowledge required to work as technicians on projects involving mold and sewage remediation.

Microbial Remediation 210 4 DAYS/2 CECs (IICRC)/RSA CERTIFICATION

MR-210 is a comprehensive course in mold and sewage remediation, incorporating hands-on training by an IICRC-certified Master Restorer. Attendees will acquire the necessary skills and knowledge required to manage projects involving mold and sewage remediation. This course covers the required material and is preparatory for taking these **ACAC** exams: CMR & CMRS and the IICRC MRS Exam..

RESTORATION SCIENCES ACADEMY CAMPUSES

● **RSA NORTHWEST CAMPUS**
— Claude Blackburn Education Center
Burlington, Washington

● **RSA SOUTHEAST CAMPUS**
— James C. Meyers Education Center
Nashville, Tennessee

New!

ESTIMATING 280 **BASIC AND INTERMEDIATE, HANDS ON** 3 DAYS/2 CECs (IICRC)

Acquire the knowledge and practical skills necessary to quickly create accurate estimates using a variety of Xactimate® tools. Class is available as a hands on, dynamic learning event, held during a live water loss! Students completing this program will be prepared to challenge the **Xactimate Level 1 and 2** user certification exams offered through Xactware.

TRAUMA CLEANUP 211 2 DAYS/2 CECs (IICRC)/RSA CERTIFICATION

Learn industry best practices for efficient restoration of structures and contents after a trauma event. Program covers technical processes, psychological issues and regulatory requirements related to performing trauma work. Participants will conclude the program with a step-by-step case study to reinforce key objectives. Examination and certification available through the RSA.

RSA ONLINE TRAINING

CAN'T GET TO A CLASSROOM? Access the latest information in cleaning, restoration and business issues on RSA ONLINE! Visit www.rsa-hq.com for more.

For current RSA course schedules, locations, and easy registration, visit **WWW.RSA-HQ.COM**



OR SCAN TO SEE OUR CURRENT COURSE LIST

RSA can also customize courses to specifically address your company's needs. Call RSA at 800-932-3030 for more info.

Online training.

On time. On budget. On target.

Certification and Continuing Education Credits (CECs) also available!



RSA: THE RESTORATION TRAINING LEADER

Restoration Sciences Academy Online delivers instant access to the highest quality restoration training anytime, anywhere. Complete courses, test your knowledge, train new staff members and review completed courses at your convenience, 24/7.

- » Easy access, low-cost training for new staff
- » Available when you need it 24/7
- » Boost your effectiveness and profitability
- » Learn the latest techniques, tools and industry standards



CURRENT COURSES

- » Drying Equipment Essentials
- » Water Extraction Essentials
- » Introduction to Fire & Smoke Restoration (free)
- » Introduction to Microbial Remediation (free)
- » Introduction to Restorative Drying (free)
- » Rug Pre-Cleaning Inspection
- » Introduction to Legal Loss Issues (free)
- » Legal Issues: Contracts and Documentation
- » Legal Issues: Collections

COMING SOON!

- » Carpet Cleaning
- » The Science of Drying
- » Odor Control
- » Strategies for Business, Sales and Marketing



The mobile moisture mapping tool designed by the industry's foremost documentation experts

Dri-Plan™ Mobile App

Moisture-mapping mobile app tracks jobs, drying conditions, inventory and billing

The new Dri-Eaz Dri-Plan for iPad is the only documentation app built around a customizable moisture map. With just a few finger swipes you can sketch each room in the project, plot moisture migration, equipment used, and services provided. Then sync your data up to your Dri-Plan web account for review, reporting, billing, and archiving.

- » **SIMPLE:** As easy as drawing on paper
- » **PROFESSIONAL:** Custom branded, complete documentation
- » **AFFORDABLE:** As low as \$21 a month per user

COMING SOON-

Full integration with:

XACTWARE.



Dri-Plan is the most comprehensive, convenient documentation tool ever!

dri-plan.com/product/

Sync up your data to your Dri-Plan web account for review, billing, and archiving.



FOR IPADS ONLY



CHEMSPEC

PRORESTORE



WWW.DRI-EAZ.COM



It only takes **FIVE** minutes...

FIND OUT HOW LEGEND REWARDS CAN **BENEFIT YOUR BUSINESS!**

OVER 7500 PARTICIPANTS.
115 MILLION POINTS ISSUED.
70 MILLION POINTS REDEEMED.
1000S OF CUSTOMER REWARDS.



What can *you* get?

Other manufacturers reward distributors, but Legend Brands **REWARDS YOU.**

Join the hundreds of Legend Brands customers who are enjoying rewards for the Dri-Eaz, Sapphire Scientific, and ProRestore products they purchase.



HERE'S HOW THE **LEGEND REWARDS** PROGRAM WORKS:

1. Just watch for Legend Rewards certificates in the product boxes for Dri-Eaz, ProRestore, and Sapphire.
2. Go online to LegendRewards.com and register.
3. Enter your certificate serial numbers and start accumulating points!
4. **REWARD YOURSELF!**
Redeem rewards starting for as low as 500 points.

Scan this link and get registered today.



PRORESTORE



SapphireSCIENTIFIC

LegendRewards.com