



Sedona



Arctic Elite™



## Sightgard® Protective Eyewear

In today's Protective Eyewear market, MSA is committed to providing the latest eyewear styles. We are pleased to announce the expansion of our Sightgard Line of Protective Eyewear to include several new styles: the Sedona, Pyrenees, Alpine and our Arctic Elites. All models are available through MSA now!! We have also expanded our product line with a complete line of accessories, including pre-moistened towelettes, disposable cleaning stations, lanyards, and display units.



*Pictured Pre-Moistened Towelettes, 4 oz. Fog Proof*

Sightgard Industrial Protective Eyewear is designed for protection against impact hazards and/or flying particles, dust, sparks, and glare. Sightgard Industrial Protective Eyewear provides excellent side-and front-impact protection, yet is comfortable to wear all day. All MSA Protective Eyewear regardless of lens shade provides a minimum of 99.9% protection against harmful UV radiation. Some models (UV-400) offer additional protection.

### Approvals

All Sightgard Industrial Protective Eyewear complies with all applicable test requirements of ANSI Z87.1-2003. Some select models also meet CSA Z94.3.



# The Sightgard® Line of Protective Eyewear

Sightgard Industrial Protective Eyewear is designed for protection against impact hazards and/or flying particles, dust, sparks, and glare. Sightgard Industrial Protective Eyewear provides excellent side- and front-impact protection while still being comfortable to wear. For more information, see Bulletin 0305-22-MC.

## Approvals

All Sightgard Industrial Protective Eyewear meets ANSI Z87.1 – high impact.

Spectacles with \* also meet CSA Z94.3.



## Sedona™ Protective Eyewear



- Vertical & horizontal temple adjustments
- Padded brow guard
- Soft flexible nose pad
- Anti-fog lens
- Available in clear, gray and indoor/outdoor lens
- All frames are translucent gray

Sedona, clear, A/F lens	10049252
Sedona, gray, A/F lens	10049254
Sedona, I/O lens	10049255
Sedona, clear lens	10049251
Sedona, gray lens	10049253

## Pyrenees™ Protective Eyewear



- Dual injection soft tip temples
- Available in several frame and lens colors
- Full side protection

Pyrenees, black frame, clear lens*	10033716
Pyrenees, black frame, gray lens*	10033717
Pyrenees, black frame, amber lens, AF*	10033740
Pyrenees, black frame, clear lens AF*	10033718
Pyrenees, black frame, gray lens, AF*	10033719
Pyrenees, gray- translucent frame, indoor-outdoor lens*	10033741



*Belt loop-style pouch to protect your eyewear*

Pouch only, Pyrenees, black	10034946
-----------------------------	----------

## Arctic™ Elite Protective Eyewear



- Soft tip temples
- Padded nose bridge
- Lightweight
- A notch above the standard Arctics

Arctic Elite, clear, AF	10038845
Arctic Elite, gray, AF	10038846
Arctic Elite, light gold indoor/outdoor lens	10059671

## Alpine™ Protective Eyewear



- Lightweight
- 8 base curved lens
- Comfortable to wear
- Available in clear, gray, amber and indoor/outdoor lens
- A/F or Non Anti-fog lens available

Alpine, clear lens	10041818
Alpine, clear A/F	10041819
Alpine, gray lens	10041820
Alpine, light gold indoor/outdoor lens	10041823



## Aurora™ Protective Eyewear



- 9-base curved lens
- Spring-comfort adjustable nose bridge
- Soft-end temples
- Vertical temple adjustment
- Anti-fog replaceable lens (blue mirror, hard coat lens only)



Belt loop-style pouch to protect your eyewear

### Aurora Eyewear with Black Frame

Clear anti-fog lens	10026005
Gray anti-fog lens	10026006
Amber anti-fog lens	10026007
Blue mirror anti-fog lens	10026008

### Aurora Accessories

Pouch only, Aurora, black	10034943
---------------------------	----------

## Tradewind™ Protective Eyewear



- Indoor-outdoor light gold or clear lens
- Tuff-Stuff™ scratch-resistant lens coating
- Adjustable temples and integrated side shields
- Brow protection
- UV-400 protection (mirrored lens only)

Tradewind, two-tone temple, light gold lens	697506
Tradewind, all black temples, clear lens	10002545

## Sierra™ Protective Eyewear



- Full eye protection
- Integrated side shields
- Anti-fog lens (on some models)
- Vented brow guard
- Tuff-Stuff™ scratch-resistant lens coating
- Adjustable temples
- Teal green, black, blue or red/white/blue nylon frame
- Clear, gray, indoor/outdoor light gold mirror, or amber lens available
- Small faces size available (see right)

### Sierra Eyewear with Teal Frame

Clear anti-fog lens*	697505
----------------------	--------

### Sierra Eyewear with Black Frame

Clear lens	697550
Gray lens*	10010570
Gray anti-fog lens*	10010572
Light gold mirrored lens	10018663
Clear anti-fog lens lens*	10018662

### Sierra Eyewear with Blue Frame

Clear lens	10023610
Amber lens	10023611
Gray lens	10023612

### Sierra Eyewear with Red/White/Blue Frame

Clear lens	10012842
Clear anti-fog lens	10012843
Gray lens	10012844
Gray anti-fog lens	10012845

## Sierra™ Small Faces Protective Eyewear



- Suitable for small adult faces and for children
- Tuff-Stuff™ anti-scratch lens coating
- Adjustable temples
- High optical quality

Sierra, small faces, clear lens	10018440
---------------------------------	----------

## Rx Overglasses



- Royal blue horizontal and vertical adjustable temples
- Gray or clear anti-fog lens
- Wide-angle viewing w/o distortion
- Limited lens curvature for the best optics
- Tuff-Stuff™ anti-scratch lens coating
- Fit over most prescription eyewear

Rx Overglasses, blue frame w/gray anti-fog lens	10012855
Rx Overglasses, clear anti-fog lens	10008175

## Arctic™ Protective Eyewear



- Stylish cat's eye look
- Built-in side impact
- Tuff-Stuff™ anti-scratch lens coating
- Available with clear protection or gray-tinted lens/frame

Arctic, clear lens	697514
Arctic, gray lens	697515
Arctic, blue-mirrored lens	10008179

## Clearview™ Protective Eyewear



- Fit over many prescription glasses
- Integrated side shields
- Clear or Shade 5 lens (Shade 5 lens designed for welding and brazing applications where Shade 5 protection is recommended)
- Same as Plant Visitor specs except with Tuff-Stuff™ anti-scratch lenscoating

Clearview, clear lens	697502
Clearview, black temples, shade #5 lens	10012847

## Heritage™ Protective Eyewear



- Propionate frame
- Very comfortable
- Double lens traditional look
- Integral side shields
- Brow protection

Heritage, clear lens	697511
----------------------	--------

## Luxor™ Protective Eyewear



- Tuff-Stuff™ scratch-resistant lens
- Black temples
- Soft nose pads
- Clear or gray-tinted lens
- One-piece wrap protection
- Adjustable temples
- Frameless design

Luxor, clear lens	697516
Luxor, gray lens	697517

## Plant Visitor Protective Eyewear



- Fit over many prescription glasses
- Most economical model
- Integrated side shields
- Clear lens
- Boxes of 10 in dispenser-style container or bulk pack of 144

Plant Visitor, clear lens, box of 10*	697500
Plant Visitor, clear, bulk box of 144*	10008174

## Impression™ II Protective Eyewear



- Vertical and horizontal temple adjustments
- Extended cheek and brow protection
- Platinum colored temples
- Gray and clear anti-fog lens

Impression, clear anti-fog lens	10008177
Impression, gray anti-fog lens	10008178

## Eyewear Display Unit

- Revolving
- High-quality ball-bearing design
- Holds 24 pairs of eyewear
- Includes mirror and promotion holder



Revolving Eyewear Display Unit, less glasses	697518
--	--------

## Eye and Face Protection Accessories

### Eyewear Lanyards



Top: Deluxe Lanyard Bottom: Standard Lanyard

Standard Eyewear Lanyard, black (pack of 12)	10020872
Deluxe Eyewear Lanyard, black (pack of 12)	10020871

- Holds eyewear securely
- Use to rest eyewear on chest when not in use
- Standard model clips into holes in eyewear temple ends
- Deluxe model goes over temple ends

### Eyewear Cleaning Accessories



Pre-Moistened Towelettes (box of 100)	10022087
4 oz. Fogpruf™ Cleaner Refill	13016

## NFL Safety Glasses

**NEW!**

- For use at work, home or at the game.
- Rubber-tipped ratcheting temples for a comfortable custom fit.
- Anti-fog, scratch-resistant lens.
- Recloseable plastic box protects product during storage.

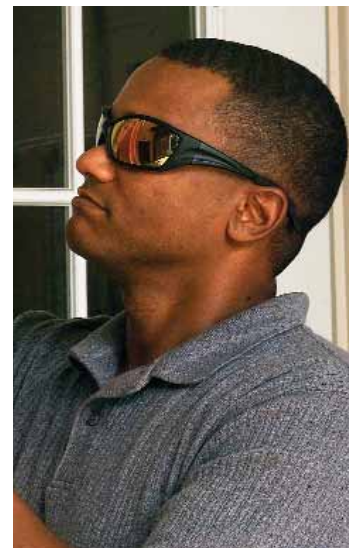


Chicago Bears	10036660
Dallas Cowboys	10036663
Green Bay Packers	10036666
Miami Dolphins	10036671
New England Patriots	10036673
New York Giants	10036675
Oakland Raiders	10036677
Pittsburgh Steelers	10036679

## Sports Series Safety Glasses

**NEW!**

- A whole new generation of eye protection, from the safety leader.
- Meet new ANSI Z87.1 2003 standards for High Impact protective eyewear (marked Z87+).
- Mirrored lenses feature 7 layers of silicon and titanium dioxide for consistent light blockage.
- Vented brow area for excellent air movement across the lens for improved user comfort.
- Rubber-tipped straight temples retain the glasses securely on the face, even when bending over.
- Features fashion forward styling not found in conventional safety glasses.



Pro 2 Ruby Red Mirrored lens with painted black frame	10048403
Pro 2 Ocean Blue Mirrored lens with painted silver frame	10048404
Pro 2 Crystal Clear anti-fog lens with clear translucent frame	10048405
Pro 2 Smooth Gray anti-fog lens w/ translucent dark gray frame	10048406

## Protective Eyewear for Emergency Services



Fire Service or EMS logo available on all models of Aurora and Pyrenees Eyewear

### Pyrenees Eyewear

- Dual injection soft tip temples
- Full side protection
- Translucent gray frames
- Dual lens design
- Available in various lens shades

### Aurora Eyewear

- Offers complete wrap-around protection
- Available in clear, gray, and amber anti-fog replaceable lenses
- Soft tip straight back temples with vertical ratchet adjustment
- New "Easy-Fit" adjustable nose bridge
- Combines safety with style



	Clear Anti Fog Lens	Gray Anti Fog Lens	Amber Anti Fog Lens
Fire Service Pyrenees	10034933	10034934	10034935
EMS Pyrenees	10034936	10034937	10034938
Fire Service Aurora	10030410	10030411	10030412
EMS Aurora	10030413	10030414	10030415

# Sightgard® Single Lens Goggles

## Softframe Single Lens Goggles



Softframe Perforated Single Lens Goggles



Softframe 4-Vent Single Lens Goggles

Softframe Goggles effectively fit most facial contours. Large, one-piece, .060-inch-thick polycarbonate lens provides wide, undistorted field of vision. Optional Anti-Fog Coated Lenses are available for work involving high humidity, temperature changes or greater worker exertion. The scratch-resistant coating is unaffected by most organic solvents, ammoniacal and alkaline detergents.

### Approvals

Softframe, Clearvue, Respirator, and Rubber Frame Goggles by MSA meet all applicable requirements of ANSI Z87.1 2003 – high impact (except Wire Screen Goggles).

## Respirator Goggles



Softframe 4-vent Respirator Goggles by MSA are specially constructed to wear with MSA respirators and have a .060-inch-thick anti-fog clear lens.

## Wire-Screen Goggles



Wire Screen Goggles feature a clear nonvented frame, wire lens, and elastic headband.

## Sightgard Single Lens Goggles

Type	Frame Color	Frame Style	Lens Type	Headband	P/N	Z87
Softframe	Clear	Perforated	Standard	Elastic	695847	High Impact
Softframe	Clear	Perforated	Anti-Fog	Elastic	695850	High Impact
Softframe	Clear	4-Vent	Standard	Elastic	695848	High Impact
Softframe	Clear	4-Vent	Anti-Fog	Elastic	695851	High Impact
Softframe	Clear	Nonvented	Anti-Fog	Elastic	695852	High Impact
Wire Screen	N/A	Nonvented	Wire	Elastic	695932	High Impact
Respirator	Clear	4-Vent	Anti-Fog	Elastic	461027	High Impact
Rubber Frame	Clear	4-Vent	Acetate Standard	Rubber	791072	High Impact
Clearvue 200	Clear	Indirect Vent	Anti-Fog	Elastic	696776	High Impact

## Clearvue® 200 Goggles



These goggles feature an integrated-frame design and a flexible, rolled-in cushion at the temples which provides comfort without tension or pressure points.

## Rubber Frame Goggles



For use where fine dust in high-velocity concentration is a problem and where minor impact hazards exist.

## Goggle Retainers



Sturdy neoprene-rubber accessory can be used with any protective cap or hat. Retains goggle on headwear when not in use and holds goggle securely when worn for eye protection.

Goggle Retainer only, for Protective Caps 459458

Goggle Retainer only, for Protective Hats 449895

**Note:** This Bulletin contains only a general description of the products shown. While uses and performance capabilities are described, under no circumstances shall the products be used by untrained or unqualified individuals and not until the product instructions including any warnings or cautions provided have been thoroughly read and understood. Only they contain the complete and detailed information concerning proper use and care of these products.



ID 0305-22-MC /Dec 2004  
© MSA 2004 Printed in U.S.A.

**Corporate Headquarters**  
P.O. Box 426, Pittsburgh, PA 15230 USA  
Phone 412-967-3000  
[www.MSAnet.com](http://www.MSAnet.com)

**U.S. Customer Service Center**  
Phone 1-800-MSA-2222  
Fax 1-800-967-0398

**MSA Canada**  
Phone 1-800-MSA-2222  
Fax 905-238-4151

**MSA Mexico**  
Phone 52-55 21 22 5770  
Fax 52-55 5359 4330

**MSA International**  
Phone 412-967-3354  
Fax 412-967-3451

**Offices and representatives worldwide**  
For further information:

