

Belt-Mounted Powered Air Purifying Respirator (PAPR) GVP-Series

Issue Date 1/22/2010

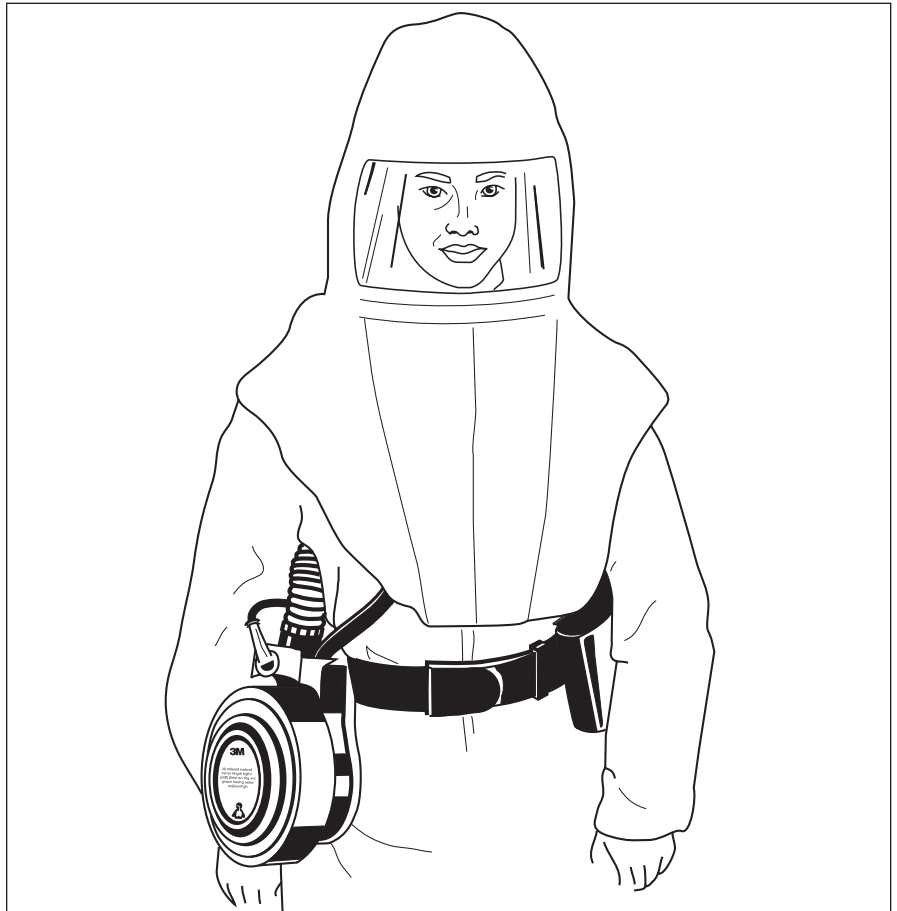
The 3M™ Belt-Mounted Powered Air Purifying Respirator (PAPR) GVP-Series offers exceptional performance and versatility.

This innovative design is able to operate with up to six different helmets, hoods and facepieces:

- L-Series General Purpose Headgear
- L-Series and L-SG Series Welding Headgear
- H-Series Hoods
- S-Series Hoods
- 7800S Full Facepiece Respirator
- 6000 DIN Full Facepiece Respirator

Applications

- Petrochemical
- Chlorine
- Lead and copper smelting
- Asbestos and lead abatement
- Paint spray/pesticides
- Pigment manufacturing
- Pharmaceutical
- Hazardous waste
- Foundry
- Nuclear
- Aluminum
- Grain processing
- Welding



The 3M™ Powered Air Purifying Respirator (PAPR) with 3M™ S-Series Hood

Features & Benefits

- High levels of airflow surpass NIOSH requirements, meaning additional comfort for the worker.
- Single replaceable cartridge system is more cost effective, allowing for easy replacement, lower changeout costs and reduced stocking requirements.
- Long-life motor.
- Available with intrinsically safe NiCd or fast charging NiMH batteries.
- Batteries provides eight hours of service per charge. A light indicates when the battery needs charging.
- Optional comfort belt offers easier assembly of PAPR components. This belt simplifies removal of components for cleaning and battery charging. One size fits most. (Adjustable 26" to 54")

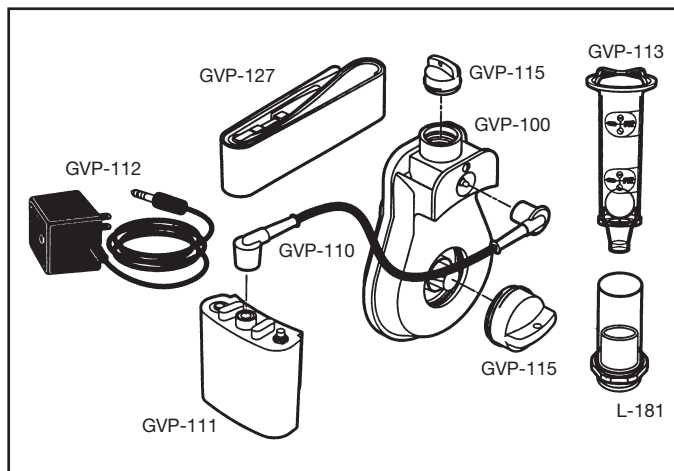
3M™ Belt-Mounted Powered Air Purifying Respirator (PAPR) GVP-Series

PAPR Systems*

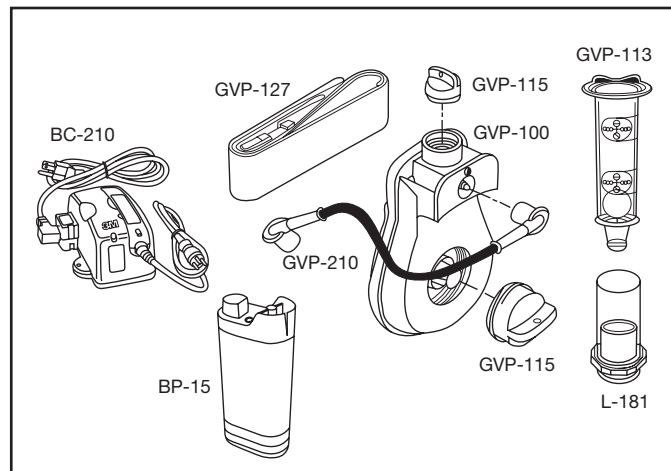
Code	Systems	Includes
GVP-1	Belt-Mounted PAPR Assembly	Motor blower GVP-100, web belt GVP-127, battery GVP-111, charger GVP-112, flow meter GVP-113, power cord GVP-110, blower plugs GVP-115
GVP-1NiMH	Belt-Mounted PAPR Assembly	Same as GVP-1 except BP-15 NiMH battery, BC-210 charger and GVP-210 power cord instead of GVP-111 NiCd battery, GVP-112 charger and GVP-110 power cord
GVP-CB	Belt-Mounted PAPR Assembly	Same as GVP-1 except comfort belt CB-1000 instead of web belt GVP-127
GVP-CBNiMH	Belt-Mounted PAPR Assembly	Same as GVP-1NiMH except comfort belt CB-1000 instead of web belt GVP-127
GVP-1U	Belt-Mounted PAPR Assembly	Same as GVP-1 except urethane coated belt GVP-117 instead of web belt GVP-127
GVP-1U NiMH	Belt-Mounted PAPR Assembly	Same as GVP-1NiMH except urethane coated belt GVP-117 instead of web belt GVP-127

*To complete a PAPR system, it is necessary to order appropriate headgear, breathing tube and cartridges/filters.

GVP-1 PAPR Replacement Parts



GVP-1NiMH PAPR Replacement Parts



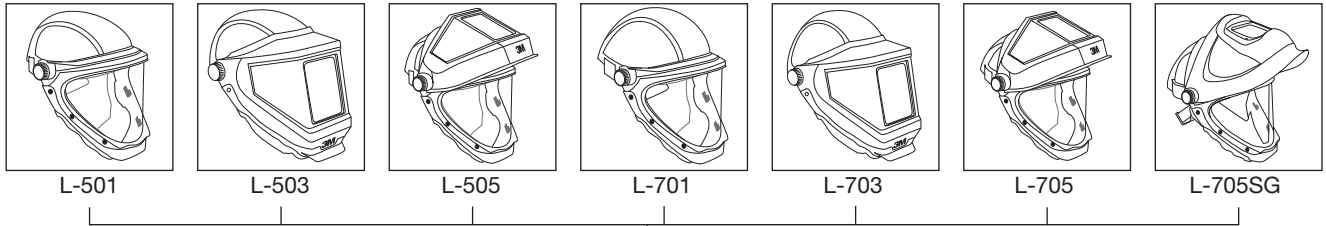
PAPR Replacement Parts

BP-15	NiMH battery	GVP-120	PAPR Cover
BC-210	NiMH battery charger	GVP-122	Breathing tube (H-Series Hoods)
CB-1000	Comfort belt (adjustable from 26" to 54")	GVP-123	Breathing tube (GX00 DIN half facepiece and 7800S full facepiece respirators)
GVP-100	Motor blower unit (with plugs)	GVP-127	Web belt
GVP-101	Motor blower gaskets (5 inlet, 5 outlet)	GVP-128	Web shoulder strap
GVP-110	Power cord	GVP-210	NiMH Battery Power Cord
GVP-111	Battery pack	H-115	Breathing tube assembly (H-Series)
GVP-112	Battery charger	H-116	Replacement breathing tube (H-Series)
GVP-113	Flow meter	L-122	Breathing tube (L-Series and L-SG Series)
GVP-114	Flow cover (box of 10)	L-181	Flow meter adapter
GVP-115	Blower plug (5 motor blower plugs, 5 air outlet plugs)	BT-20	Breathing tube (S-Series Hoods)
GVP-116	Filter plug (box of 10)	V-199	Adapter for BT-20 breathing tubes
GVP-117	Urethane belt		
GVP-118	Urethane shoulder strap		
GVP-119	Shower Cover (5/pk.)		

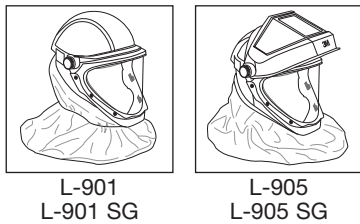
3M™ Belt-Mounted Powered Air Purifying Respirator (PAPR) GVP-Series, Intrinsically Safe NiCd Battery

Choose Headgear

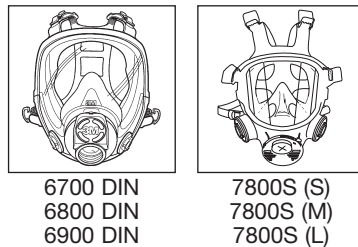
Loose-Fitting Headgear



Helmets



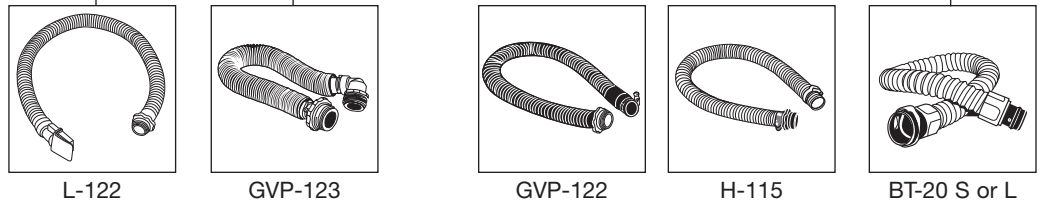
Facepieces



Hoods



Choose Breathing Tube

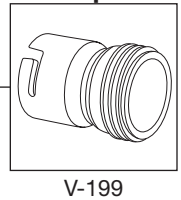


Choose GVP Belt-Mounted System

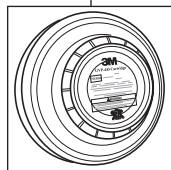
GVP-110 Power Cord	GVP-100 Motor Blower	GVP-111 Battery Pack
GVP-127 Waist Belt	GVP-112 Battery Charger	GVP-113 Flow Meter

Note: GVP-1 includes all components shown.

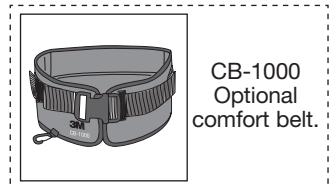
Adapter



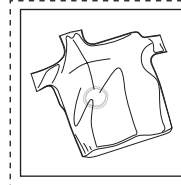
Choose Filters and/or Cartridges



- GVP-401: Organic Vapor Cartridge
- GVP-402: Acid Gas Cartridge
- GVP-403: Organic Vapor, Acid Gas Cartridge
- GVP-404: Ammonia Cartridge
- GVP-405: Formaldehyde Cartridge
- GVP-440: HEPA Filter
- GVP-441: Organic Vapor/HEPA Cartridge
- GVP-442: Acid Gas/HEPA Cartridge
- GVP-443: Organic Vapor, Acid Gas/HEPA Cartridge
- GVP-444: Ammonia/HEPA Cartridge
- GVP-445: Formaldehyde/HEPA Cartridge



CB-1000
Optional
comfort belt.

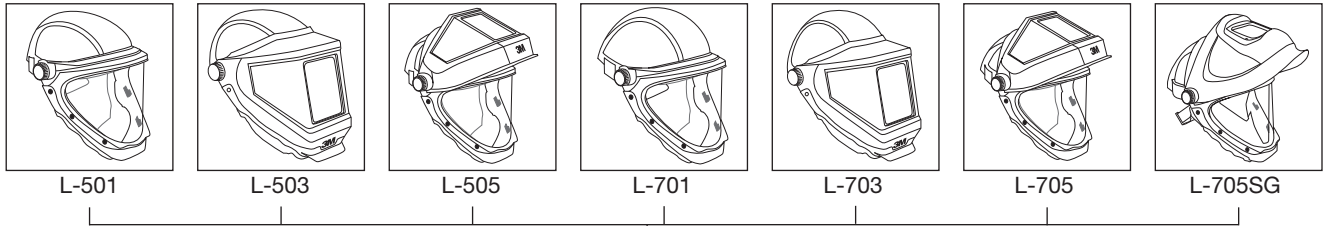


GVP-120
Optional
PAPR
Cover

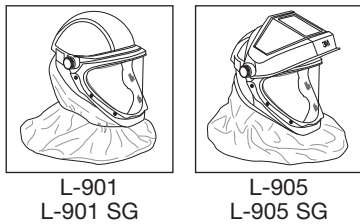
3M™ Belt-Mounted Powered Air Purifying Respirator (PAPR) GVP-Series, Non-Intrinsically Safe NiMh Battery

Choose Headgear

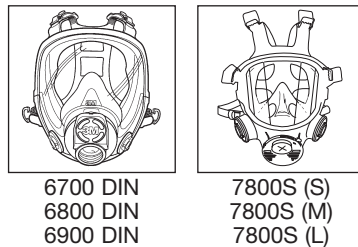
Loose-Fitting Headgear



Helmets



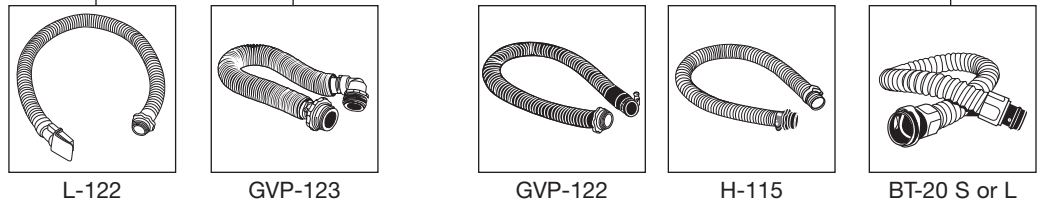
Facepieces



Hoods



Choose Breathing Tube

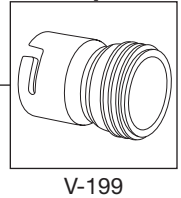


Choose GVP Belt-Mounted System

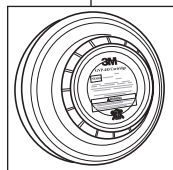
GVP-210 Power Cord	GVP-100 Motor Blower	BP-15 NiMH Battery
GVP-127 Waist Belt	BC-210 Battery Charger	GVP-113 Flow Meter

Note: GVP-1NiMH includes all components shown.

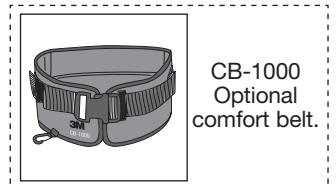
Adapter



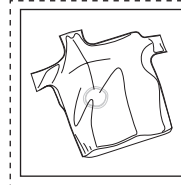
Choose Filters and/or Cartridges



- GVP-401: Organic Vapor Cartridge
- GVP-402: Acid Gas Cartridge
- GVP-403: Organic Vapor, Acid Gas Cartridge
- GVP-404: Ammonia Cartridge
- GVP-405: Formaldehyde Cartridge
- GVP-440: HEPA Filter
- GVP-441: Organic Vapor/HEPA Cartridge
- GVP-442: Acid Gas/HEPA Cartridge
- GVP-443: Organic Vapor, Acid Gas/HEPA Cartridge
- GVP-444: Ammonia/HEPA Cartridge
- GVP-445: Formaldehyde/HEPA Cartridge



CB-1000
Optional
comfort belt.



GVP-120
Optional
PAPR
Cover

3M™ Belt-Mounted Powered Air Purifying Respirator (PAPR) GVP-Series

Workers can choose from a wide selection of cartridges and filters that offer flexibility and freedom to work in a variety of industrial environments:

- GVP-401: Organic Vapor
- GVP-402: Acid Gas
- GVP-403: Organic Vapor/Acid Gas
- GVP-404: Ammonia
- GVP-405: Formaldehyde
- GVP-440: HEPA
- GVP-441: Organic Vapor/HEPA
- GVP-442: Acid Gas/HEPA
- GVP-443: Organic Vapor/Acid Gas/HEPA
- GVP-444: Ammonia/HEPA
- GVP-445: Formaldehyde/HEPA

PAPR Specifications

Airflow:

From 7.0 to 9.5 cfm (198 to 269 liters/min.) (depending on headgear and filter and/or cartridge)

Weight:

Motor Blower: 1.1 lb (.5 kg)
Battery: 2.5 lb (1.12 kg) NiCd
1.8 lb (0.83kg) NiMH

Battery:

Nickel cadmium, rechargeable
500–1,000 charge/discharge cycles. 8 hours service time.
20 hours initial charge, 14–16 hours after 8 hours use.

Nickel metal hydride, rechargeable,
400 charge/discharge cycles.
8 hours service time. 2 hours for 90% charge and 4 hours for full charge on a completely discharged battery.

Motor Life:

Up to 2,000 hours
(dependent on use conditions)

⚠ WARNING



These respirators help reduce exposure to certain airborne contaminants. **Misuse may result in sickness or death.** Before use, the wearer must read and understand *User Instructions* provided as a part of product packaging. Time use limitations may apply. Call 3M OH&ESD Technical Service at 1-800-243-4630. In Canada, call 1-800-267-4414.

Important

Before using these respirators, you must determine the following:

1. The type of contaminant(s) for which the respirator is being selected.
2. The concentration level of contaminant(s).
3. Whether the respirator can be properly fitted on the wearer's face*. All respirator instructions, warnings and use and time limitations must also be read and understood by the wearer before use.

Before use of these respirators, a written respiratory protection program must be implemented, meeting all the requirements of OSHA 29 CFR 1910.134, including training, medical evaluation and fit testing*.

*Loose-fitting respirators do not require fit testing.

For more information, please contact:

3M Occupational Health and Environmental Safety Division (OH&ESD)

In the U.S., contact:

Customer Service
1-800-328-1667

Technical Assistance
1-800-243-4630

Internet
www.3M.com/occsafety

For other 3M products
1-800-3M HELPS

In Canada, contact:

3M Canada Company, OH&ESD
P.O. Box 5757
London, Ontario N6A 4T1

Customer Service
1-800-265-1840

Technical Assistance (Canada only)
1-800-267-4414

Internet
www.3M.com/CA/occsafety

Technical Assistance In Mexico
01-800-712-0646
5270-2255, 5270-2119 (Mexico City only)

Technical Assistance In Brazil
0800-132333

3M Occupational Health and Environmental Safety Division

3M Center, Building 235-2W-70
St. Paul, MN 55144-1000