



Guns

Tips

Filters

Rollers

Hoses

Liquids

Manifolds

ThermControl™

Complete Source for Genuine Parts and Accessories

Contents

Aluminum Airless Gun	4-5
Stainless Steel Guns	6-7
Airless Tips	8-9
Tip Technology	10-11
Guards & Filters	12-13
Reach Tools	14-17
Rollers	18-19
Hoses	20-21
Liquids	22-23
Manifolds	24-25
Modular Manifolds	26
Hopper	26
ThermControl™	27
Further Accessories	28

Residential



Commercial



Fine Finish



Roofing



Why Titan Genuine Parts and Accessories?

ADVANCED PERFORMANCE

- TITAN airless accessories are designed BY professionals FOR professionals.
- Our accessories and equipment are built for hard work and long life.
- The latest engineering technology ensures ease of use and reliability.
- Our accessories and equipment meet and exceed the expectations of professionals who want to do the job right the FIRST time.

TOTAL RELIABILITY

- Proven technology - you finish every project quickly and profitably.
- Superior design and construction maximizes the service life of your accessories and equipment.
- Complete diversity – we have the right equipment for every project and sprayer application.
- Half a century of getting the job done right – TITAN is the name you trust.

UNSURPASSED SERVICE

- Dependable, reliable network of authorized sales and service distributors.
- The best customer service in the industry to help you select the right equipment and accessories.
- Professional application and service representatives ready to assist you with recommendations and technical support.

For the best, most professional results – use only genuine TITAN parts and accessories.

Airless Guns

TITAN is an industry leader in sprayer gun technology

Countless hours of research and development have been devoted to manufacturing a full line of the best quality TITAN airless guns for every application imaginable - from the thinnest lacquers to the heaviest textures and roof coatings.

- Designed to minimize hand fatigue
- Solid, safe construction
- Precision trigger for accurate delivery

Interior



Exterior



LX-80 Platinum Series

Gun Hose Tip Kit 584-050

- Unique two-piece seal assembly design allows removal of just the ball for easy maintenance.
- Ultra-light trigger pull & form fitting handle reduces hand fatigue.
- Reversible tungsten carbide seat offers twice the life of standard diffusers.
- All metal construction.
- Swivel reduces hose kinks.
- In-handle filter helps reduce tip clogs & increase tip life.
- Pressure rated at 250 Bar (3600 PSI).
- Includes 662-517 reversible tip.



LX-80" Airless Gun

Product No. 580-100A (4 Finger Trigger)

Product No. 581-085 (2 Finger Trigger)

4 Finger Gun Hose Tip Kit 580-050

2 Finger Gun Hose Tip Kit 581-150

- Available on 4 finger trigger or 2 finger trigger.
- All metal construction.
- Tungsten carbide ball valve, seat & stainless steel swivel insures long life & durability.
- In-handle filter reduces clogging & increases tip life.
- Swivel reduces hose kinks & ssures effortless control.
- Includes 662-517 reversible tip.
- Pressure rated at 250 Bar (3600 PSI).
- Lightweight, only 0.57 kg (20 ounces).



2-Finger Gun



4-Finger Gun



LX-40 Airless Gun

Part No. 550-540 (2 Finger Trigger)

- All-metal construction
- In-handle filter
- Tungsten carbide ball valve ensures long life
- Includes 662-517 reversible tip
- Pressure rated at 207 Bar (3000 PSI)

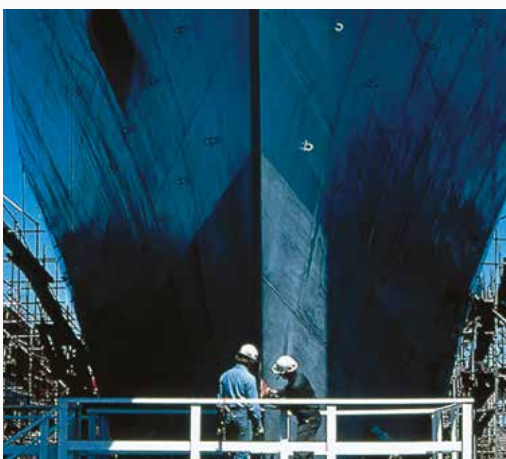
Stainless Steel Airless Guns

For centuries it has been the ultimate expression of metallic strength. Stainless steel is the strongest, most powerful, most durable and reliable alloy ever created. It was used to forge swords, armor and cannons and, for decades, has forged the best spray guns in the world – guns that can handle higher pressures and specialized coatings.

Industrial



Commercial



S-3 Airless Gun

Gun 550-250
Gun Hose Tip Kit 550-460

- Stainless steel fluid passages.
- In-handle filter
- Tungsten carbide ball valve & seat ensures long life & durability.
- Easy 4 finger trigger pull.
- 1/4" Swivel reduces hose kinks.
- Includes 662-517 SC-6+ reversible tip
- Pressure rated at 270 Bar (3900 PSI).



S-5 Airless Gun

Gun 550-100
Gun Hose Tip Kit 550-110

- All metal construction.
- Stainless steel fluid passages.
- Tungsten carbide ball valve & seat ensures long life & durability.
- Pressure rated at 345 Bar (5000 PSI).
- Front feed, filterless design for heavy coatings.
- Easy 2 finger trigger pull.
- Includes 662-517 SC-6+ reversible tip.



S-7 Airless Gun

1/4" Swivel - G-thread
3/8" Swivel - G-thread

Product No. 550-260
Product No. 550-270

- Stainless steel fluid passages.
- In-handle filter
- Available in two swivel sizes for less restriction.
- Tungsten carbide ball valve & seat insures long life & durability.
- Easy 4 finger trigger pull.
- Swivel reduces hose kinks.
- Includes 721-517 High pressure reversible tip.
- Pressure rated at 530 Bar (7700 PSI).

Airless Tips

Understanding Airless Tips

Airless spray tips are a key component to the successful operation of an airless spray system. They define the spray pattern, control the flow of the coating being sprayed & ultimately tell the pump how hard it must work. A proper understanding of airless tips is critical to the success of any airless application.

Airless Spray Tip Characteristics

It is important to remember that the orifice size, in conjunction with the fan-width size, determines the spray characteristics of the tip.

Tip Wear

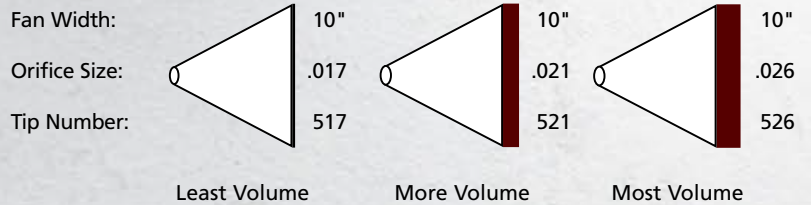
When beginning a project, choosing the right tip size & fan width will determine how profitable you will be through both coating consumption & production time. If the tip size being used is wrong — by either choice or through wear — mil thicknesses will be too heavy & the finish will be unprofessional.

The spray pattern chart demonstrates what happens as a tip wears. As wear occurs, the pattern size decreases & the orifice size increases. You will find that you have to make more passes to cover the same area. There is no standard rate of tip wear due to the variation of the abrasiveness of all coatings. Replace your tips after 100 gallons (378 liters); it's one of the most profitable things you can do.

Examples for understanding Airless Tips

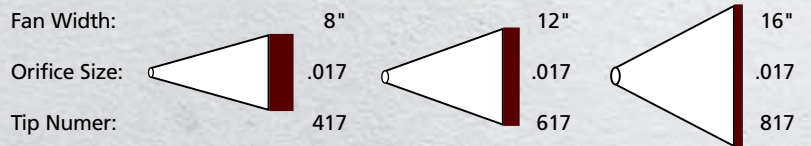
EXAMPLE A:

The larger the orifice with the same fan width, the greater the volume of paint applied to the area.



EXAMPLE B:

The larger the fan width with the same orifice means the same amount of material is being applied over a greater area. The result is less volume of paint per square inch.



Example of a 517 tip fan pattern as it wears

SPRAY PATTERN WIDTHS			
New 517	Worn to 419	Worn to 321	Worn to 223
FLOW RATES			
.31 gpm (1.17 lpm)	.39 gpm (1.47 lpm)	.47 gpm (1.78 lpm)	.57 gpm (2.15 lpm)
FLOW RATE INCREASE			
0%	26%	52%	84%

SC-6+ (662-XXX)

- New and improved with up to a 22% wider fan pattern
- Starts wider, stays wider than the Titan SC-6 tips
- The industry's longest lasting orifice resulting in less wasted paint
- Fits all Titan and most industry spray gun guards



Orifice Sizes – Inches

Fan Pattern Width	Inches	MM	.007	.009	.011	.013	.015	.017	.019	.021	.023	.025	.027	.029	.031	.033	.035	.039	.043	.045	.051	.055
	2 - 4	51 - 102	107	109	111	113	115	117														
4 - 6	102 - 152	207	209	211	213	215	217	219	221	223	225	227	229	231	233	235						
6 - 8	152 - 203	307	309	311	313	315	317	319	321	323	325	327	329	331	333	335						
8 - 10	203 - 254	407	409	411	413	415	417	419	421	423	425	427	429	431	433	435	439	443	445	451	455	
10 - 12	254 - 305		509	511	513	515	517	519	521	523	525	527	529	531	533	535	539	543	545	551	555	
12 - 14	305 - 356		609	611	613	615	617	619	621	623	625	627	629	631	633	635	639	643	645	651	655	
14 - 16	356 - 406							719	721					731		735						
16 - 18	406 - 457								821					831								
Flow (gpm)	---	0.05	0.09	0.12	0.18	0.24	0.31	0.39	0.47	0.57	0.67	0.78	0.91	1.03	1.17	1.32	1.64	1.99	2.18	2.80	3.26	
Flow (lpm)	---	0.19	0.34	0.45	0.68	0.91	1.17	1.47	1.78	2.15	2.53	2.95	3.44	3.89	4.42	4.99	6.20	7.52	8.24	10.58	12.32	

TR2 (692-XXX)

- Switch to wide or narrow fan patterns with a twist
- Speed and control at your fingertips
- One tip with two fan patterns
- Consistent film thickness when using wide or narrow fan pattern



Orifice Sizes – Inches

Fan Pattern Width	Inches	MM	.011	.013	.015	.017	.019	.021	.023	.027	.031	.035
	2 - 4	51 - 102										
4 - 6	102 - 152											
6 - 8	152 - 203	311	313									
8 - 10	203 - 254	411		415	417							
10 - 12	254 - 305			515	517	519	521					
12 - 14	305 - 356									627		535
14 - 16	356 - 406											635
16 - 18	406 - 457										831	
18 - 20	457 - 508											
20 - 22	508 - 559											
22 - 24	559 - 610											
24 - 26	610 - 660								1223		1231	
Flow (gpm)	-----	0.12	0.18	0.24	0.31	0.39	0.47	0.57	0.78	1.03	1.32	
Flow (lpm)	-----	0.45	0.68	0.91	1.17	1.47	1.78	2.15	2.95	3.89	4.99	

WideSpray (661-XXXX)

Orifice Sizes – Inches

Fan Pattern Width	Inches	MM	.019	.021	.023	.025	.027	.029	.031	.033	.035	.037
	24 - 26	610 - 660	1219	1221	1223	1225	1227	1229	1231	1233	1235	1237
Flow (gpm)	-----	0.39	0.47	0.57	0.67	0.78	0.91	1.03	1.17	1.32	1.47	
Flow (lpm)	-----	1.47	1.78	2.15	2.53	2.95	3.44	3.89	4.42	4.99	5.56	





Synergy FineFinishing Tip (671-XXX)

- Pressure rated at 5000 PSI (34.5 MPa)
- Particle size up to 27% smaller than a standard tip
- Interchangeable with industry standard safety guards
- Ideal for lacquers, stains, and clear coats
- Insertion and knockout tool for easy assembly
- Increased transfer efficiency

Orifice Sizes – Inches

Fan Pattern Width	Orifice Sizes – Inches					
	Inches	MM	.008	.010	.012	.014
2 - 4	51 - 102					
4 - 6	102 - 152	208	210	212	214	
6 - 8	152 - 203	308	310	312	314	
8 - 10	203 - 254	408	410	412	414	
10 - 12	254 - 305		510	512		
12 - 14	305 - 356			612		
Flow (gpm)	---	0.07	0.11	0.16	0.21	
Flow (lpm)	---	0.26	0.42	0.60	0.79	



TR² Fine Finishing Tip (693-XXX)

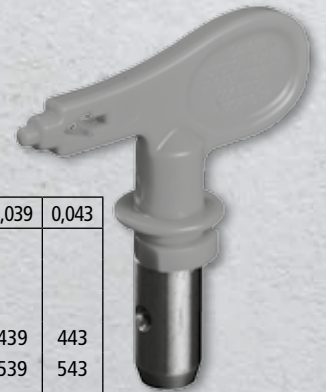
Orifice Sizes – Inches

Fan Pattern Width	Orifice Sizes – Inches				
	Inches	MM	.010	.012	.014
10 - 12	254 - 305	510	512	514	
Flow (gpm)	---	0.11	0.16	0.21	
Flow (lpm)	---	0.42	0.60	0.79	

High Pressure Tip (696-XXX)

- Heavy duty reversible tip.
- Pressure rated to 530 Bar (7700 psi).

cm	Inches	0,007	0,009	0,011	0,013	0,015	0,017	0,019	0,021	0,023	0,025	0,027	0,029	0,031	0,033	0,035	0,037	0,039	0,043	
10 - 20	2 - 4				113	115	117	119												
20 - 30	4 - 6		209	211	213	215	217	219	221	223	225	227								
30 - 40	6 - 8			311	313	315	317													
20 - 25	8 - 10			411	413	415	417	419	421	423	425	427	429	431	433	435		439	443	
25 - 35	10 - 12						517	519	521	523	525	527	529	531	533	535		539	543	
35 - 45	12 - 14											627								
	Flow	0,05	0,09	0,12	0,18	0,23	0,30	0,40	0,47	0,57	0,66	0,77	0,88	1,10	1,20	1,30	1,47		2,05	



Adjustable Self Cleaning Tip (341-XXX)

- Fully adjustable fan widths from 2" to 24" reduce overspray.
- Perfect when changing from spraying walls to cutting in for trim work or around windows.
- Self-cleaning feature eliminates costly downtime.



Product Number	Orifice Range	Coating Range
341-015	.005-.018	Lacquer & Stain
341-020	.007-.019	Lacquer & Stain
341-024	.007-.026	Lacquer & Enamals
341-028	.011-.026	Lacquer & Enamals
341-041	.017-.035	High Builds
341-049	.021-.054	Very Heavy

Flat Tip (002-XXX)

Orifice Sizes – Inches

Fan Pattern Width	Inches	MM	.007	.009	.011	.013	.015	.017	.018	.019	.021	.023	.025	.026	.027	.029	.031
	2 - 4	51 - 102	107	109	111		115	117		119	121						
4 - 6	102 - 152	207	209	211	213	215	217		219	221	223	225					231
6 - 8	152 - 203		309	311	313	315	317	318	319	321	323	325		327			331
8 - 10	203 - 254	407	409	411	413	415	417	418	419	421	423	425	426	427	429		431
10 - 12	254 - 305	507	509	511	513	515	517	518	519	521	523	525		527	529		531
12 - 14	305 - 356	607		611	613	615	617	618	619	621	623	625	626	627			631
14 - 16	356 - 406				713	715	717		719	721	723	725		727			731
16 - 18	406 - 457			811	813	815	817	818	819	821	823	825		827			831
18 - 20	457 - 508				913	915		918			923	925	926				931
20 - 22	508 - 559						1017			1021							1031
22 - 24	559 - 610																
24 - 26	610 - 660				1213	1215		1218		1221	1223		1226		1229	1231	
26 - 28	660 - 711																
Flow (gpm)	-----	0.05	0.09	0.13	0.18	0.24	0.31	0.35	0.39	0.47	0.57	0.67	0.73	0.78	0.91	1.03	
Flow (lpm)	-----	0.19	0.34	0.49	0.68	0.91	1.17	1.32	1.47	1.78	2.15	2.53	2.76	2.95	3.44	3.89	



Orifice Sizes – Inches

Fan Pattern Width	Inches	MM	.033	.035	.036	.039	.041	.042	.043	.047	.049	.052	.055	.058	.062	.072
	2 - 4	51 - 102														
4 - 6	102 - 152															
6 - 8	152 - 203				336			342				352				
8 - 10	203 - 254	433	435	436	439	441			443		449	452				472
10 - 12	254 - 305			536	539				543		549	552		558	562	
12 - 14	305 - 356	633	635	636		641			643			652	655			
14 - 16	356 - 406			735												
16 - 18	406 - 457		835	836	839				843	847						862
18 - 20	457 - 508			936												962
20 - 22	508 - 559															
22 - 24	559 - 610				1136					1143						
24 - 26	610 - 660															
26 - 28	660 - 711				1336											
Flow (gpm)	-----	1.17	1.32	1.40	1.64	1.81	1.90	1.99	2.38	2.58	2.91	3.26	3.62	4.14	5.58	
Flow (lpm)	-----	4.42	4.99	5.29	6.20	6.84	7.18	7.52	9.00	9.75	11.00	12.32	13.68	15.65	21.09	

Fine Finish Metering Orifice (512-XXX)

- Designed to produce a more complete atomization of the spray pattern.
- Increases your transfer efficiency by allowing you to spray at lower pressures.
- When ordering, always use a metering orifice that is at least .004 larger than the spray tip being used. Example: a .019 tip should be used with a .023 Metering Orifice

Product Number	Orifice in Inches	Max. Tip Size Recommended
512-011	.011	.007
512-013	.013	.009
512-015	.015	.011
512-018	.018	.013
512-021	.021	.017
512-023	.023	.019
512-026	.026	.021
512-031	.031	.026
512-035	.035	.031
512-039	.039	.035



Guards and Filters

Nothing destroys a piston or a gun tip faster than debris in the coating. That's why you need the best paint filters available. TITAN gun filters and manifold filters are designed for long life and maximum protection.

- Made from stainless steel for strength and service
- Wide variety of mesh sizes from 10 to 100
- Engineered for durability and long life

Residential



Manifold Filter



Seals

- Solvent resistant white seal...651-020
- Solvent resistant white seal, 6 pack...661-021
- Metal retainer...651-040
- Solvent resistant seal & retainer kit, 5 pieces...661-020
- Solvent resistant seal & retainer kit, 12 pieces...65 1-060
- Latex black seal...651-042



SC-6+ Guard

- Design allows guard to be installed without tools.
- Seal cavity on safety guard has large "flats" for quick & easy installation of seal.
- For use with Titan SC-6 tip only.
- Interchangeable with most competitive bases.



0289228 G Thread
0289394 F Thread

High Pressure Tip Guard

- Interchangeable with most industry spray guns.

661-027 7/8" -14 - 530 Bar (7700 PSI)



Titan, Graco, ASM

Adjustable Tip Guard

- Interchangeable with most industry spray guns

450-100A 7/8"-14 Titan, Wagner, Graco
SprayTECH, ASM



Flat Tip Guard

0153003 7/8"



In-Line Filter

Designed for added filtration or when using a gun without a filter, this In-Line filter attaches easily between standard airless hoses.

Product No. 550-223



Gun & Pump Filters

Reverse thread design prevents filter from unscrewing when handle is removed for cleaning & replacement. Packaged two per pack.



Threaded

Filters	Bulk	2 Pack
*Coarse (Green)	540-030	500-200-03
Medium (White)	540-060	500-200-06
Fine (Yellow)	540-100	500-200-10
Extra Fine (Red)	540-150	500-200-15

For use with LX-80[®] & LX-80 Platinum
*Manifold Filter for 330 & 440i.

Unthreaded

Filters	Bulk	2 Pack
*Coarse (Green)	581-059	0089957
Medium (White)	581-060	0089958
Fine (Yellow)	581-062	0089959
Extra Fine (Red)	581-061	0089960

For use with G-10, LX-30, LX-40, LX-50, LX-70, S-3 and S-7.
*Manifold Filter for 450e and 460e.



Pump Manifold Filters

For use on PowrTwin 5500, 4900, 6900, 8900, 10000, 12000, PY 4950 6950 8950

Mesh No.	Product No.
Mastic-0 mesh	930-004
Coarse-5 mesh	930-005
*Medium-50 mesh	930-006
Fine-100 mesh	930-007

*Note: Standard with sprayer, includes ball.

For use on PowrTwin 3500, 4500, & Hydra

Mesh No.	Product No.
Coarse-5 mesh	920-001
*Medium-50 mesh	920-004
Fine-100 mesh	920-005



For use on Titan 640, 840, 1140, 650, 750, 850, 1150

Mesh	Product No.
Coarse-30 mesh	730-067-30
Medium-60 mesh	730-067
Fine-100 mesh	730-067-10

For use on Titan E15, E20, G40 & G55

Mesh	Product No.
Coarse-30 mesh	761-042

*Note: Standard with sprayer, excludes ball. Ball Check sold separately 920-103

Inlet Screens

Never operate your siphon or direct immersion airless pump without an inlet filter in place. Also known as a "rock catcher", this product serves as a filtering screen & prevents any debris from entering the fluid section that can cause damage & expensive repairs.

Titan Inlet Screens (Small)		Titan Inlet Screens (Large)	
Mesh	Product No.	Mesh	Product No.
30 mesh (Fine)	700-900	30 mesh (Fine)	710-191
10 mesh (Coarse)	700-805	10 mesh (Coarse)	710-046

Inlet Screens

Units	Product No.
4900, 6900, 8900, 12000	0509762A
All GHD & DI Units, 4950, 6950, 8950	710-046
Hydra Pro IV	0509762A



Reach Tools

When your arms just aren't long enough

Ladders and step stools have their limits. Wouldn't it be nice to reach high places, to reach over foliage, to reach all the way to a high ceiling without ever leaving the floor or the ground? TITAN offers a collection of reach tools that allow you to apply every coating imaginable to out-of-reach areas. From gun extensions to extension poles and pole guns, TITAN is your source for easier and more efficient coating application.

- Maximize the speed and efficiency of your operation
- Minimize danger – eliminate reaching from ladders
- Precision machined for a perfect fan pattern
- Get the job done safely and quickly the first time

Extended Reach



Gun Extensions - Aluminum

- Lightweight and easy to handle.
- Can be used with most brands of airless spray guns.
- Pressure rated at 250 Bar (3600 PSI).

7/8" G-Thread - Standard

15 cm (6")	Product No. 651-070
30 cm (12")	Product No. 651-071
45 cm (18")	Product No. 651-072
60 cm (24")	Product No. 651-073

11/16" F-Thread

15 cm (6")	Product No. 651-121
30 cm (12")	Product No. 651-122
45 cm (18")	Product No. 651-123
60 cm (24")	Product No. 651-124



High Pressure Gun Extensions - Stainless Steel

- Heavy duty stainless steel.
- Can be used with most brands of airless spray guns.
- Pressure rated at 530 Bar (7700 PSI).

7/8" G-Thread - Standard

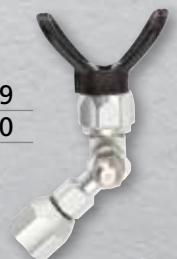
15 cm (6")	Product No. 611-280
30 cm (12")	Product No. 611-281
45 cm (18")	Product No. 611-282
60 cm (24")	Product No. 611-283



Swivel Head

For use with Titan Gun Extensions & Extension Poles. Permits a 260° rotation for greater spraying versatility & accessibility.

7/8" G-Thread - Female	Product No. 651-139
7/8" G-Thread - Male	Product No. 711-600



Extension Pole

These lightweight aluminum extensions are constructed with inner core ribs which reinforce the pole & greatly increase their rigidity. The inner core rib construction allows different length poles to be easily coupled together up to 12', while maintaining the proper rigidity to suit most job conditions.

- Reach high out-of-the-way places when spray or pressure rolling.
- Adapts to most airless guns.
- Includes 310-062 extension pole coupling.
- Pressure rated at 250 Bar (3600 PSI).



46 cm (1.5') Pole	Product No. 310-381-1
90 cm (3') Pole	Product No. 310-383-1
180 cm (6') Pole	Product No. 310-386-1
90 cm (3') Extension Pole with Swivel Head, 7/8" Nut	Product No. 310-390
180 cm (6') Extension Pole with Swivel Head, 7/8" Nut	Product No. 0279976L

Non-Spit Valve

- Eliminates spitting that occurs when spraying with gun and pole extensions
- 7/8" connection works with most industry extensions and guns



Non-Spit Valve Product No. 0521012

Angle Adapter Assembly

Adapt any extension pole to any standard airless gun. Because of its right-angle design, the angle adapter allows the pole to extend from the gun at the same angle as the handle. The result is greater efficiency & comfort. Pressure rated at 250 Bar (3600 PSI).

Refer to the retaining nut chart on this page to select the proper nut size to adapt to your airless gun.



Product No. 0509907

Extension Pole Coupling

Allows you to connect different length extruded poles together to create different lengths for any application. (Do not exceed 12')



Product No. 0509908

6' Outrigger

- Convert existing gun to 6' (180 cm) pole gun & back in seconds.
- Allows you to increase production & profits.
- Constructed of lightweight & rigid aluminum to reduce arm fatigue.
- Large, gun installation holder & knob.
- No additional hoses or fittings required.
- Adapts to all Titan airless spray guns & most manufacturers airless spray guns.

Product No. 757-920



LX-75 Pole Guns

- All metal construction.
- Full length needle ensures positive shut-off at tip.
- Pressure rated at 250 Bar (3600 PSI).
- Reach those high, out-of-the-way places that normally require the use of a ladder or scaffolding.
- Swivel
- In-handle filter.
- Ergonomic design

120 cm (4') Pole Gun

550-495



LX-70 In-Line Gun

- All metal construction.
- "In-line" design is a natural extension to any pole.
- In-handle filter.
- Swivel reduces hose kinks and ensures effortless control.
- Pressure rate at 250 Bar (3600 psi).

Product No.	550-475
Repair Kit No.	550-487



Rollers

The speed of a sprayer and the control of a roller in one package

Every painting contractor has worked with a roller. It's an efficient and controlled way to apply paint. But it's also much slower than a sprayer – up to 40% of your labor time is spent charging the roller with paint. What if you could combine the two? TITAN has the answer.

Inner Feed Rolling



Inner Feed Pressure Roller

Instead of dipping the roller into the paint, why not feed the paint into the roller? You get the best of both application worlds, increasing the speed and efficiency of your work – saving time and making a lot more money. It's much easier than you think and TITAN has the equipment that lets you get the job done right.



- Up to 40% faster than standard roller application
- The roller never leaves the surface
- Easy to use and easy to clean up

23 cm (9") Roller Head	Product No. 310-934
Inner Feed Repair Kit	Product No. 310-905

Inner Feed Pressure Kit Includes:

- 3' Pole
- 90° Angle Adapter.
- Inner Feed Roller Head Assembly.
- 1/2" x 9" High Quality Inner Feed Roller Cover.
- Fits Onto Any Airless Gun.

9" Pressure Roller Kit	Product No. 310-150
------------------------	---------------------

Telescoping Pressure Roller (Low Pressure)

- For high production paint applications where spraying is impractical.
- Patented auger head design evenly distributes coating for a professional finish every time.
- Comes with light weight aluminum adjustable pole with a working pressure of 83 Bar (1200 PSI).
- The exclusive telescoping roller design has a large collar that allows you to quickly adjust the length of the pole from 0.9 m - 1.8 m (3' - 6').
- Also includes Titan's LX-70 In-Line Gun which features an all metal design & a filter in the handle for a superior finish & extended life.

Telescoping Pole Only	Product No. 310-938
LX-70 Telescoping Roller Kit with 23 cm (9") roller head 1/2" (1.3 cm) nap	Product No. 310-950

(Caution! Do not use for spray applications.)

Spray Roller

On rough, porous surfaces like stucco and concrete block many contractors apply the coating with a sprayer and then back-roll it into the surface. It can be messy (lots of overspray) and time consuming (you need two workers to do it). Now imagine what it would be like to spray AND roll at the same time. You save time and make money. That's what TITAN is all about.

- Ideal for very porous and rough surfaces
- Spray on the down-stroke and roll on the upstroke
- Saves both time and money

23 cm (9") Spray Roller Head Assembly Product No. 310-049

Spray Roller Kit Includes:

- 3' Pole.
- 90° Angle Adapter.
- Spray Roller Head Assembly.
- 1/2" x 9" High Quality Inner Feed Roller Cover.
- Fits Onto Any Airless Gun.



3-in-1 Spray/Roll Application Kit

The Spray/Roll Application Kit offers the proper airless spray painting tools for just about every possible painting condition. It's the first complete application kit created for professionals. By selecting the proper combination of tools, the professional painter can choose to either spray, spray & back-roll or simply roll.

Includes:

- LX-70 In-Line Gun.
- 23 cm (9") Spray Roller Head Assembly.
- 90cm (3') Extruded Pole.
- 23 cm (9") Pressure Roller Head Assembly.
- Swivel Head Assembly.

Application Kit Product No. 310-110



Roller Head Replacement Covers

Spray Roller Replacement Covers

Size	Nap Thickness	Product No.
23 cm (9")	1.2 cm (1/2")	311-050-9
23 cm (9")	1.9 cm (3/4")	311-075-9
23 cm (9")	3.2 cm (1-1/4")	311-125-9

Inner Feed Pressure Roller Replacement Covers

Size	Nap Thickness	Product No.
23 cm (9")	0.95 cm (3/8")	312-037-9
23 cm (9")	1.2 cm (1/2")	312-050-9



Hoses

The right equipment for the right job

Just a commodity? Think again. A hose that fails or bursts can cost you time, paint and worse. There is a lot of pressure in that hose and you need reliability. You need TITAN – the industry leader in top-shelf paint hoses and flexible whips.

- Solid urethane construction designed to withstand time and pressure
- Easy to coil and uncoil
- Wide variety of diameters and lengths

Extended Length



High Quality Airless Hose

- Urethane cover is bonded to an inner nylon braid making it highly flexible & kink resistant.
- Conductive tube design for proper grounding.
- Durable abrasion-resistant urethane cover resists wear.



Part No.	I.D.	Length		PSI	Maximum Working Pressure		End Connection
		Feet	Meters		MPa		
0291007	3/16"	25	7.6	3300	22.8	1/4" NPSM (FBE)	Swivel
0291008	3/16"	50	15	3300	22.8	1/4" NPSM (FBE)	Swivel
316-513	1/4"	25	7.6	3300	22.8	1/4" NPSM (FBE)	Swivel
316-505	1/4"	50	15	3300	22.8	1/4" NPSM (FBE)	Swivel
0286498	1/4"	50	15	3600	24.8	1/4" NPSM (FBE)	Swivel
250-114*	1/4"	50	15	4500	31	1/4" NPSM (FBE)	Swivel
250-614*	1/4"	25	15	7400	51	1/4" NPSM (FBE)	Swivel
0508342	3/8"	25	7.6	3300	22.8	1/4" NPSM (FBE)	Swivel
690-375-50	3/8"	50	15	3300	22.8	3/8" NPSM (FBE)	Swivel
0291006	3/8"	50	15	5400	37	3/8" NPSM (FBE)	Swivel
0286499	3/8"	50	15	3600	24.8	1/4" NPSM (FBE)	Swivel
225-112*	1/2"	25	7.6	3000	20.7	1/2" NPSM (FBE)	Swivel
250-112*	1/2"	50	15	3000	20.7	1/2" NPSM (FBE)	Swivel
250-512*	1/2"	50	15	5100	35.2	1/2" NPSM (FBE)	Swivel
250-638*	3/8"	50	15	7400	51	3/8" NPSM (FBE)	Swivel

Airless Fluid Hose Whips



5' Whip Hose

9' Whip Hose

Part No.	I.D.	Length		PSI	Maximum Working Pressure		End Connection
		Feet	Meters		MPa		
550-240	3/16"	3	0.9	3300	22.8	1/4" NPSM (F/M)	Swivel
316-506	3/16"	5	1.5	3300	22.8	1/4" NPSM (F/M)	Swivel
550-222	3/16"	9	2.7	3300	22.8	1/4" NPSM (F/M)	Swivel
203-514*	1/4"	3	0.9	4500	31	1/4" NPSM (FBE)	Swivel
550-227	1/4"	6	1.8	3300	22.8	1/4" NPSM (F/M)	Swivel
316-533*	1/4"	6	1.8	3300	22.8	1/4" NPSM (FBE)	Swivel

- * Textile Braid - Spring guards at both ends:
- FBE - Female Both Ends
- NPT - National Pipe Tapered Thread:
- MBE - Male Both Ends
- NPSM - National Pipe Straight Mechanical Thread:
- F/M- 1 Female / 1 Male Connection

Hose Cover

Protect your airless hose from paint and abrasion damage with a durable 4 mil poly hose cover. Comes in 1150 feet lengths with perforation every 50 feet to fit any length of hose.

Hose cover

Product No. 0521424



Reel EZ Hose Reels

- The Reel-EZ virtually eliminates hose hassles & increases your production. The Reel-EZ 16 mounts to the frame of all Titan cart style paint sprayers with a heavy duty universal mounting bracket. The Reel-EZ 10 mounts to the frame of all Titan skid style paint sprayers such as the 450e. Both the Reel-EZ 16 & Reel-EZ 10 mount to most major manufacturer's paint sprayers with similar designs.
- The Reel-EZ 16 can hold up to 100' (30.5 m) of 1/4" airless hose & the Reel-EZ 10 can hold up to 50' (15.2 m) of 1/4" airless hose. Both are rated at 3600 psi (25 MPa).

Reel-EZ 16" (40.6 cm) Cart-Mount

Product No. 769-100

Reel-EZ 10" (25.4 cm) Skid-Mount

Product No. 769-200



High Pressure Fluid Gauge Kit

Includes: 5000 PSI (34.5 MPa) high pressure fluid gauge attached to a T-Fitting & one 1/4" (F)(.63cm) fitting.

Fluid Gauge Kit 3/8 x 3/8

Product No. 730-420A

Fluid Gauge Kit 1/4 x 1/4

Product No. 0508239

Fluid Gauge Only

Product No. 0508626



High Pressure Swivels

- Pressure rated at 345 Bar (5000 PSI).
- Reduce the chance of hose kinks, extend hose life.
- Reduce effort when coiling & uncoiling hose.
- Less arm fatigue when attached to gun.
- Patented ball bearing design.

Gun-To-Hose/Hose-To-Pump

1/4" (.63 cm) NPS (F) x 1/4" (.63 cm) NPS (M)

Product No. 0509985

Hose-To-Hose

1/4" (.63 cm) NPS(M) x 1/4" (.63 cm) NPS(M)

Product No. 0502135



Liquids

No matter what the sprayer – hydraulic, gear driven, gas-powered or electric – if you want a long service life you will need to care for it with the same attention you care for your own car or truck. That means changing the oil, lubricating the piston, cleaning the unit, the gun and the tip. TITAN has all the products you need to keep your accessories and equipment clean and functioning in top condition.

- Specially formulated for all sprayers, accessories and equipment
- Maintain clean and efficient operation for better profit
- Prolong the life of your investment

Start up



Clean up



LS-10 Liquid Shield Plus

- Cleans & protects your spray system against rust & corrosion.
- Extends the life of your pump.
- Now with anti-freeze protection.

Size	Product No.
1 Qt. / 950 ml bottle	314-482
4 oz. / 120 ml bottle	314-483
1 Gallon bottle	0521418



Piston Lube

- Specially formulated to prevent materials from adhering to the piston rod.
- Suitable for use with most airless piston pumps.

Size	Product No.
8 oz. / 236 ml bottle	314-480
4 oz. / 120 ml bottle	314-481
1 Qt. / 950 ml bottle	700-926



Paint Mate

Water-based coating additive that significantly improves atomization with HVLP sprayers without compromising the integrity of the coating.

Size	Product No.
1 Qt. / 950 ml bottle	0508071



Coolflo™

- Hydraulic Fluid for PowrTwin & Hydra sprayers.

Size	Product No.
1 Qt. bottle	430-362
1 gallon / 3.78 l	430-361



PumpShield

Cover your sprayer to prevent paint overspray from sticking to it. Keeps your sprayer looking new.

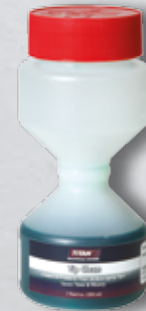
Size	Product No.
12 Oz. / 354 ml bottle	0297055



Tip Clean

- Hour-glass design allows easy cleaning of all airless tips and safe storage.
- Cleaning fluid removes contamination and paint residue, ensuring best spraying results.

Size	Product No.
7 ozs. / 200 ml	314-207



Grease - Lubriplate GR-132

- Specially designed for gear boxes.

Size	Product No.
14 oz. / 414 ml Can	314-171
6 lb.	9870307



Air Care

- Specially formulated to prevent corrosion in air motors.
- Suitable for use with most air driven sprayers.

Size	Product No.
1 Qt. / 950 ml bottle	311-101



Part Renu™

- Safely removes paint from spray guns and sprayer accessories.
- Non-flammable water based cleaner is environmentally safe, odor free - will not burn skin.
- Easy to use strainer included in the starter kit.
- Easily washes off with water.

Size	Product No.
1 gallon / 3.78 l Part Renu	0521423
5 gallon / 18.9 l Starter Kit	0521010



Manifolds

Spraying is more than just hooking up a hose. Sometimes the situation calls for extending hose length or altering the angle of the hose connected to the sprayer. That's when you need TITAN manifolds and fittings.

- We have a fitting for every job
- Manufactured from quality stainless steel
- Engineered for durability and long life

Commercial



90° Street Elbows

Description	Product No.
3/8" NPT(F) X 3/8" NPT(M)	818-002
1/2" NPT(F) X 1/2" NPT(M)	818-003
3/4" NPT(F) X 3/4" NPT(M)	818-010



Hose To Hose Couplings

Description	Product No.
5000 PSI Max Working Pressure	
1/4" NPS (M) x 1/4" NPS (M)	490-012
1/4" NPT (M) x 3/8" NPT (M)	812-003
3/8" NPS (M) x 3/8" NPS (M)	490-014
1/2" NPS (M) x 1/2" NPS (M)	449-621
7500 PSI Max Working Pressure	
1/4" NPTF (M) x 1/4" NPTF (M)	9885642
3/8" NPTF (M) x 3/8" NPTF (M)	9885643
1/2" NPTF (M) x 1/4" NPTF (M)	9885644
3/4" NPTF (M) x 1/2" NPTF (M)	9885645
3/8" NPTF (M) x 1/4" NPTF (M)	9885646
1/2" NPTF (M) x 3/8" NPTF (M)	9885647
1/2" NPTF (M) x 1/2" NPTF (M)	9885648



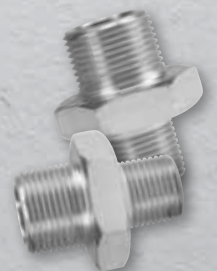
Manifold To Manifold Couplings

Description	Product No.
1/4" NPT(M) X 1/4" NPT(M)	490-002
1/4" NPT(M) X 3/8" NPT(M)	490-006
3/8" NPT(M) X 3/8" NPT(M)	814-004
3/8" NPT(M) X 1/2" NPT(M)	814-005
1/2" NPT(M) X 1/2" NPT(M)	814-006
1/2" NPT(M) X 3/4" NPT(M)	101-201
3/4" NPT(M) X 3/4" NPT(M)	814-007



Manifold To Hose Couplings

Description	Product No.
1/8" NPT(M) X 1/4" NPS(M)	490-001
1/4" NPT(M) X 1/4" NPS(M)	227-006
1/4" NPT(M) X 3/8" NPS(M)	804-555
1/4" NPT(M) X 1/2" NPS(M)	814-003
3/8" NPT(M) X 1/4" NPS(M)	812-003
3/8" NPT(M) X 3/8" NPS(M)	808-555
3/8" NPT(M) X 1/2" NPS(M)	815-005
1/2" NPT(M) X 1/2" NPS(M)	228-002
3/4" NPT(M) X 1/2" NPS(M)	814-555



Reducer Bushings

Description	Product No.
3/8" NPT(M) X 1/4" NPT(F)	817-001
1/2" NPT(M) X 1/4" NPT(F)	929-061
1/2" NPT(M) X 3/8" NPT(F)	541-009
3/4" NPT(M) X 1/4" NPT(F)	929-062
1" NPT(M) X 3/4" NPT(F)	929-076
1-1/4" NPT(M) X 1" NPT(F)	929-077



Pipe Tees

Description	Product No..
1/4" NPT (F)	970-023
3/8" NPT (F)	817-002
1/2" NPT (F)	817-003
3/4" NPT (F)	817-004



Swivel Union

Description	Product No.
1/4" NPS(F) X 1/4" NPT(M)	490-005
3/8" NPS(F) X 1/4" NPT(M)	490-042
1/4" NPS(F) X 3/8" NPT(M)	490-032
3/8" NPS(F) X 3/8" NPT(M)	490-043
1/2" NPS(F) X 1/2" NPT(M)	200-555
3/4" NPS(F) X 3/4" NPT(M)	138-037
1" NPS(F) X 1" NPT(M)	200-556

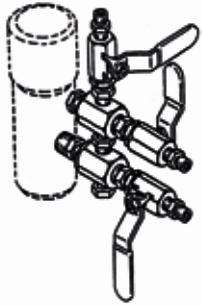


Pipe Plugs

Description	Product No.
1/4" NPT (M)	227-027
3/8" NPT (M)	227-033
1/2" NPT (M)	210-023
3/4" NPT (M)	210-038



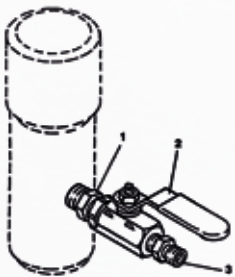
Modular Manifolds



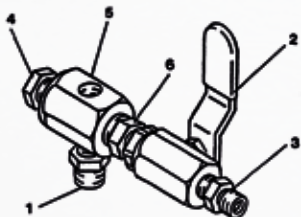
3-GUN
MANIFOLD ASSEMBLY



6-GUN
MANIFOLD ASSEMBLY



1-GUN ADD-ON KIT



ADD-A-GUN KIT

Gun Manifold Assemblies

1/4" Multiple Gun Manifold Assemblies*

Part Number	Part Number	975-212 2-Gun 1/4"	975-213 3-Gun 1/4"	975-214 4-Gun 1/4"
975-111	1-Gun Add on 1/4"	1	1	1
975-200	Add-A-Gun Kit 1/4"	1	1	3
0533348	1/4" NPT Ball Valve, 10000 PSI			

*Hose Connection is 1/4" NPSM(M)

3/8" Multiple Gun Manifold Assemblies*

Part Number	Part Number	975-312 2-Gun 3/8"	975-313 3-Gun 3/8"	975-314 4-Gun 3/8"
975-311	1-Gun Add on 3/8"	1	1	1
975-300	Add-A-Gun Kit 3/8"	1	1	3
0533347	3/8" NPT Ball Valve, 10000 PSI			

*Hose Connection is 3/8" NPSM(M)

Gun Add On Kits

Gun Manifold Assemblies

Item No.	Part No.	Desc.	975-111	975-311	975-200	975-300
			1-Gun Add-On 1/4"	1-Gun Add-On 3/8"	Add-A-Gun 1/4"	Add-A-Gun 3/8"
1	814-002	Nipple, Hex	1		1	
1a	814-004	Nipple, Hex		1		1
2	940-553	Valve, Ball	1		1	
2a	941-555	Valve, Ball		1		1
3	227-006	Nipple, Hex	1		1	
3a	808-555	Nipple, Hex		1		1
4	227-033	Plug, Pipe			1	1
5	970-100	Block, Manifold			1	1
6	814-004	Nipple, Hex		1	1	

Hopper

Hopper with squeeze table for material-gabs. The smooth, easily cleanable container is solvent resistant. Capacity up to 100 liters.

Part numbers:

Hopper incl. cover	2312715
Bag roller incl. rolling table	2309957
Hopper and bag roller package	2315342
Adapter	2312157
for Performance 1650e	
Adapter set 1	2312156
for Performance 450e - 1650e	
Adapter set 2	2315341
for PowrTwin 6900 DI	



ThermControl™ easy



ThermControl™ easy is specially developed for lacquer applications. Heating element and hose are compact in design to increase the flexibility handling capacities. Also available as Spraykit, incl. gun, tip, guard and fitting.

Part number basic unit: 2313185

Partnumber Spraykit: 2312712

ThermControl™ advanced



Thanks to the practical tires the ThermControl™ advanced can be transported easily on the building site. The 15 m hose can be conveniently wrapped around the hose reel. Also available as Spraykit, incl. gun, tip, guard and fitting.

Part number basic unit: 2313168

Partnumber Spraykit: 2312713

ThermControl™

Achieve an excellent spray pattern with minimal overspray by heating the paint rather than reducing the paint with solvent or water. The ThermControl™ units are adaptable to all Airless pumps especially to the Performance series. We advise to use the units in combination with a S3 gun. Both units are also available as Spraykit, incl. gun, tip, guard and fitting.



Specifications

ThermControl easy

ThermControl advanced

Voltage	230 V / 50 Hz	230 V / 50 Hz
Fuses	16 A	16 A
Power cord	4 m long, 3 x 1.5 mm ²	6 m long, 3 x 1.5 mm ²
Max. current consumption	2.6 A	5.9 A
Max. heating output	0.6 kW	1.3 kW
Max. operating pressure	25 MPa (250 bar)	25 MPa (250 bar)
Hose	DN6 - 10 m - steel reinforced	DN10 - 15 m - textile reinforced
Inner diameter of hose	6 mm	10 mm
Hose Length	10 m	15 m
Hose whip	-	DN5 - 1 m - steel reinforced
Inner diameter of hose whip	-	5 mm
Hose whip length	-	1 m
Hose whip fitting	-	1/4" NPSM
Connecting hose	-	DN6 - 1.6 m - textile reinforced
Inner diameter of connection hose	-	6 mm
Connection hose length	-	1.6 m
Connection hose fitting	-	1/4" NPSM
Max. viscosity of the coating material	5,000 mPas	25,000 mPas
Adjustable temperature range	20°C - 60°C	20°C - 60°C
Dead weight	3.2 kg	13.2 kg
Max. nozzle size (continuous operation with water)	0.011"; more than 50°C: 0.009"	0.013"; more than 50°C: 0.011"
Max. nozzle size (continuous operation with emulsion paint)	0.015"; more than 50°C: 0.013"	0.021"; more than 50°C: 0.019"

Titan is your complete accessory source for paint sprayers.



Titan PumpRunner

Ideal for most piston pumps. Your helper for a clean transport and an easy cleaning of your spraying unit.

P/N: 0286008



TR² Tip

- » Optimal adjustment to the particular object
- » Easy assembling
- » Switch quickly between two tip sizes

P/N: 692-XXX



Reversible Tip

- » Universal size fits most bases
- » Fewer passes and better coverage than competitors because of full fan pattern with minimal feathering
- » Brilliant surfaces

SC-6+ Reversible Tip P/N: 662-XXX

Synergy Reversible Tip P/N: 671-XXX



5-liter hopper

- » Ideally suited to handle small amounts of paints and laquer
- » Easy cleaning
- » Quick color changes possible at any time

P/N: 704-453



Airless Guns

- » Minimize hand fatigue
- » Solid, safe construction
- » Precision trigger for accurate delivery

LX-80" Gun P/N: 580-XXX

S3 Airless Gun P/N: 550-250

Further accessories

No-Build Tip Guard 7/8"	0289228
No-Build Tip Guard 11/16"	0289394
S3 Airless Gun, G-Thread, 1/4", Swivel	550-250
LX-80" Gun w/SC-6 Tip	580-100A
LX-80" Gun, Tip & Hose Kit	580-050
Reel-EZ 40 cm Hose Reel for 30.5 m 1/4" hose	769-100
Reel-EZ 25 cm Hose Reel for 15.2 m 1/4" hose	769-200
15 cm (6") Gun Extension	651-070
30 cm (12") Gun Extension	651-071
45 cm (18") Gun Extension	651-072
60 cm (24") Gun Extension	651-073
90 cm (3') Extension Pole	310-383-1
180 cm (6') Extension Pole	310-386-1
Extension Pole Swivel	651-139
Spray/Roll Application Kit	310-110
23 cm (9") Telescoping Pressure Roller Kit	310-950
1/4" x 15 m (50') Airless Hose, 214 bar	316-505
3/16" x 1 m (3') Airless Whip Hose	550-240
Extra Fine Gun Filter, Red	500-200-15
Fine Mesh Gun Filter, Yellow	500-200-10
Medium Mesh Gun Filter, White	500-200-06
Coarse Mesh Gun Filter, Green	500-200-03
Medium Mesh Manifold Filter	730-067
Small Inlet Screen (Rock Catcher)	700-805
Large Inlet Screen (Rock Catcher)	710-046
Piston Lube – 240 ml Bottle	314-480
Piston Lube – 120 ml Bottle	314-481
LS-10 Liquid Shield Plus – 1 l Bottle	314-482
LS-10 Liquid Shield Plus – 120 ml Bottle	314-483



Distributed by

Sold exclusively through professional distributors

Visit us at: www.titantool.com/international

All information contained in this brochure is based on the latest information available at time of printing. Titan reserves the right to make changes at any time, without notice.