



>>> RESPIRATORY PROTECTION



PRODUCT GUIDE
SUPPLIED AIR RESPIRATORS (SAR)

 **SPERIAN**
Protection you can trust

Sperian

The Complete Respiratory Solution

As a leading manufacturer of respiratory protection products, we've been protecting workers against respiratory hazards in many different environments around the world for over 100 years.

We offer one of the most integrated respiratory protection product lines available, from disposable filtering air purifying respirators, reusable half mask and full facepiece respirators (APR), supplied air respirators (SAR), powered air purifying respirators (PAPR), escape breathing apparatus (EBA), self-contained breathing apparatus (SCBA), to Chemical Biological Radiological Nuclear (CBRN) respiratory protection products. We have a respiratory solution for many applications and uses. And all our products meet or exceed strict industry standards, such as NIOSH and/or NFPA.

We've merged several well-known respiratory brands and grown from a prominent manufacturer of self-contained breathing apparatus (SCBA) to our present status as the total respiratory solution.

Sperian is recognized as a worldwide leader in the Personal Protective Equipment (PPE) industry. Organized around three core businesses, head protection, fall protection and body protection, Sperian's mission is to provide men and women with the best possible protection against all types of hazards in the workplace.



In this product guide we have compiled the information you need to better understand your respiratory protection needs and to select the best range of products for your application. Product information is also available on our web site: www.Survivair.com.

Sperian – Protection you can trust

SUPPLIED AIR RESPIRATORS (SAR)

Supplied Air Respirators

At Sperian Respiratory Protection, we understand your need for interchangeable respiratory products and systems. We provide a comprehensive line of respiratory protection equipment, with an emphasis on products that convert easily for specific applications. Stated simply, we meet more workers' needs with less inventory. The fully interchangeable components deliver the highest level of performance and significant cost savings. Our continuous flow Full Facepiece and Half Mask convert to Air Purifying Respirators.

Sperian Constant Flow Supplied Air Respirators (CF-SAR)

Features numerous facepiece alternatives
Sperian's Continuous Flow Supplied Air Respirators represent a highly cost-effective solution for respiratory protection in non-IDLH environments. Numerous facepiece alternatives are available, the Survivair Opti-Fit™ full facepiece is available in three sizes, with a side mounted tube or front mounted tube. All hoses and couplings are durable and efficient. The Survivair standard CF-SAR system utilizes the current Survivair Opti-Fit full facepiece and the 2000/Blue 1™ half masks. The Survivair W4K CF-SAR (previously branded Willson®) utilize the Willson 8600 full facepiece and the 6000 half mask. Whatever your environment dictates Sperian's versatile Continuous Flow Supplied Air Respirators provide maximum protection and value.

Ambient Air Pumps (AABA)

AABA pumps provide clean, breathable air into a supplied air respirator or hood. They are designed to provide portable air when a compressor may not be needed or available. Typical applications include spray painting and cleaning of chemicals or hazardous materials.



Sperian Travel Panel



50MP Portable Air Filtration System

The Sperian TravelPanel 50mp is a portable air filtration system designed to purify compressed breathing air by removing water, oil, and particulates as small as 0.01 microns, organic substances and odors, to provide Grade-D breathing air for 1 to 4 workers using supplied air respirators. The TravelPanel 50mp can supply 50 cubic feet per minute (CFM) of purified air and regulates the outlet pressure to comply with NIOSH requirements for your respirator. An incorporated MultiPro™ gas detector monitors the air for CO (carbon monoxide) and the optional O2 sensor can also monitor the oxygen level. The MultiPro offers blackbox recording, calibration reminder and one button automatic calibration as standard features, all within the TravelPanel's durable housing. Additional TravelPanel 50mp accessories include: built-in locking stabilizer legs, a bright red LED strobe, low pressure alarm, a choice of alkaline or rechargeable batteries and a choice of Hansen or Schrader outlet fittings.

Ordering Information

54-50-abcdef TravelPanel 50MP with standard accessories.

For code breakdown for ABCDE see Options below.

- A = 1 CO
3 CO and O2
- B = 0 No Options
1 LED Strobe Light
2 Locking Stabilizer Legs
3 Both
- C = 0 No Option
1 Low Pressure Alarm
- D = N Rechargeable
A Alkaline*
- E = H Hansen outlet fitting
S Schrader outlet fitting
- F = 0 No Options
1 MultiPro with Full Datalogging Option
2 Dust Covers
3 Both

54-50-331nh

Travel Panel 50MP with CO/O2 sensors, LED Strobe Light, Locking Stabilizer Legs, Low Pressure Alarm, Rechargeable Battery, and Hansen Outlet Fittings

54-50-100nh

Hansen Outlet Fittings

54-50-100ns

Schrader Outlet Fittings

VORTEX COOLERS / SAR PRE-PACKAGED SYSTEMS



Vortex Cooler/Personal Air Cooler

Vortex Coolers keep workers comfortable while reducing heat

For use with Survivair and W4K CF-SAR systems

- Reduces hot and humid ambient air by as much as 30° F (17° C)
- Survivair CF-SAR requires a minimum of 55-60 psi to operate
- Survivair W4K CF-SAR requires a minimum of 40 psi to operate
- NIOSH-approved
- No moving or electrical parts to break or repair

Ordering information:

981847 Survivair® Standard Vortex Cooler Assembly

14900724 Survivair W4K Personal Air Cooler

Vortex coolers are not compatible with Survivair Ambient Air Pumps or Pressure Demand SARs

Standard SAR Pre-Packaged AABA Systems

Survivair Opti-Fit™ SAR 1 Person

Comes with 1 facepiece set-up, 50' hose, 1/4 hp pump and couplings

981442 Survivair Opti-Fit SAR | One-Person
1/4 hp Pump, Medium

Survivair Opti-Fit SAR 1-2 Person

Comes with 1 facepiece set-up, 50' hose, 3/4 hp, 2 person pump and couplings

981452 One Opti-Fit SAR | One-Person/
Two-Person 3/4 hp Pump, Medium

Survivair Opti-Fit SAR 2 Person

Comes with 2 facepiece set-up's, 2-50' hose, 3/4 hp, 2 person pump and couplings

981462 Two Survivair Opti-Fit SARs |
Two-Person 3/4 hp Pump, Medium

Survivair SAR Hood 1 Person

Comes with 1 facepiece set-up, 50' hose, 3/4 hp pump and couplings

981852 Full SAR Hood | One-Person
3/4 hp Pump

Survivair Blue 1 SAR 1 Person

Comes with 1 facepiece set-up, 50' hose, 1/4 hp pump and couplings

981342 One Blue 1 SAR | One Person
1/4 hp Pump, Medium



DISPOSABLE
RESPIRATORS

REUSABLE
RESPIRATORS

CARTRIDGES AND
FILTERS

WELDING
SOLUTIONS

ESCAPE
SOLUTIONS

PAPR

SAR

SCBA

FIT TEST KITS &
ADAPTERS

ACCESSORIES

SURVIVAIR® CONSTANT FLOW SUPPLIED AIR SYSTEMS – AMBIENT AIR PUMPS

Ordering a CF-SAR AABA Pump System is easy and customizable! Choose 1 from each of the following sections:

1 Choose a Respirator



Survivair Opti-Fit CF-SAR Full Facepiece

Survivair Opti-Fit™ 5-pt.Strap Full Facepiece, Front Port w/rubber breathing tube, Small | Medium | Large

981500/ 981501/ 981503

Survivair Opti-Fit™ Full Facepiece, Mesh Headnet, Front Port w/rubber breathing tube, Small | Medium | Large

981550/ 981551/ 981553

Survivair Opti-Fit™ Full Facepiece, 5-pt.Strap, Side Port w/rubber breathing tube, Small | Medium | Large

981400/ 981401/ 981403

Survivair Blue 4000 CF-SAR Full Facepiece

Survivair Blue 4000 4-Pt. Strap Full Facepiece, Small | Standard Size

981212/ 981200

Survivair Blue 4000 4-Pt. Strap Full Facepiece and P100 Egress, Small | Standard Size

981214/ 981204

Survivair Black 4000 5-Pt. Strap Full Facepiece Full Facepiece for Welding, Small | Standard Size

981292/ 981290

Survivair Blue 1/2000 CF-SAR Half Mask

Survivair Blue 1™ Half-Mask, Small | Medium | Large

981310/ 981300/ 981320

Survivair 2000 Half-Mask, Small | Medium | Large

981379/ 981380/ 981381

Survivair CF-SAR Hoods

Hood with Polyester Lens, Single Bib, Knit Collar, Breathing Tube

981820

Hood with Polyester Lens, Single Bib, Knit Collar, Plastic Breathing Tube, Ratchet Suspension

981840

Single Bib Hood Replacement (3/box)

981812

2 Choose OBAC Male Plug (respirator connection)

Order 1 for each respirator



OBAC Male Plug

985247

3 Choose Hose Length – 25' / 50' / 100'

Max = 100' or 2 Hose Lengths



25 Foot Hose with OBAC Couplings for Ambient Air Pumps

985241

50 Foot Hose with OBAC Couplings for Ambient Air Pumps

985242

100 Foot Hose with OBAC Couplings for Ambient Air Pumps

985244

4 Choose AABA Pump



1/4 Horsepower Pump (Operates 1 Tight-Fitting Facepiece)

985210

3/4 Horsepower Pump (Operates 1 Hood or 2 Tight-Fitting Facepieces)

985200

1-1/2 Horsepower Pump (Operates 3 Hoods or 4 Tight-Fitting Facepieces)

985225

SURVIVAIR CONSTANT FLOW SUPPLIED AIR SYSTEM – GRADE D BREATHING AIR

Ordering a CF-SAR System is easy and customizable! Choose 1 from each of the following sections:

1 Choose a Respirator



Survivair Opti-Fit CF-SAR Full Facepiece	
Survivair Opti-Fit™ 5-pt.Strap Full Facepiece, Front Port w/rubber breathing tube, Small Medium Large	981400/ 981401/ 981403
Survivair Opti-Fit™ Full Facepiece, 5-pt.Strap, Side Port w/rubber breathing tube, Small Medium Large	981500/ 981501/ 981503
Survivair Blue 4000 CF-SAR Full Facepiece	
Survivair Blue 4000 4-Pt. Strap Full Facepiece, Small Standard Size	981212/ 981200
Survivair Blue 4000 4-Pt. Strap Full Facepiece and P100 Egress, Small Standard Size	981214/ 981204
Survivair Black 4000 5-Pt. Strap Full Facepiece Full Facepiece for Welding, Small Standard Size	981292/ 981290
Survivair Blue 1/2000 CF-SAR Half Mask	
Survivair Blue 1™ Half-Mask, Small Medium Large	981310/ 981300/ 981320
Survivair 2000 Half-Mask, Small Medium Large	981379/ 981380/ 981381
Survivair CF-SAR Hoods	
Hood with Polyester Lens, Single Bib, Knit Collar, Breathing Tube	981820
Hood with Polyester Lens, Single Bib, Knit Collar, Plastic Breathing Tube, Ratchet Suspension	981840
Single Bib Hood Replacement (3/box)	981812

2 Choose Male Plug (respirator connection)

Coupling kit type must remain same through out the CF-SAR System



Schrader Male Plug	930433
Hansen Male Plug	930466
Foster Male Plug	930429
OBAC Male Plug	985247

3 Choose Hose Length – 25' / 50' / 100'

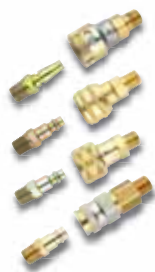
Max = 300' or 3 Hose Lengths



Hoses without OBAC Fittings		Hoses with OBAC Fittings	
3/8" Standard Pressure 25'	930801	25 Foot Hose with OBAC Couplings for Ambient Air Pumps	985241
3/8" Standard Pressure 50'	930802	50 Foot Hose with OBAC Couplings for Ambient Air Pumps	985242
3/8" Standard Pressure 100'	930804	100 Foot Hose with OBAC Couplings for Ambient Air Pumps	985244
3/8" High Performance 10'	930870		
3/8" High Performance 25'	930861		
3/8" High Performance 50'	930862		
3/8" High Performance 100'	930864		

4 Choose Coupling Set

1 female and 1 male for hose interconnection (only for Non-OBAC Systems)



Schrader Kit (includes 1 male & 1 female fitting)	930820
Schrader Female Coupling	930437
Schrader Male Plug	930433
Hansen Kit (includes 1 male & 1 female fitting)	930830
Hansen Female Coupling	930465
Hansen Male Plug	930466
Foster Kit (includes 1 male & 1 female fitting)	930810
Foster Female Coupling	930424
Foster Male Plug	930429
OBAC Kit (includes 1 male & 1 female fitting)	930840
OBAC Female Coupling	985248
OBAC Male Plug	985247

5 Choose Female Coupling (air source connection)

Coupling kit type must remain same through out the CF-SAR System



Schrader Female Coupling	930437
Hansen Female Coupling	930465
Foster Female Coupling	930424
OBAC Female Coupling	985248



DISPOSABLE
RESPIRATORS

REUSABLE
RESPIRATORS

CARTRIDGES AND
FILTERS

WELDING
SOLUTIONS

ESCAPE
SOLUTIONS

PAPR

SAR

SCBA

FIT TEST KITS &
ADAPTERS

ACCESSORIES

SURVIVAIR W4K CONSTANT FLOW SUPPLIED AIR SYSTEM – AMBIENT AIR PUMPS

Ordering a W4K CF-SAR AABA Pump System is easy and customizable! Choose 1 from each of the following sections:

1 Choose a Respirator



CF-SAR Tight Fitting Full Facepiece Mask

8600 Full Facepiece w/Tite Seal, Schrader Fitting, Small | Medium | Large
8600 Full Facepiece w/5-pt. Strap, Schrader Fitting, Small | Medium | Large

14320151/ 14320152/ 14320153
14320148/ 14320149/ 14320150

CF-SAR Tight Fitting Half-Mask Facepiece

Premier Half-Mask, Schrader Fitting, Small | Medium | Large

14310042/ 14310043/ 14310044

CF-SAR Loose Fitting Hoods

Acetate Lens with Single Bib, Standard Suspension and No Fitting, Plastic Breathing Tube
Acetate Lens with Double Bib, Ratchet Suspension and No Fitting, Plastic Breathing Tube
Acetate Lens with Single Bib, Standard Suspension and Schrader Fitting, Plastic Breathing Tube
Acetate Lens with Double Bib, Ratchet Suspension and Schrader Fitting, Plastic Breathing Tube
Acetate Lens with Double Bib, Ratchet Suspension, Personal Air Cooler and Schrader Fitting, Plastic Breathing Tube
Polyester Lens with Double Bib, Ratchet Suspension and Schrader Fitting, Plastic Breathing Tube
Replacement Hood, Single Bib, Acetate

14510028
14510021
14510004
14510019
14510027
14510025
14900409

2 Choose Schrader Male Plug (respirator connection)

If ordered respirator with fitting, do not need to order additional male plug.
Order 1 for each respirator. Coupling Kit must be the same through CF-SAR System



Schrader Male Plug

14900357

3 Choose Hose Length – 25' / 50' / 100'

Max = 100' or 2 Hose Lengths



3/8" Hose with Schrader Fitting | 25'
3/8" Hose with Schrader Fitting | 50'
3/8" Hose with Schrader Fitting | 100'
1/2" Hose with Schrader Fitting | 50'
1/2" Hose with Schrader Fitting | 100'

14900185
14900186
14900188
14900503
14900417

4 Choose Schrader Female Coupling



Schrader Female Coupling

930437

5 Choose AABA Pump



1/4 Horsepower Pump (Operates 1 Tight-Fitting Facepiece)
3/4 Horsepower Pump (Operates 1 Hood or 2 Tight-Fitting Facepieces)
1-1/2 Horsepower Pump (Operates 3 Hoods or 4 Tight-Fitting Facepieces)

985210
985200
985225

SURVIVAIR W4K CONSTANT FLOW SUPPLIED AIR SYSTEM – GRADE D BREATHING AIR

Ordering a W4K CF-SAR System is easy and customizable! Choose 1 from each of the following sections:

1 Choose a Respirator

For Schrader type systems, order facepiece with Schrader fittings



CF-SAR Tight Fitting Full Facepiece Mask	
8600 Full Facepiece w/Tite Seal, Schrader Fitting, Small Medium Large	14320151/ 14320152/ 14320153
8600 Full Facepiece w/5-pt. Strap, Schrader Fitting, Small Medium Large	14320148/ 14320149/ 14320150
CF-SAR Tight Fitting Half-Mask Facepiece	
Premier™ Half-Mask, Schrader Fitting, Small Medium Large	14310042/ 14310043/ 14310044
CF-SAR Loose Fitting Hoods	
Acetate Lens with Single Bib, Standard Suspension and No Fitting, Plastic Breathing Tube	14510028
Acetate Lens with Double Bib, Ratchet Suspension and No Fitting, Plastic Breathing Tube	14510021
Acetate Lens with Single Bib, Standard Suspension and Schrader Fitting, Plastic Breathing Tube	14510004
Acetate Lens with Double Bib, Ratchet Suspension and Schrader Fitting, Plastic Breathing Tube	14510019
Acetate Lens with Double Bib, Ratchet Suspension, Personal Air Cooler and Schrader Fitting, Plastic Breathing Tube	14510027
Polyester Lens with Single Bib, Hard Hat and Schrader Fitting, Plastic Breathing Tube	14510030
Polyester Lens with Double Bib, Ratchet Suspension and Schrader Fitting, Plastic Breathing Tube	14510025
Replacement Hood, Single Bib, Acetate	14900409

2 Choose Male Plug (respirator connection) only for non-Schrader type systems

Coupling kit type must remain same through out the CF-SAR System



Schrader Male Plug	14900357
Hansen Male Plug	14900532
Industrial Interchange Male Plug	14900530
Snap Tite Male Plug	14900537

3 Choose Hose Length – 25' / 50' / 100'

Max = 300' or 3 Hose Lengths



Hoses with Schrader Fittings		Hoses without Schrader Fittings	
3/8" Hose with Schrader Fitting 25'	14900185	3/8" Hose with MPT 25'	14900743
3/8" Hose with Schrader Fitting 50'	14900186	3/8" Hose with MPT 50'	14900744
3/8" Hose with Schrader Fitting 100'	14900188		
1/2" Hose with Schrader Fitting 50'	14900503		
1/2" Hose with Schrader Fitting 100'	14900417		

4 Choose Coupling Set

1 male and 1 female for hose interconnection (only for non-Schrader type systems)
Coupling kit type must remain same through out the CF-SAR System



Schrader		
Schrader Female Coupling		14900521
Schrader Male Plug		14900524
Hansen		
Hansen Female Coupling		14900538
Hansen Male Plug		14900531
Industrial Interchange		
Industrial Interchange Female Coupling		14900519
Industrial Interchange Male Plug		14900517
Snap Tite		
Snap Tite Female Coupling		14900535
Snap Tite Male Plug		14900536

5 Choose Female Coupling (air source connection)

Order 1 for each air source connection



Schrader Female Coupling	14900521
Hansen Female Coupling	14900538
Industrial Interchange Female Coupling	14900519
Snap Tite Female Coupling	14900535



DISPOSABLE
RESPIRATORS

REUSABLE
RESPIRATORS

CARTRIDGES AND
FILTERS

WELDING
SOLUTIONS

ESCAPE
SOLUTIONS

PAPR

SAR

SCBA

FIT TEST KITS &
ADAPTERS

ACCESSORIES

SUPPLIED AIR RESPIRATORS (SAR) – PRESSURE DEMAND

Survivair Pressure Demand (PD) Supplied Air Respirators and Hip-Pacs provide the highest level of interchangeability, protection, and ease of operation.

- Full Facepiece PDA SARs offer the simplicity and reliability of Panther® mask-mounted regulators
- Hip-Pacs enhance protection in environments immediately dangerous to life or health (IDLH), with 5-, 10-, or 15-minute escape cylinders
- Panther PD SARs and Hip-Pacs provide significant cost savings and convenience as part of fully interchangeable respirator systems



TIGHT-FITTING PRESSURE DEMAND SAR

Ordering Information

Panther Series, Mask-Mounted Regulator

- P968446** Full Facepiece, No Coupling TC - 19C - 302 (Small)
P968445 Full Facepiece, No Coupling TC - 19C - 302 (Medium)
P968447 Full Facepiece, No Coupling TC - 19C - 302 (Large)
P968435 Full Facepiece, with P100, No Coupling, TC - 84A - 0229 (Classic)
P968437 Full Facepiece, Black (Welding), with P100 Escape, No Coupling, TC - 84A - 0229 (Classic)

Optional: also available with the Puma hood.

Panther Series, Mask-Mounted Regulator, with Emergency Escape

- P968455** Panther Hip-Pac, with 5-Minute Escape (2216 psig, Aluminum), with Quick-Disconnect, No Coupling, TC - 13F - 300
P968457 Panther Hip-Pac, with 5-Minute Escape (2216 psig, Aluminum), without Quick-Disconnect, No Coupling, TC - 13F - 300
P968475 Panther Hip-Pac, with 10-Minute Escape (3000 psig, Aluminum), with Quick-Disconnect, No Coupling, TC - 13F - 301
P968477 Panther Hip-Pac, with 10-Minute Escape (3000 psig, Aluminum), without Quick-Disconnect, No Coupling, TC - 13F - 301
P968605 Panther Hip-Pac, with 10-Minute Escape (4500 psig, Fully Wrapped Carbon), with Quick-Disconnect, No Coupling, TC - 13F - 482
P968615 Panther Hip-Pac, with 10-Minute Escape (4500 psig, Fully Wrapped Carbon), with Quick-Disconnect, No Coupling, with COMPASS Integrated PASS Device, with Buddy Breather, TC - 13F - 482
P968500 Panther Hip-Pac, with 15-Minute Escape (3000 psig, Hoop-Wrapped Fiberglass), with Quick-Disconnect, No Coupling, TC - 13F - 307

Panther Series, Pressure Demand SAR and Hip-Pac Upgrade and Conversion Kits

- P968452** Panther 5-Minute SCBA Conversion Kit (Hip-Pac without Facepiece and Regulator, with Quick-Disconnect), No Coupling
P968453 Panther 5-Minute SAR Upgrade Kit (to Convert Pressure Demand SAR to Hip-Pac)
P968472 Panther 10-Minute SCBA Conversion Kit (Hip-Pac Aluminum Cylinder, without Facepiece and Regulator, with Quick-Disconnect), No Coupling
P968473 Panther 10-Minute SAR Upgrade Kit (to Convert Pressure Demand SAR to Hip-Pac)
P968540 Panther 15-Minute SCBA Conversion Kit (Hip-Pac, without Facepiece and Regulator, with Quick-Disconnect), No Coupling
P968535 Panther 15-Minute SAR Upgrade Kit (to Convert Pressure Demand SAR to Hip-Pac)

Spare Hip-Pac Cylinders

- 975081** Spare Cylinder (2216 psig, Aluminum), 5-Minute Hip-Pac
975154 Spare Cylinder (3000 psig, Aluminum), 10-Minute Hip-Pac
917250 Spare Cylinder (4500 psig, Fully Wrapped Carbon), 10-Minute Hip-Pac
968513 Spare Cylinder (3000 psig, Hoop-Wrapped Fiberglass), 15-Minute Hip-Pac

Conversion Kits for XL-Style Hip-Pacs to Panther Hip-Pacs

- P968454** Panther Hip-Pac without Cylinder, with Quick-Disconnect, No Coupling
P968459 Panther Hip-Pac without Cylinder, without Quick-Disconnect, No Coupling

AIR LINE COUPLING HARDWARE

Ordering Information

Air Line Coupling Kits and Individual Couplings

- 930810** Foster Kit (1 Each, Male and Female)
930424 Foster Coupling
930429 Foster Plug
930820 Schrader Kit (1 Each, Male and Female)
930437 Schrader Coupling
930433 Schrader Plug
930830 Hansen Kit (1 Each, Male and Female)
930465 Hansen Coupling
930466 Hansen Plug
945007 Hansen Kit - Stainless Steel (1 Each, Male and Female)
945010 Hansen Stainless Steel Coupling
945011 Hansen Stainless Steel Plug

AIR LINE HOSE

Ordering Information

Lightweight 3/8" Hose

- 930801** 25-Foot Hose without Couplings
930802 50-Foot Hose without Couplings
930804 100-Foot Hose without Couplings

High Performance 3/8" Hose

- 930870** 10-Foot Hose without Couplings
930861 25-Foot Hose without Couplings
930862 50-Foot Hose without Couplings
930864 100-Foot Hose without Couplings

STANDARD ACCESSORIES

Ordering Information

- 951015** Anti-Fog Solution (1 Ounce)
951016 Anti-Fog Solution (16 Ounce)
962900 APR Adapter/Qualitative Fit Test Adapter, Pressure Demand SAR (No Nose Cup Included) - TwentyTwenty/TwentyTwenty Plus Facepiece
962911 APR Adapter/Qualitative Fit Test Adapter, Pressure Demand SAR (Slotted Medium Nose Cup Included) - TwentyTwenty/TwentyTwenty Plus Facepiece
962912 APR Adapter/Qualitative Fit Test Adapter, Pressure Demand SAR (Slotted Standard Nose Cup Included) - Classic Facepiece
962913 APR Adapter/Qualitative Fit Test Adapter, Pressure Demand SAR (Slotted Large Nose Cup Included) - Classic Facepiece
B140096 Facepiece Cleaner Box (100 each)
140082 Facepiece Cleaner Canister (220 each)
966065 Hip-Pac Bag
966027 Hip-Pac Carrying Case (All Models)
B140095 Lens Cover (25 each) - Classic Facepiece
702028 Lens, Cover, Clear)25 each) - TwentyTwenty Plus Facepiece
941899 Probed Full Facepiece Lens Kit - Classic Facepiece
962253 Probed Full Facepiece Lens Kit - TwentyTwenty Facepiece
962262 Probed Full Facepiece Lens Kit - TwentyTwenty Plus Facepiece
962920 Quantitative Fit Test Adapter, Panther-Style Pressure Demand SAR (Requires) 962900/11/12
995605 SAR Video
941107 Spectacles Kit - XL - Style Facepiece
980003 Spectacles Kit - Classic Facepiece
962260 Spectacles Kit - TwentyTwenty/TwentyTwenty Plus Facepiece
980200 Suit Pass-Through Kit
940118 Zipper Facepiece Bag

SUPPLIED AIR SYSTEMS ACCESSORIES/CASCADE SYSTEM

AIR CART

Used as either a primary air source or an emergency air supply, the Survivair Air Cart can contain up to two independently operating 30, 45, or 60-minute high pressure (4500 psig) cylinders, or up to two independently operating 30-minute low pressure (2216 psig) cylinders. An inlet allows a regulated air source to be used with an optional bypass to allow an unregulated air source. The built-in manifold allows up to five Foster, Hansen, or Schrader quick-disconnect couplings to supply air for up to five workers. A built-in low air warning whistle sounds at 550 psig.



Ordering Information

Low Pressure (2216 psig)

731200 Without Cylinders, Without Fittings

731240 High Pressure Bypass

Note: Quick-Disconnect Sold Separately

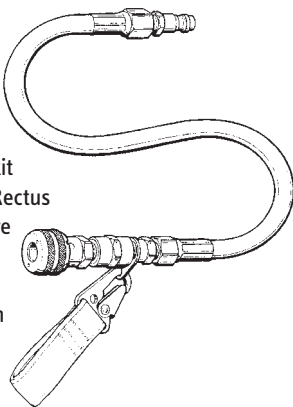
High Pressure (4500 psig)

731250 Without Cylinders, Without Fittings

731245 High Pressure Bypass

SAR ATTACHMENT KIT FOR 1997-STYLE PANTHER AND COUGAR/PUMA SCBA'S

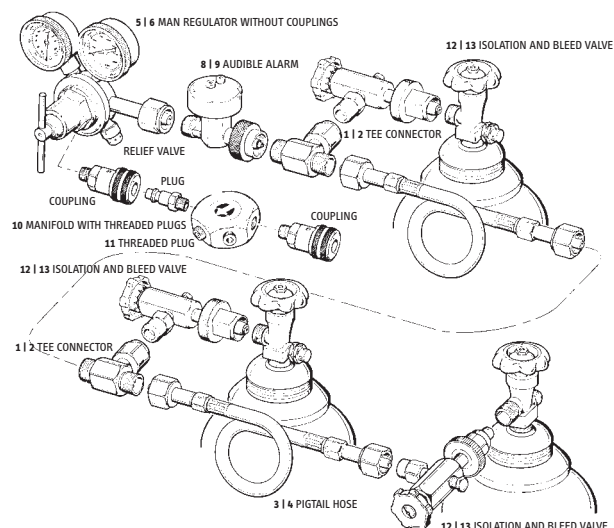
This kit enables Survivair Panther SCBA users to utilize supplied air sources easily and conveniently. The kit contains: a short pigtail hose with a Rectus male connector on one end and a bare opposite end (for use with Foster, Schrader, or Hansen quick-disconnect couplings); a strap and retainer which attach to the Survivair Panther waist strap to hold the pigtail and incoming hose line; and a check valve which mounts onto the buddy breathing adapter block. The kit requires the prior installation of a Survivair Panther buddy breathing kit (961148). The 965122 SAR attachment kit is available for the 2002-style Panther SCBA.



Ordering Information

961800 Supplied Air Attachment Kit, 1997-Style Panther/Cougar/Puma SCBA

965122 Supplied Air Attachment Kit, 2002-Style Panther SCBA



CASCADE SYSTEM

A Cascade System consists of at least two storage cylinders interconnected by a series of couplings and pigtails. Compressed and purified Grade "D" (minimum) air stored in the cylinders is drawn off through a pressure reducing regulator and supplied to the SAR system at the required pressure level. A manifold can be used when supplying air for two or more workers. A central filling station, typically located next to the storage cylinders, can provide the compressed and purified air to the cylinders in the Cascade System.

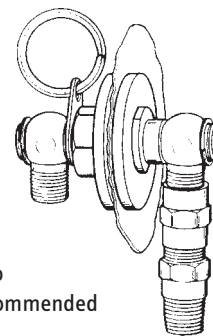
Ordering Information

Cascade System Components

- 238010** Tee Connection, CGA 346 (3000 psi maximum)
- 238009** Tee Connection, CGA 346 (5500 psi maximum)
- 731158** Pigtail Hose, CGA 346 to CGA 347 (3000 psi maximum)
- 731157** Pigtail Hose, CGA 346 to CGA 347 (5500 psi maximum)
- 912005** 5-Man Regulator without Couplings (3000 psi maximum)
- 731020** 5-Man Regulator without Couplings (5500 psi maximum)
- 960020** Relief Valve
- 960603** Audible Alarm, CGA 346LP
- 960642** Audible Alarm, CGA 347HP
- 960050** Manifold with Threaded Plugs
- 960056** Threaded Plug
- 731012** Isolation or Bleed Valve (3000 psi maximum)
- 731013** Isolation or Bleed Valve (6000 psi maximum)

SUIT PASS-THROUGH KIT

This NIOSH-certified fitting safely supplies air to Class A chemical suits, keeping out contaminants while allowing a quick disconnect if escape is necessary. The pass-through can be used with Foster or Schrader quick-disconnect couplings. It is constructed of stainless steel and brass components to give it maximum resistance to corrosive chemicals. The pass-through is recommended for use with suits of .020" to .080" thickness.



Ordering Information

980200 Suit Pass-Through Kit



DISPOSABLE
RESPIRATORS

REUSABLE
RESPIRATORS

CARTRIDGES AND
FILTERS

WELDING
SOLUTIONS

ESCAPE
SOLUTIONS

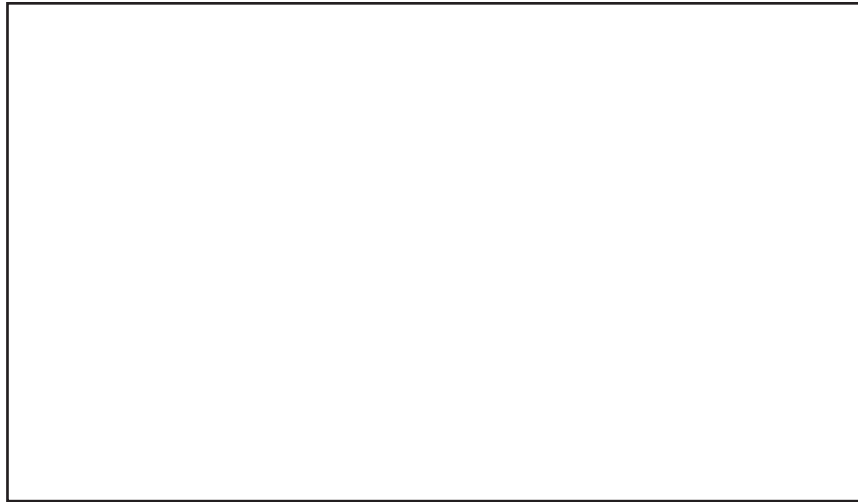
PAPR

SAR

SCBA

FIT TEST KITS &
ADAPTERS

ACCESSORIES



SPERIAN Respiratory Protection USA, LLC
3001 South Susan Street
Santa Ana, CA 92704 USA
Customer Care 800.821.7236
www.survivair.com



WARNING: This document provides only an overview of the respiratory products shown. It does not provide important product warnings and instructions. Sperian recommends all users of respiratory equipment undergo thorough training and that all warnings and instructions provided with the products be thoroughly read and understood prior to use. Failure to read and follow all product warnings and instructions may result in serious personal injury, illness or death.

©Sperian 2009