



# WESTCHESTER

PROTECTIVE GEAR

GLOVES | RAINWEAR | APPAREL

# **GEAR UP**

## **WITH WEST CHESTER PROTECTIVE GEAR**

Since 1978, West Chester Protective Gear has provided market leading solutions that improve the performance and safety of workers on the job and at home.

From gloves to rainwear to disposable clothing, West Chester offers a wide range of quality products to meet every protection need.

West Chester's operating philosophy is built on service, quality, innovation, and value. Our highly experienced sales and operations teams are flexible and responsive, providing innovative solutions that fit customer needs.

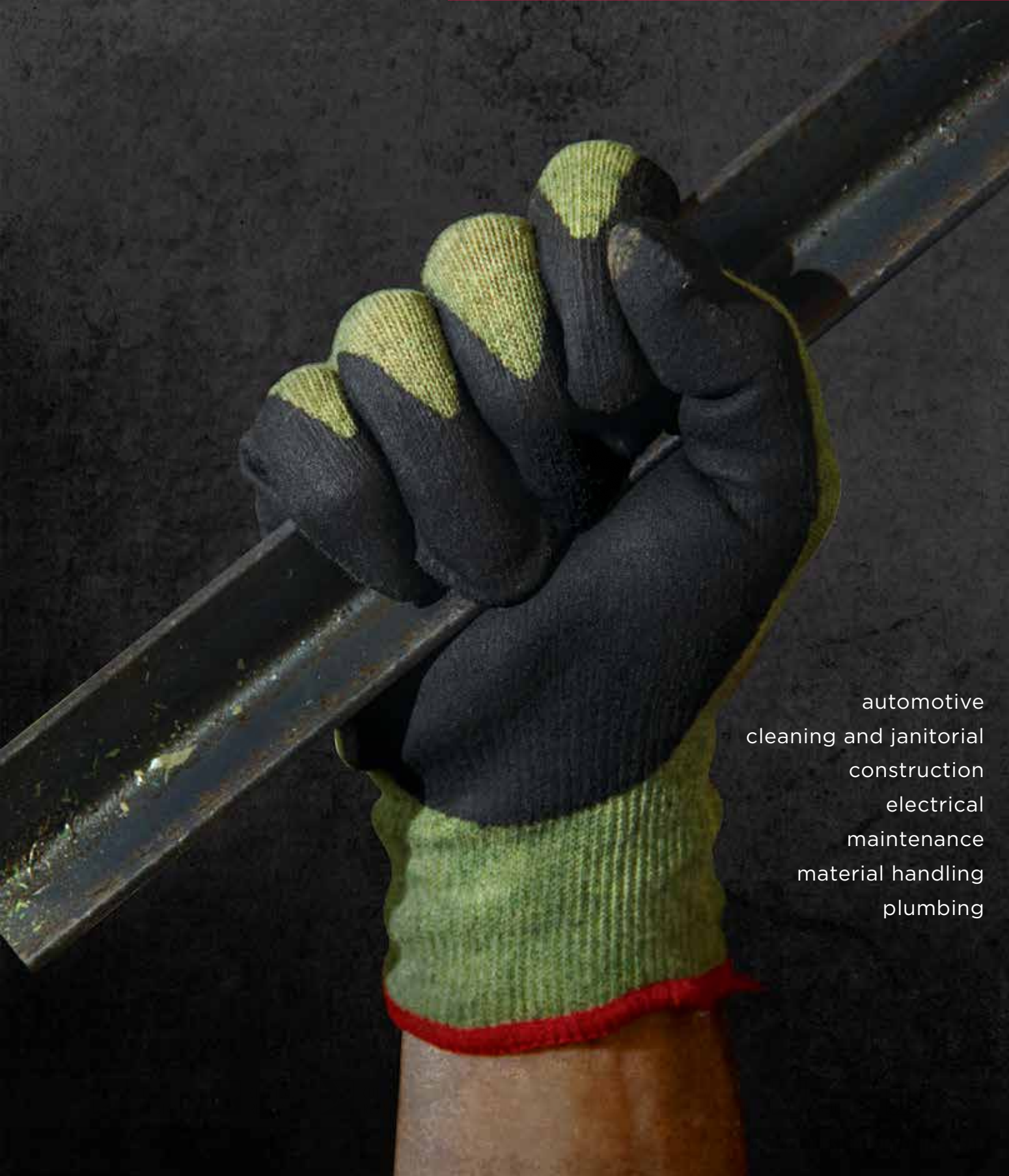
Customers depend on West Chester as a trusted partner for branded, direct import, and private label solutions. As a global provider offering vast experience and continuing innovation in product design, sourcing and logistics, West Chester consistently delivers the right products at the right value with guaranteed on-time delivery.

To discuss how West Chester Protective Gear can serve your needs, contact our knowledgeable staff at 800-647-1900 or visit [www.westchestergear.com](http://www.westchestergear.com).



	<b>3 DIPPED GLOVES</b>		<b>54 CHEMICAL RESISTANT</b>
	5 Nitrile		56 PVC
	8 Nitrile/Special		59 Nitrile & Neoprene
	9 Polyurethane		61 Latex
	11 Latex		62 Vinyl
			63 Disposable Gloves
	<b>12 CUT RESISTANT</b>		<b>66 DISPOSABLE CLOTHING</b>
	14 Zone Defense		68 Posiwear®
	15 Ansi 5 & 4		75 PE Laminated/Coated
	16 Ansi 3		76 Microporous
	17 Ansi 2		77 Heavyweight Polypropylene
			78 Standard Weight Polypropylene
			80 Bouffants/ Beard Covers
	<b>19 LEATHER</b>		<b>81 RAINWEAR</b>
	22 Welding		82 Rain Suits
	27 Premium Leather Palms		83 Boots
	28 Drivers		
	32 Leather Palm		<b>84 WELDING APPAREL</b>
	<b>38 HIGH DEXTERITY</b>		85 Leather Apparel
	39 R2 Series		86 Fr Cotton Apparel
	41 Pro Series		<b>87 APRONS/SLEEVES</b>
	<b>43 COTTON/STRING</b>		88 Aprons
	44 String Knits		89 Sleeves
	47 Jersey		
	48 Canvas		<b>90 INDEX</b>
	50 Corded Palm		94 Chemical Resistance Guide
	51 Double Palm		
	53 Hotmill		

# DIPPED GLOVES



automotive  
cleaning and janitorial  
construction  
electrical  
maintenance  
material handling  
plumbing

## DIPPED GLOVES

Dipped glove popularity has increased due to the unparalleled tactile sensitivity and form-fitting design that still protects the wearer from workplace hazards. The shell of the glove is typically a knitted material such as nylon that fits close to the hand for maximum flexibility. Various coatings are then applied for use in a variety of applications.

### Common coatings include:

**Nitrile:** A thinner coating that improves dexterity and tactility. Provides tough protection against petrochemicals, solvents, oils and greases. Excellent resistance from abrasion and snags. Available in a variety of types to meet your needs: foam, sponge and flat.

**Polyurethane:** The thinnest coating available for excellent dexterity. Incredibly tough, yet flexible and comfortable. Very good dry and oil gripping abilities.

**Latex:** Typically the thickest of coatings and therefore provides enhanced separation from hazard. Offers economical durability, very good abrasion and good grip in dry conditions.

**PVC/Bi-Polymer:** A durable and flexible coating for both dry and wet grip. Limited chemical and heat resistance.

COATINGS	Dry Grip	Wet Grip	Oil Grip	Abrasion Resistance	Tactility	Comfort	Permeability	Cost
<b>NITRILE</b>								
<b>FLAT</b> Smooth, non-porous coating which provides high chemical and abrasion resistance.	E	F	F	E	VG	VG	L	\$\$
<b>SPONGE</b> Flexible, porous and tacky coating for better grip. Slow water permeation.	E	VG	VG	VG	G	G	M	\$\$\$
<b>FOAM</b> Flexible, thin, porous coating. Fast water permeation for excellent grip. Draws liquid away from surface. Breathable.	G	E	E	G	VG	VG	H	\$\$\$
<b>POLYURETHANE</b>								
Strong, durable, lightweight and breathable. Provides flexibility and high resistance to abrasion.	VG	G	VG	VG	E	E	H	\$\$
<b>LATEX</b>								
Flexible and comfortable. Less resistant to abrasion, tearing or cutting. Provides resistance to heat.	VG	F	F	VG	F	F	L	\$
<b>BI-POLYMER</b>								
Flexible, thin, lightweight. High permeability and breathability. Low resistance to abrasion.	VG	E	E	F	G	VG	H	\$\$\$

E = Excellent VG = Very Good G = Good F = Fair H = High M = Medium L = Low \$\$\$ = Premium \$\$ = Standard \$ = Value



## FLEXIBILITY, BREATHABILITY, AND COMFORT!

Our flexible, palm-coated foam nitrile glove, uses micro capillaries to enhance oil grip, breathability and comfort.

### 715SNFTP

S-2XL

- EN 388 = 4141
- Oeko-Tex Standard 100
- Microfoam nitrile



### 715SNFTP

S-2XL

- EN 388 = 4141
- Microfoam nitrile
- Nylon shell



### 715SNFTK

S-2XL

- EN 388 = 4141
- Microfoam nitrile
- Nylon shell



### 715SNFTKD

S-2XL

- EN 388 = 4141
- Microfoam nitrile
- Dotted palm
- Nylon shell

## MICROFOAM

Utilizing a patent-pending micro-channel nitrile coating, Microfoam Performance Gloves move oil and water away from the palm of the hand and the outside surface of the glove. This prevents the hand from getting saturated and helps maintain grip. In addition, the coating far exceeds the standard for abrasion resistance.

The newest member of this family, the Microfoam Air Performance Gloves take breathability to the next level. These new gloves keep the hand cool and comfortable while maintaining the high abrasion standards of the original Microfoam Performance Gloves. In addition, the new Microfoam Air is Oeko-Tex level one certified.

Put these gloves to the test in the toughest, most abrasive jobs. Manufactured to the highest standards, this glove will outlast, out-grip and out-perform the competition. And, did we mention the fit? Awesome.



HEAT  
RESISTANT



CHEMICAL  
RESISTANT



CUT  
RESISTANT



IMPACT  
RESISTANT



FLAME  
RESISTANT



WATER  
RESISTANT



INSULATED



KEVLAR®



## HEAVY DUTY CUT PROTECTION IN A COMFORTABLE SHELL!

Kevlar® and steel shell provides ANSI Cut 5 protection while providing incredible comfort, durability, and dexterity.

### 710KSSN

S-2XL



- ANSI 5 cut level
- EN 388 = 3542
- Foam nitrile
- Kevlar® and steel shell



### HVY710HSNF

S-2XL



- ANSI 4 cut level
- EN 388 = 4542
- Foam nitrile
- HPPE shell



### 713KSSN

XS-2XL



- ANSI 4 cut level
- EN 388 = 4542
- Foam nitrile
- Kevlar® and steel shell
- Heat rating



### 710SANF

S-XL



- ANSI 4 cut level
- EN 388 = 4533
- Foam nitrile
- Aramid/polyamide shell



### 705CGNF

S-2XL



- ANSI 3 cut level
- EN 388 = 4542
- Foam nitrile
- HPPE shell
- Zone Defense Glove



### 730TBN

S-2XL



- ANSI 3 cut level
- EN 388 = 4542
- Nitrile
- Taeki 5® shell



### 703CONF

S-2XL



- ANSI 2 cut level
- EN 388 = 4343
- Foam nitrile
- HPPE shell
- Zone Defense Glove





**715SNFLW**

**XS-2XL**

- EN 388 = 3131
- Lunar foam nitrile
- Nylon shell



**715SNFLB**

**XS-2XL**

- EN 388 = 3131
- Lunar foam nitrile
- Nylon shell



**715SNFP**

**XS-XL**

- EN 388 = 4141
- Sponge nitrile
- Nylon shell



**715SNFB**

**S-2XL**

- EN 388 = 3132
- Foam nitrile
- Nylon shell



**701CRNF**

**M-XL**

- EN 388 = 3132
- Foam nitrile
- Nylon shell
- Zone Defense Glove



**710TSNF**

**S-2XL**

- EN 388 = 4122
- Flat nitrile
- Nylon shell
- Thermal lining
- Hook and loop closure



**713KSNF**

**XS-2XL**

- ANSI 2 cut level
- EN 388 = 4232
- Flat nitrile
- Kevlar® shell



**715SNFFB**

**S-2XL**

- EN 388 = 4121
- Flat nitrile
- Nylon shell



**713SNC**

**6-10**

- EN 388 = 4121
- Flat nitrile
- Nylon shell



HEAT RESISTANT



CHEMICAL RESISTANT



CUT RESISTANT



IMPACT RESISTANT



FLAME RESISTANT



WATER RESISTANT



INSULATED



KEVLAR®

**713SNF****S-2XL**

- EN 388 = 4121
- Foam nitrile
- Nylon shell

**715SBP****S-XL**

- EN 388 = 4131
- Bi-polymer
- Nylon shell
- Dotted palm

**713SPA****XS-2XL**

- EN 388 = 4131
- Air injected PVC
- Foam nitrile
- Nylon shell

## FREQUENTLY ASKED QUESTIONS

### 1. What's the difference between foam nitrile and sponge nitrile?

Foam nitrile is a very thin coating while sponge nitrile is slightly thicker. Both offer a tacky coating and good durability and less abrasion resistance than flat nitrile coating. Foam and sponge nitrile coating offer excellent grip with dry, wet, and oily applications. Both are flexible and porous. Foam nitrile will channel oil and water away from surface quickly (within 10 seconds) and sponge nitrile will also channel oil and water away but will take much longer.

### 2. Why use flat nitrile vs. polyurethane coating?

If you need a glove that has high resistance to abrasion and high resistance to chemicals and solvents, then flat nitrile is the type of glove to use. A flat nitrile coated glove is non-porous, less flexible and not breathable. If you need a glove that has an excellent dry, wet & oil grip with a flexible, breathable coating, then a polyurethane coated glove is the best choice. It is also porous and has high resistance to abrasion.

### 3. What type of coating is the best to use for dry and oil grip applications?

Polyurethane and Nitrile offer the best options when you need both dry and oil grip applications. Both polyurethane and nitrile allow flexibility which means an easier grip and dexterity during use. Nitrile has good water permeability that absorbs liquids in just seconds to provide better grip in wet applications.

### 4. What are the applications where flat/non-foam nitrile coated gloves can be used?

Automotive, assembly, food packing, furniture manufacturing, electronics, pesticides, oil refining. Safe for food contact.

### 5. What are the applications where foam/sponge nitrile coated gloves can be used?

Automotive, construction, material handling, engineering, assembly, inspection/examination. Safe for food contact but porous properties will allow bacteria to develop.

### 6. Why does a white foam-like substance come from my nitrile glove when I first get it wet?

During the process of manufacturing these gloves, washing them will increase their permeability. If they are not washed and only leached then a salt residue will be present on the surface which will hinder water permeability. With repeated washings, this residue should dissipate and the gloves should become even more permeable.



## TOUCHSCREEN COMBINED WITH ANSI CUT LEVEL 2 PROTECTION.

Leave 'em on! Don't sacrifice protection for function. HPPE fiber is 10x stronger than steel by weight, has high abrasion resistance, and incredible comfort. Touchscreen capabilities to be protected all day long.

### 713HUTS

S-2XL



- ANSI 2 cut level
- EN 388 = 4342
- Touchscreen fingertips
- Polyurethane
- HPPE shell



### 730TGU

XS-2XL



- ANSI 3 cut level
- EN 388 = 4542
- Polyurethane
- Taeki 5° shell



### 730TBU

S-2XL

- ANSI 3 cut level
- EN 388 = 4542
- Polyurethane
- Taeki 5° shell



### 718HSPU

S-2XL



- ANSI 3 cut level
- EN 388 = 3441
- Polyurethane
- Speckle blue 18 gauge HPPE shell



### 720DGU

S-2XL



- ANSI 2 cut level
- EN 388 = 4342
- Polyurethane
- Speckle gray HPPE shell



### 720DWU

S-2XL

- ANSI 2 cut level
- EN 388 = 4342
- Polyurethane
- HPPE shell



### 703COPB

S-2XL



- ANSI 2 cut level
- EN 388 = 4343
- Polyurethane
- HPPE shell
- Zone Defense Glove



## POLYURETHANE

**701CRPB****S-2XL**

- EN 388 = 4131
- Polyurethane
- Nylon shell
- Zone Defense Glove

**715SUGB****XS-2XL**

- EN 388 = 4131
- Polyurethane
- Nylon shell

**713SUCB****S-XL**

- EN 388 = 4131
- Polyurethane
- Nylon shell

**715SUGBC****XS-2XL**

- Made in China

**713SUGB****XS-2XL****HVY713SUTS****S-2XL**

- EN 388 = 4131
- Polyurethane
- Nylon shell
- Touchscreen fingertips

**713SUCG****XS-2XL**

- EN 388 = 4131
- Polyurethane
- Nylon shell

**713SUC****XS-XL**

- EN 388 = 4131
- Polyurethane
- Nylon shell

## FREQUENTLY ASKED QUESTIONS

### 1. What are the applications where polyurethane coated gloves can be used?

Detailed assembly, inspection, light fabrication and small parts handling. Safe for food contact but porous properties will allow bacteria to develop.

### 2. What are the benefits of a nylon shell glove?

Nylon gloves are preferred for many reasons. They provide excellent strength, flexibility, toughness, elasticity, abrasion resistance, washability, and ease of drying.



**701CRLB** M-2XL

- EN 388 = 3142
- Crinkle latex
- Polyester/cotton shell
- Zone Defense Glove



**700KSLC** S-2XL

- ANSI 3 cut level
- EN 388 = 2343
- Crinkle latex
- Kevlar® shell



**HVG700SLC** S-XL

- EN 388 = 2142
- Crinkle latex
- Polyester shell



**715TSSL** M-2XL

- EN 388 = 2221
- Sandy latex
- Thermal lining
- Nylon shell



**HVO700SLC** S-XL

- EN 388 = 2242
- Crinkle latex
- Polyester shell



**32L710** M-XL

- EN 388 = 3131
- Textured latex
- Heavyweight thermal shell
- Brushed acrylic loop-in terry knit shell



**700SLC** S-2XL

- EN 388 = 2242
- Crinkle latex
- Polyester shell



**715SLC** S-XL

- EN 388 = 3131
- Crinkle latex
- Nylon shell



**708SLC** L-XL

- Latex
- Cotton/polyester shell

**708SLCL** Ladies

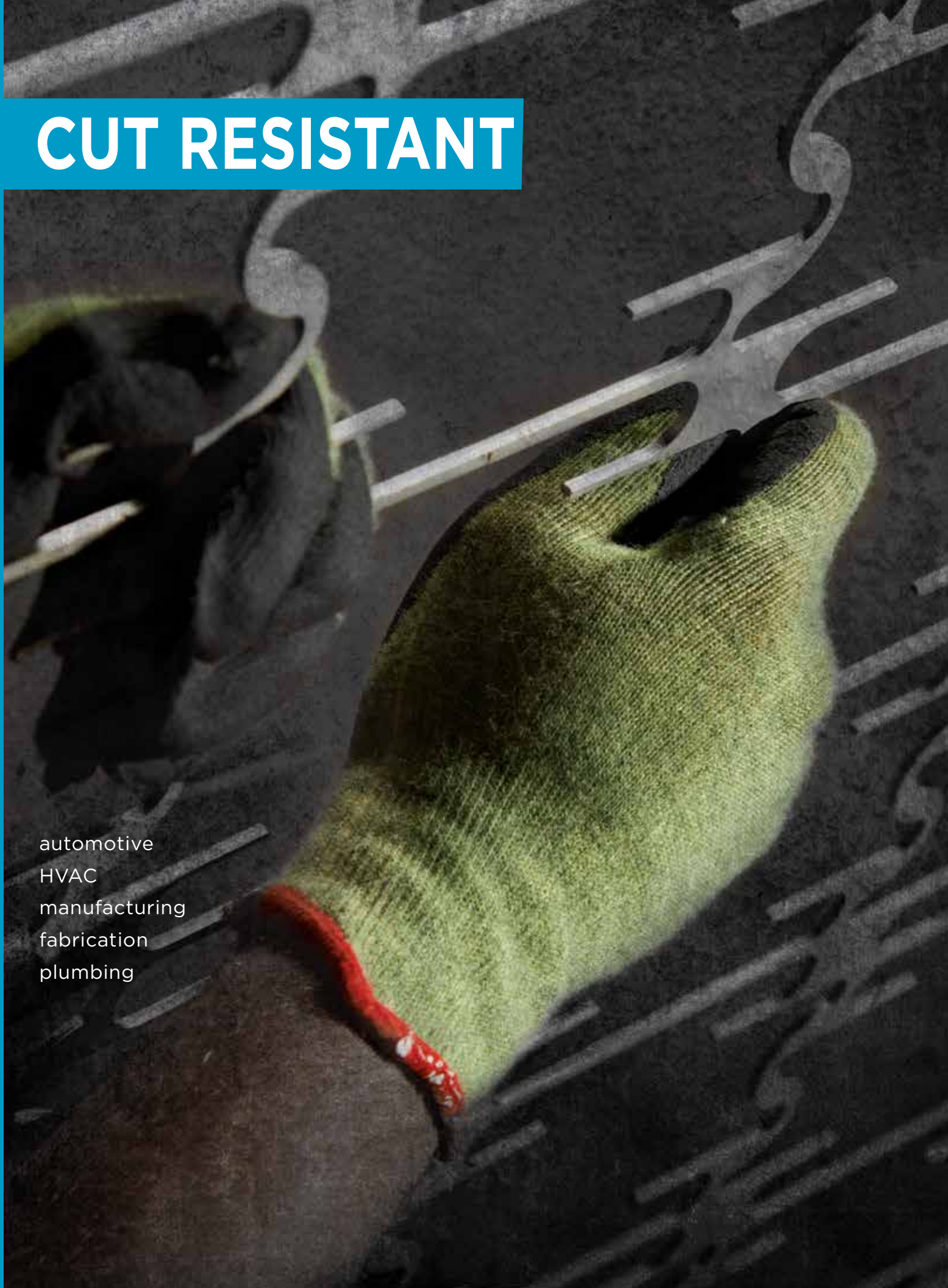
**708SLCE** L

- Economy
- Red



# CUT RESISTANT

automotive  
HVAC  
manufacturing  
fabrication  
plumbing



Cut resistant gloves and sleeves are designed to protect hands from direct contact with sharp objects such as glass and metal. The level of cut resistance provided is a combination of material composition and weight. Performance of a glove can also be affected by coatings applied to the surface which can also offer enhanced grip.

**Common cut resistant fibers include:**

**HPPE:** High performance polyethylene fibers offer maximum strength with minimum weight. HPPE is 10 times stronger than steel by weight as well as 40% stronger than aramid fibers offering a softer, cooler alternative.

**Aramid:** The most common brand name is Kevlar®. It is 5 times stronger than steel and provides great tensile strength. Due to its inherently flame resistant nature it will not melt and offers heat protection up to 320° F based on product design.

**Spectra:** A polyethylene fiber that is 10 times tougher than steel per unit weight offering high cut resistance even when wet. Its low lint and flexible nature make it ideal for use in food processing.

**Taeki5:** A blended yarn made of Taeki5®, fiberglass and synthetic fibers that delivers high cut resistance without sacrificing dexterity and tactile sensitivity.

**Blended Shells:** The introduction of steel and glass to HPPE and aramid help to significantly increase levels of cut protection while helping maintain comfort and fit.

**\*WARNING: Remember, no product is cut proof.**

There are two different standards to measure cut performance: the European Standard EN 388 and the ANSI/ISEA 105 standard for the U.S.

**EN 388**

EN 388 uses the coup test method based on a circular blade moving back and forth across the sample under a fixed load of 500 grams. In other words, it simulates the number of repetitive cuts needed to cut through the fabric using a constant load. The results are then compared to the cut results of a cotton canvas. For example, a cut level of 5 means that it is five times more cut resistant than the reference cotton.

Performance Level	Average Cut Index
0	< 1.2
1	1.2 - 2.4
2	2.5 - 4.9
3	5.0 - 9.9
4	10.0 - 19.9
5	> 20

**ANSI/ISEA 105**

ASTM F1790-97 and ASTM F1790-05 standard test methods for measuring cut resistance of materials used in protective clothing. These test measure the pressure (in grams) necessary to cut through a certain length of material while the material is held in a fixed position. The higher the value received, the better the cut performance.

It is important to know that cut levels and scores are not interchangeable. A glove with an EN cut level of 4 may not be as cut resistant as a glove with an ANSI cut level of 4. Even when comparing ANSI cut test scores, it is important to know which test method has been used.

The gloves featured in this catalog are cut resistant, not cut proof. There is no such thing as a cut proof glove. Use care when working with or around sharp objects.

Physical Properties	Weight in grams needed to cut through material
	1 inch (25 mm) of blade travel - ASTM F1790-97 0.8 inch (20 mm) of blade travel - ASTM F1790-05
0	< 200
1	200 - 499
2	500 - 999
3	1,000 - 1,499
4	1,500 - 3,499
5	< 3,500

**Level 1: RED ZONE**

*minimum cut protection*

Use for maintenance, box handling, transportation, light assembly, and light engineering. Do not use with sharp objects, knives, or saws.



**701CRNF**

**S-XL**

- ANSI 1 cut level
- EN 388 = 3132
- Foam nitrile
- Nylon shell



**701CRPB**

**S-2XL**

- ANSI 1 cut level
- EN 388 = 4131
- Polyurethane
- Nylon shell



**701CRLB**

**M-2XL**

- ANSI 1 cut level
- EN 388 = 3142
- Crinkle latex
- Polyester/cotton

**Level 2: ORANGE ZONE**

*medium cut protection*

Use for handling sharp objects, material handling, automotive, and construction.



**703CONF**

**S-2XL**

- ANSI 2 cut level
- EN 388 = 4343
- Foam nitrile
- HPPE shell



**703COPB**

**S-2XL**

- ANSI 2 cut level
- EN 388 = 4343
- Polyurethane
- HPPE shell

Use our Zone Defense® color-coded system of cut-resistant gloves to identify the right glove for the zone! Match the color-coding to the appropriate cut resistance level needed in each of your facility's work zones. Our Zone Defense® system offers shells and coatings to fit every need. Save money with just the right amount of protection.

**Level 3: GREEN ZONE**

*maximum cut protection*

Use for handling very sharp objects, glass handling and metal assembly.



**705CGNF**

**S-2XL**

- ANSI 3 cut level
- EN 388 = 4542
- Foam nitrile
- HPPE shell





**710KSS**

6-11

- ANSI 5 cut level
- Kevlar® and steel shell
- 21 CFR compliant for food contact



**710KSSN**

S-2XL

- ANSI 5 cut level
- EN 388 = 3542
- Foam nitrile
- Kevlar® and steel shell



**775SP**

XS-XL

- ANSI 5 cut level
- EN 388 = 4342
- Spectra/fiberglass/polyester shell
- 21 CFR compliant for food contact



**35KJYD**

L-XL

- ANSI 5 cut level
- Premium split leather palm
- Aramid shell



**HVY710HSNF**

S-2XL

- ANSI 4 cut level
- EN 388 = 4542
- Foam nitrile
- HPPE shell



**713KSSN**

XS-2XL

- ANSI 4 cut level
- EN 388 = 4542
- Foam nitrile
- Kevlar® and steel shell



**710SANF**

XS-XL

- ANSI 4 cut level
- EN 388 = 4533
- Foam nitrile
- Aramid/polyamide shell



**730TGLP**

M-XL

- ANSI 4 cut level
- EN 388 = 4543
- Select split leather palm
- Taeki 5® shell

Industries	ANSI Cut Level
Distribution	1
Construction	2
Manufacturing	3
HVAC	4
Automotive	5





**86715**

S-3XL

- ANSI 3 cut level
- EN 388: 4342
- Oil resistant synthetic leather palm with silicone grip
- TPR protection on the fingers, knuckle, and back of hand
- Kevlar® lined palm



**718HSPU**

S-2XL

- ANSI 3 cut level
- EN 388 = 3441
- Polyurethane
- 18 gauge HPPE shell
- Lightweight



**730TBN**

S-2XL

- ANSI 3 cut level
- EN 388 = 4542
- Flat nitrile
- Taeki 5® shell



**730TBNBDT**

S-2XL

- ANSI 3 cut level
- Nitrile dots
- Taeki 5® shell



**730TGU**

XS-2XL

- ANSI 3 cut level
- EN 388 = 4542
- Polyurethane
- Taeki 5® shell



**730T**

M-2XL

- ANSI 3 cut level
- Taeki 5® shell



**700KSLC**

S-2XL

- ANSI 3 cut level
- EN 388 = 2343
- Crinkle latex
- Kevlar® shell



**35KDBS**

XS, L-XL

- ANSI 3 cut level
- PVC dotted both sides
- Kevlar® shell

**35KDBSL**

Ladies

- PVC dotted palm only

**35KD**

L



**35K**

L-XL

- ANSI 3 cut level
- Kevlar® shell
- 7 gauge knit

**35KL**

Ladies



## RUGGED CUT PROTECTION THAT'S STRONGER THAN STEEL!

Our R2 FLX has a rugged HPPE fiber shell that is 10x stronger than steel. Ultimate cut protection. Ultimate comfort.

**713SNTPRG**

S-2XL



- ANSI 2 cut level
- HPPE shell
- Foam nitrile
- Impact protection



**713HUTS**

S-2XL

- ANSI 2 cut level
- EN 388 = 4342
- Polyurethane
- HPPE shell
- Touchscreen fingertips



**720DWU**

S-2XL

- ANSI 2 cut level
- EN 388 = 4342
- Polyurethane
- HPPE shell



**720DGU**

XXS-2XL

- ANSI 2 cut level
- EN 388 = 4342
- Polyurethane
- HPPE shell



**730TBU**

S-2XL

- ANSI 2 cut level
- EN 388 = 4542
- Polyurethane
- Taeki 5° shell



**713KSNF**

XS-2XL

- ANSI 2 cut level
- EN 388 = 4232
- Flat nitrile
- Kevlar® shell



**35KDEBS**

L

- ANSI 2 cut level
- PVC dotted both sides
- Kevlar®/cotton blend shell

**35KDEBSL**

Ladies



HEAT  
RESISTANT



CHEMICAL  
RESISTANT



CUT  
RESISTANT



IMPACT  
RESISTANT



FLAME  
RESISTANT



WATER  
RESISTANT



INSULATED



KEVLAR®

# ANSI 2



## DURABLE COWHIDE DRIVER WITH KEVLAR® CUT PROTECTION.

Love your traditional leather driver but need cut protection, too? This is the glove for you.

**KS990K**

S-2XL



- ANSI 2 cut level
- Kevlar® lining
- Keystone thumb
- Premium grain cowhide leather



**35KDF**

L



- ANSI 2 cut level
- PVC dotted both sides
- Kevlar® dotted fingerless glove



**34K**

L



- ANSI 2 cut level
- Kevlar® shell
- 13 gauge knit



**KS991K**

S-2XL



- ANSI 2 cut level
- Kevlar® lining
- Keystone thumb
- Premium grain goatskin leather

**35KDFL**

**Ladies**

### KNOW THE DIFFERENCE

	EN 388	ASTM F1970-97	ASTM F1970-05
<b>Machine Type</b>	Coup test tester	CPP tester Mounting tape	TDM/ CPP tester Copper wire
<b>What it Measures</b>	Measures number of times it takes to cut fabric vs. cotton canvas	Measures the amount of gram weight it takes to cut through fabrics	Measures the amount of weight it takes to cut through fabrics
<b>Reports Measurements In</b>	Levels and index	Levels and gram weight	Levels and gram weight
<b>Test Length</b>	Back and forth until cut through	25mm linear (@ inch)	20mm linear (@ ¾ inch)
<b>Weight Used</b>	500 grams constant	Increasing gram weight	Increasing gram weight
<b>Other Info</b>	Should not be used on high cut because blade dulls between tests	Higher ratings than 05	Lower ratings than 97
<b>Are Tests Comparable?</b>	No comparison to any other test	No comparison to any other method	Comparable to ISO13997

# LEATHER



construction  
electrical  
maintenance  
manufacturing  
material handling  
metal fabrication  
oil/gas  
welding

## CUTS OF LEATHER

### LEATHER TYPES

**Grain:** The smooth outside top layer of the hide.

**Split:** The rougher inside layer of the hide when top layer is removed.

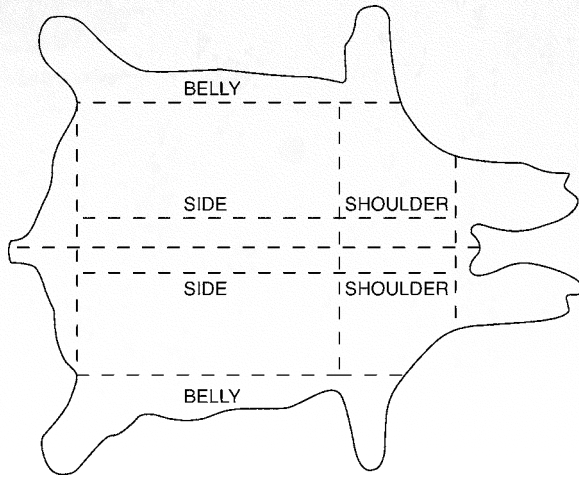
**Cowhide:** Most commonly used leather due to availability. The most heat resistant leather.

**Pigskin:** Greatest breathability due to its porous texture. Remains pliable after exposure to wet conditions.

**Goatskin:** One of the softest leathers due to its natural lanolin which provides waterproof and tactile sensitive properties.

**Deerskin:** The most luxurious leather available for comfort and sensitivity with longer wear.

**Elkskin:** Like deerskin, the soft texture provides superior comfort and stays flexible when exposed to heat.



### LEATHER CATEGORIES

**Premium:** The highest quality and most durable leather available provide the most uniform leather with few imperfections. Most commonly cut from the side area or rib section of the hide.

**Select:** Leather of consistent quality and thickness with slightly less durability than premium. Typically cut from the shoulder area of the hide where texture differences are more visible.

**Standard:** Provides the best value leather for the price with adequate quality and durability. Generally cut from the shoulder area or belly of the hide.

**Economy:** The least expensive option with inconsistencies in leather appearance and texture. Most commonly cut from the belly section of the hide.

## THE BENEFITS OF LEATHER



#### Cowhide

- Good durability
- Good insulation protection, especially against heat
- High puncture resistance



#### Pigskin

- Lightweight
- Highest breathability due to porous texture
- Low cost
- High abrasion resistance
- Tends to become softer and more flexible after use



#### Goatskin

- Natural lanolin creates soft feel
- High abrasion and puncture resistance
- High flexibility
- High durability



#### Deerskin

- Very soft and comfortable
- Highest insulation protection, especially against cold
- Highest durability and longest lasting
- Highest flexibility and dexterity

Leather Type	Puncture Resistance	Durability	Breathability	Leather Flexibility	Insulation	Moisture Resistance	Abrasion	Cost
Grain Pigskin	5	3	5	4	4	4	5	Low
Grain Cowhide	4	4	2	3	3	3	2	Average
Split Cowhide	4	4	2	2	2	3	2	Low
Grain Deerskin	2	5	2	4	4	5	4	High
Split Deerskin	2	2	4	5	5	3	3	Average
Grain Goatskin	4	4	2	4	4	1	3	Average
Grain Elkskin	2	4	2	4	3	4	4	High



Every day, welders face rough environments complete with heat, sparks, slag, and spall. Choosing the right glove is essential to not only minimizing safety risks but maximizing worker productivity and the quality of the weld.

When selecting hand protection, consider the application and environment and equip welders with gloves designed uniquely for the welding process used.

IRONCAT® welding gloves by West Chester Protective Gear are specifically designed for the unique heat shielding, dexterity and protection demands of Stick, MIG, and TIG welding processes.

### STICK

#### Maximum Heat Protection and Durability

Gloves for stick welding are designed with thicker materials to withstand higher heat. The longer length provides better forearm coverage, while welts protect finger seams against sparks and abrasion. Various materials (split cowhide, elk), linings (cotton, foam insulation) and thumb designs (wing, straight, reinforced strap) are available to suit worker preferences.

### MIG

#### Enhanced Dexterity and Comfort

MIG welding gloves allow for maximum dexterity with an unlined palm, while foam insulation on back of hand provides increased heat protection. Various lighter weight materials are available including cowhide for durability, goatskin for increased dexterity, deerskin for unparalleled comfort, and pigskin which stays pliable even with increased wear and exposure to moisture. Wing thumb designs for open-handed work are available, as are straight thumb designs for better grip. A reinforced thumb strap increases durability in high wear areas.

### TIG

#### Extreme Precision and Durability

Constructed of lighter weight materials, unlined TIG welding gloves allow for maximum dexterity. Goatskin is available for durability and comfort, while kidskin offers unmatched dexterity. For softer feel and comfort, deerskin gloves are available. Wing thumb designs for open-handed work are available, with a straight thumb design for optimal torch grip.



IRONCAT® is the result of countless hours of research and development with experienced welding protection manufacturers, and real world insight from one of the country's largest welding operations. With a very broad selection, customers can choose gloves with the dexterity, thumb style, comfort, and heat resistance at their desired price point.



## THE BEST FIT AND FEEL.

Protect your hands and arms with our 14" length, foam-lined glove. Great protection in high heat conditions.

**9060**

S-XL



- Premium Top grain elk
- Reinforced straight thumb
- Foam and cotton lining
- Kevlar® thread



S-XL

**9061**

- Premium Top grain elk
- Reinforced straight thumb
- Foam and cotton lining
- Kevlar® thread



L

**9031**

- Premium side split cowhide
- Double reinforced straight thumb
- Cotton lining
- Kevlar® thread



M-XL, LHO

**9051**

- Premium side split cowhide
- Double reinforced wing thumb
- Foam and cotton lining
- Kevlar® thread



L, LHO

**9050**

- Premium side split cowhide
- Reinforced wing thumb
- Foam and cotton lining
- Kevlar® thread



L

**9030**

- Premium side split cowhide
- Wing thumb
- Cotton lining
- Kevlar® thread



L, LHO

**2086GLF**

- Premium side split cowhide
- Reinforced straight thumb
- Cotton lining
- Kevlar® thread





9020

L, LHO

- Select shoulder split cowhide
- Reinforced straight thumb
- Cotton lining
- Kevlar® thread



9012L

Ladies

- Select shoulder split cowhide
- Wing thumb
- Foam and cotton lining
- Kevlar® thread



9040

L, LHO

- Select shoulder split cowhide
- Reinforced wing thumb
- Foam and cotton lining
- Kevlar® thread



9041

L, LHO

- Select shoulder split cowhide
- Reinforced wing thumb
- Foam and cotton lining
- Kevlar® thread



9401

L

- Select shoulder split cowhide
- Wing thumb
- Cotton lining
- Kevlar® thread



945

L, LHO

- Premium split cowhide
- Reinforced wing thumb
- Cotton lining
- Kevlar® thread



9400

L

- Premium side split cowhide
- Reinforced straight thumb
- Cotton lining
- Kevlar® thread



9011

L

- Select shoulder split cowhide
- Wing thumb
- Cotton lining



9010

L, LHO

- Select shoulder split cowhide
- Wing thumb
- Cotton lining





L

**940R**

- Standard split cowhide
- Wing thumb
- Cotton lining



L

**940**

- Premium split cowhide
- Wing thumb
- Cotton lining
- Kevlar® thread



L, LHO

**930K**

- Standard side split cowhide
- Wing thumb
- Cotton lining
- Kevlar® thread

**930**

L, LHO

- Polyester thread



## LESS BULK! BETTER DEXTERITY.



Our 9100 MIG welder glove with gauntlet cuff provides a high level of heat protection. Less bulk gets the job done.

**9100**

M-2XL



- Premium top grain cowhide and pigskin
- Wing thumb
- FR fleece lining
- Kevlar® thread



**6020**

M-L

- Premium top grain pigskin
- Reinforced straight thumb
- Foam lined back of hand
- Kevlar® thread
- 4" cuff



**6030**

M-L

- Premium top grain deerskin
- Reinforced straight thumb
- Foam lined back of hand
- Kevlar® thread
- 4" cuff



**6143**

M-XL

- Premium grain goatskin, split cowhide back, and cowhide
- Reinforced straight thumb
- Kevlar® thread
- Fleece lining



**6010**

S-XL

- Premium top grain cowhide
- Wing thumb
- Kevlar® thread
- 4" cuff



**6021**

S-XL

- Top grain pigskin
- Straight thumb
- Kevlar® thread
- 4" cuff



**6000**

S-XL

- Premium top grain cowhide
- Wing thumb
- Kevlar® thread
- 4" cuff





**SOFT FEELING.  
SNUG FIT.**

The soft, split deerskin leather of our 6130 TIG welding glove allows wire to freely pass over the glove while your hands and arms stay protected from burns.

**6130**

S-XL



- Premium deerskin split leather
- Straight thumb
- Kevlar® thread
- 4" Cuff



**6142**



- Premium grain goatskin
- Wing thumb
- Kevlar® thread
- 4" Cuff



**6141**



- Premium top grain kidskin
- Straight thumb
- Kevlar® thread
- 4" Cuff



**6140**



- Premium top grain kidskin
- Straight thumb
- Kevlar® thread
- 2" Cuff

**HIGH PERFORMANCE  
IRONCAT®**

High-dex handling gloves for ultimate protection for warehouse, maintenance and general purpose jobs.



**86550**



- Premium heavy duty grain goatskin
- Split leather reinforcements
- 4-Way stretch spandex back
- Hook and loop wrist strap



M-2XL

**86552**

- Fully Kevlar® lined
- ANSI 3 cut level



**86350**



- Premium heavy duty grain cowhide
- Split leather reinforcements
- 4-Way stretch spandex back
- Hook and loop wrist strap

## EXCEPTIONAL QUALITY. ATTRACTIVE STYLING.



Sewn with super strong heat-resistant DuPont Kevlar® thread for added wear. Gray tanned leather with a 9 oz. navy blue duck canvas elasticized back and hemmed, rubberized cuff. Wing thumb.

IC6

S-XL



- Premium side split leather
- Kevlar® thread
- Full leather back
- 2" rubberized safety cuff



S-XL

IC9

- Premium side split leather
- Kevlar® thread
- 4" rubberized gauntlet cuff



S-XL, 3XL

IC65

- Premium side split leather
- Kevlar® thread
- 3/4 Leather back
- 2" rubberized safety cuff



L-XL

IC8DP

- Premium side split leather
- Kevlar® thread
- Double palm
- 4" rubberized gauntlet cuff



S-XL

IC5DP

- Premium side split leather
- Kevlar® thread
- Double palm
- 2" rubberized safety cuff



S-XL

IC8

- Premium side split leather
- Kevlar® thread
- 4" rubberized gauntlet cuff



S-XL

IC5

- Premium side split leather
- Kevlar® thread
- 2" rubberized safety cuff



## QUALITY LEATHER FOR COMFORT AND RELIABLE PROTECTION.

- Weltd seams on middle fingers for added strength
- Color-coded cotton hem for size identification
- Shirred elastic wrist ensures a secure fit
- Straight or keystone thumb
- Some styles available with 3M™ Thinsulate®, Kevlar®, fleece or thermal lining



**984K**



**S-3XL**

- Premium grain leather
- Split leather palm patch
- Keystone thumb
- Gunn cut



**HV0990K**



**S-XL**

- Premium grain leather
- Hi-Viz orange back
- 3M™ Scotchlite™ fabric
- ANSI/ISEA 107-1999 Level 2



**990K-A**



**S-XL**

- Premium grain leather

**990K**

**S-5XL**

- Select grain leather

**990IK**

**S-5XL**

- Select grain leather
- Made in India

**995-K**

**S-2XL**

- Standard grain leather



**990**



**XS-2XL**

- Select grain leather

**990-I**

**S-2XL**

- Select grain leather
- Made in India

**995**

**S-2XL**

- Standard grain leather



**990KOT**



**XS-2XL**

- Select grain leather
- Keystone thumb
- Gunn cut
- Hi-Vis orange finger tips

**990KOTT**



**XS-2XL**

- 3M™ Thinsulate™

**995KOT**

**XS-2XL**

- Standard grain leather



**990T**

**S-XL**

- Select grain leather
- Straight thumb
- Gunn cut
- Adjustable ball and tape wrist



**990LS**

**S-XL**

- Select grain leather
- Straight thumb
- Gunn cut
- Adjustable leather strap



**980**

**S-XL**

- Standard split leather
- Straight thumb
- Gunn cut



**993K**

**S-2XL**

- Select grain leather palm
- Split leather back
- Keystone thumb
- Kevlar® thread



**999**

**S-XL**

- Select grain leather
- Straight thumb
- Gunn cut
- Thermal lining



**999KF**

**S-2XL**

- Premium grain leather
- Keystone thumb
- Gunn cut
- Red fleece lining

**983K**

**S-XL**

- Standard grain leather palm



**988KT**

**S-XL**

- Premium split leather
- Keystone thumb
- Gunn cut
- 100 gram 3M™ Thinsulate™ lining



**999KT**

**S-XL**

- Keystone thumb
- Gunn cut
- 100 gram 3M™ Thinsulate™ lining



**KS990K**

**S-2XL**

- Select grain leather
- Keystone thumb
- Kevlar® lining
- ANSI 2 Cut Level



# TOUGH PIGSKIN LEATHER PROVIDES DURABLE HAND PROTECTION FOR GENERAL WORK APPLICATIONS.

- Some styles available with 3M™ Thinsulate®, Kevlar®, fleece or thermal lining
- Color-coded hem
- Straight or keystone thumb
- Pigskin is moisture resistant but also has excellent breathability, keeping hands cool and dry



**9940K**

**S-XL**

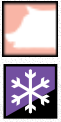
- Premium grain leather
- Keystone thumb
- Gunn cut



**9940KWT**

**S-XL**

- Select grain leather
- Keystone thumb
- Gunn cut
- Thermal lining



**994KP**

**S-2XL**

- Select grain leather
- Keystone thumb
- Gunn cut
- 120gm Positherm™ lining

**994K**

**S-3XL**

- Select grain leather

**994KF**

**S-2XL**

- Standard grain leather
- Red fleece lining



**994**

**S-3XL**

- Select grain leather
- Straight thumb
- Gunn cut



**9940KF**

**S-XL**

- Select grain leather
- Keystone thumb
- Gunn cut
- Red fleece lining

**9940KT**

**S-XL**

- Premium grain leather
- 100 gram 3M™ Thinsulate™ lining





**991K**

**S-2XL**

- Premium grain goatskin
- Keystone thumb
- Gunn cut



**KS991K**

**S-2XL**

- Premium grain goatskin
- Keystone thumb
- Kevlar® lining
- ANSI 2 Cut Level



**9920K**

**XXS-XL**

- Premium grain deerskin
- Keystone thumb
- Gunn cut



**9920KT**

**L-XL**

- 100g 3M™ Thinsulate™ lining

**9925K**

**XS-XL**

- Standard grain deerskin

**Linesman Gloves**

Leather protectors are made with durable top grain leathers. Leather protectors need to be worn over rubber insulating gloves to protect the rubber insulating gloves from cuts, abrasions, and punctures. These gloves are designed to current ASTM F696 standards. Used by power and communication professionals.



**LM991**

**9-12**

- Unlined premium goatskin glove protector
- Straight thumb
- Made to standard ASTM F696
- Leather linesman protector



**LM6000**

**9-12**

- Grain cowhide
- Straight thumb
- Wear over class 1 and 2 14" rubber insulating gloves
- Made to standard ASTM F696
- Leather linesman protector



# LEATHER PALM | SINGLE PALM

LEATHER

Full-featured gunn and clute pattern work gloves come with an absorbent cotton lining, which is fully sewn in on the thumb and little finger.

Features include a reinforced knuckle strap, welted seams on the middle fingers and a pull tab.



S-XL

## 800-AAA

- Premium heavy split cowhide
- Wing thumb
- Rubberized gauntlet cuff



L-XL

## 500-AA

- Premium heavy split cowhide
- Wing thumb
- Rubberized safety cuff

## 500-AAA

S-XL

- Rubberized safety cuff



S-XL

## 550-A

- Premium select cowhide
- Wing thumb
- Rubberized safety cuff



S-3XL

## 500Y

- Premium split cowhide
- Wing thumb
- Rubberized safety cuff



L

## 500-A

- Select heavy split cowhide
- Wing thumb
- Rubberized safety cuff

## 800-A

L

- Select split cowhide



L

## 558Y

- Select split cowhide
- Wing thumb
- Rubberized safety cuff



L

## 500LC-A

- Select split cowhide
- Wing thumb
- Split cowhide safety cuff



L

## 558OR

- Select split cowhide
- Wing thumb
- Rubberized safety cuff



**500DC**



L

- Select split cowhide
- Wing thumb
- Safety cuff
- Duck cuff



**KS900-EA**



S-2XL

- Standard split cowhide
- Wing thumb
- Rubberized gauntlet cuff
- Kevlar® lining
- ANSI 2 cut level



**900-AA**



M-XL

- Premium split cowhide
- Wing thumb
- Rubberized gauntlet cuff
- Kevlar® thread



**900-EA**



L

- Select split cowhide
- Wing thumb
- Rubberized gauntlet cuff

**950-EA**

L

- Select split cowhide



**5558P**



L-XL

- Select split cowhide
- Wing thumb
- Safety cuff
- Pile lining



**500-EAF**



L

- Select split cowhide
- Wing thumb
- Rubberized safety cuff
- Fleece lining



**828**



L

- Standard split cowhide
- Wing thumb
- Plasticized cuff



**500**



M-XL

- Standard split cowhide
- Wing thumb
- Rubberized safety cuff

**500L**

Ladies



**500-EA**



L

- Select split cowhide
- Wing thumb
- Rubberized safety cuff

**500LHO-EA**

LHO

**500RHO-EA**

RHO

**800-EA**

L

- Rubberized gauntlet cuff



HEAT RESISTANT



CHEMICAL RESISTANT



CUT RESISTANT



IMPACT RESISTANT



FLAME RESISTANT



WATER RESISTANT



INSULATED



KEVLAR®

# LEATHER PALM | SINGLE PALM



**528**

**L-XL**

- Standard split cowhide
- Wing thumb
- Plasticized safety cuff



**548**

**S-2XL**

- Economy split cowhide
- Wing thumb
- Rubberized safety cuff



**558**

**M-2XL**

- Standard split cowhide
- Wing thumb
- Rubberized safety cuff

**848**

**S-2XL**

- Rubberized gauntlet cuff

**558L**

**Ladies**

- Rubberized gauntlet cuff

**858**

**S-2XL**

- Rubberized gauntlet cuff



**500SC**

**L**

- Standard split cowhide
- Wing thumb
- Starched safety cuff

**500SCL**

**Ladies, Ladies S**

**800SC**

**L**

- Starched gauntlet cuff



**400-SC**

**L**

- Economy split cowhide
- Wing thumb
- Starched safety cuff

**400-SCL**

**Ladies**



**400-SCR**

**L**

- Economy split cowhide
- Patch palm
- Starched safety cuff
- Wing thumb



**500BD**

**L**

- Economy split cowhide
- Wing thumb
- Safety cuff



**500BD-R**

**L**

- Economy split cowhide
- Patch palm
- Wing thumb
- Safety cuff



**350-EA**

**L**

- Select split cowhide
- Wing thumb
- Knit wrist

**350L-EA**

**Ladies**

**350**

**L**



100

- Standard split cowhide
- Straight thumb
- Knit wrist



L



100P

- Standard split cowhide
- Straight thumb
- Knit wrist



L



100Y

- Select split cowhide
- Straight thumb
- Knit wrist



L

200

Ladies



501

- Grain goatskin
- Wing thumb
- Rubberized safety cuff



L



5000

- Premium grain cowhide
- Wing thumb
- Rubberized safety cuff



S-2XL



5150

- Grain cowhide
- Wing thumb
- Rubberized safety cuff



S-3XL

8000

S-2XL

- Rubberized gauntlet cuff



5050

- Standard grain cowhide
- Patch palm
- Wing thumb
- Rubberized safety cuff



L



500P

- Select brushed pigskin
- Wing thumb
- Rubberized safety cuff



L



5555

- Premium grain pigskin
- Wing thumb
- Safety cuff
- 100g 3M™ Thinsulate™ lining



S-XL



HEAT RESISTANT



CHEMICAL RESISTANT



CUT RESISTANT



IMPACT RESISTANT



FLAME RESISTANT



WATER RESISTANT



INSULATED



KEVLAR®



**1555**

**L**

- Premium grain pigskin
- Wing thumb
- Knit wrist
- 100g 3M™ Thinsulate™ lining



**HVO5000**

**S-2XL**

- Premium grain cowhide
- Wing thumb
- Rubberized safety cuff
- Hi-Viz knuckle strap
- 3M™ Scotchlite™ Fabric



**HVO500**

**S-XL**

- Premium split cowhide
- Wing thumb
- Hi-Viz safety orange back
- 3M™ Scotchlite™ fabric



**HVO5555**

**L-XL**

- Premium grain pigskin
- Wing thumb
- Rubberized safety cuff
- 100g 3M™ Thinsulate™ lining
- 3M™ Scotchlite™ fabric



**HVO1555**

**S-XL**

- Grain pigskin
- Wing thumb
- Knit wrist
- Hi-Viz knuckle strap
- 3M™ Scotchlite™ fabric
- 100g 3M™ Thinsulate™ lining



**HVO1555B**

**L, XL, 2XL**

- Grain pigskin
- Wing thumb
- Knit wrist
- Hi-Viz knuckle strap
- 3M™ Scotchlite™ fabric
- 100g 3M™ Thinsulate™ lining
- Waterproof lining

## FIND THE RIGHT GLOVE FOR THE RIGHT CONDITION

West Chester Protective Gear offers a wide variety of insulated gloves. From the light insulation of brushed knit to the heavy insulation of 150 gram Thinsulate®, there is a glove to fit your job application in most environments.

<b>Extreme Cold</b>	For extremely cold conditions, very light activity levels or specialized applications requiring additional warmth. <b>150g Thinsulate® Lining</b>
<b>Very Cold</b>	For very cold conditions or light activity levels where the wearer generates little body heat through activity. <b>100g Thinsulate® Lining   120g Positherm® Lining</b>
<b>Cold</b>	For cold conditions or for high activity levels where the wearer generates a lot of body heat through activity. <b>40g Thinsulate® Lining   Pile Lining   Thermal Lining   Brushed Terry</b>
<b>Cool</b>	For cool conditions when light warmth is needed. <b>Brushed Knit   Fleece Lining</b>



**500DP-AA**

S-XL

- Premium split cowhide
- Reinforced palm and index finger
- Rubberized safety cuff
- Kevlar® thread
- Wing thumb



**500DP-AAA**

S-XL

- Premium split cowhide
- Reinforced fingers and palm
- Rubberized safety cuff
- Kevlar® thread
- Wing thumb



**500DP-A**

L

- Select split cowhide
- Reinforced palm and index finger
- Rubberized safety cuff
- Wing thumb

**500LDP-A**

Ladies

**800DP-AAA**

L-XL

**800DP-A**

L

- Rubberized gauntlet cuff



**500DP**

M-XL

- Select split cowhide
- Reinforced palm and index finger
- Rubberized safety cuff
- Wing thumb

**500LDP**

Ladies

**800DP**

L

- Rubberized gauntlet cuff



**528DP**

L

- Select split cowhide
- Reinforced palm and index finger
- Plasticized safety cuff
- Wing thumb

**450DP**

L-2XL

- Standard split cowhide
- Reinforced palm and index finger
- Rubberized safety cuff
- Wing thumb

**750DP**

L

- Rubberized gauntlet cuff



HEAT RESISTANT



CHEMICAL RESISTANT



CUT RESISTANT



IMPACT RESISTANT



FLAME RESISTANT



WATER RESISTANT



INSULATED



KEVLAR®

# HIGH DEXTERITY

automotive  
oil/gas  
construction  
power tool







Gloves designed specifically for the Oil, Gas, and Mining industries' most demanding jobs. All R2 gloves are tested for impact resistance based on ASTM D2632. All R2 gloves exceed mining standards for impact.



All R2 gloves feature Kevlar® enhancements

HIGH DEXTERITY



**86712 R2 Safety**

S-3XL

- Oil resistant synthetic leather palm with silicone grip
- TPR protection on the fingers, knuckle, and back of hand
- Kevlar® reinforced thumb saddle and index finger
- Long neoprene safety cuff
- EN 388 = 4121



**86713 R2 Safety**

S-3XL

- Oil resistant synthetic leather palm with silicone grip
- TPR protection on the fingers, knuckle, and back of hand
- Kevlar® reinforced thumb saddle and index finger
- Hook and loop wrist
- EN 388 = 4121



**86711 R2 Safety**

M-2XL

- Oil resistant synthetic leather palm with silicone grip
- TPR protection on the fingers, knuckle, and back of hand
- Kevlar® reinforced thumb saddle and index finger
- 40g 3M™ Thinsulate™ lining with Enprotex® waterproof lining



**86712B R2 Safety**

S-3XL

- Blue back of hand



**86713B R2 Safety**

S-3XL

- Blue back of hand



**86718 R2 Safety**

M-2XL

- Oil resistant synthetic leather palm with silicone grip
- TPR protection on the fingers, knuckle, and back of hand
- Kevlar® reinforced thumb saddle and index finger
- 150g 3M™ Thinsulate™ lining with Enprotex® waterproof lining





## FIRE RESISTANT. MAXIMUM COMFORT.

This R2 glove features flame-retardant Kevlar®. Plus our TPR back-of-hand protection guards against bumps and pinches.

86716

S-3XL



- Digital printed goatskin
- TPR protection on the fingers, knuckle and back of hand
- Zero predicted burn injury tested in accordance with ASTM F1930
- Meets ASTM 6413 for flame resistance
- Knit wrist



713SNTPRG R2 FLX

S-2XL

- Foam nitrile
- TPR protection on the fingers, knuckle and back of hand
- Rugged HPPE shell
- ANSI 2 cut level
- EN 388 = 4344



86715 R2 Cut

S-3XL

- Oil resistant synthetic leather palm with silicone grip
- TPR protection on the fingers, knuckle and back of hand
- Enprotex® liner provides waterproof barrier
- Pique lining with Coolpass moisture wicking fabric
- Kevlar® lined palm
- ANSI 3 cut level
- EN 388 = 4342



86710 R2

S-3XL

- Oil resistant synthetic leather palm with silicone grip
- TPR protection on the fingers, knuckle and back of hand
- Kevlar® reinforced thumb saddle and index finger
- EN 388 = 4121



## A VALUABLE ADDITION TO THE R2 FAMILY.

The newest member of the R2 family contains all the protection and dexterity you expect from the R2 line at a comfortable price point.

86810 R2 LD

S-3XL



- Red PVC patch palm for added grip
- TPR protection on the fingers, knuckle and back of hand
- Kevlar® reinforced thumb saddle and index finger
- Long neoprene safety cuff
- EN 388 = 3111

## PROSERIES™ GLOVES FOR ULTIMATE PROTECTION AND PERFORMANCE.

Form fitting spandex back and pre-curve design enhances comfort and delivers unrestricted movement and dexterity.



**86150 The Job 1®** **S-2XL**

- Synthetic leather padded palm
- Reinforced fingertips
- 4-Way stretch spandex back
- Reinforced thumb saddle
- Hook and loop wrist strap



**86110 The Task®** **M-2XL**

- Synthetic leather palm
- Reinforced fingertips
- 4-Way stretch spandex back
- Reinforced thumb saddle
- Slip on style



**86300 The Super Tech®** **M-2XL**

- Synthetic leather palm and fingertips
- 4-Way stretch spandex back
- Hook and loop wrist strap



**86540 The Brute®** **S-2XL**

- Padded and reinforced PVC patched palm
- PVC reinforced thumb saddle
- Impact protection on the fingers, knuckle, and back of hand
- Hook and loop wrist strap



**86650 The Grip** **M-2XL**

- Synthetic leather palm and fingertips with silicone grip
- 4-Way stretch spandex back
- Reinforced thumb saddle
- Hook and loop wrist strap



**96650 The Yeti** **M-2XL**

- Waterproof and fleece lined
- PVC reinforced fingers
- Hook and loop wrist strap



**86500 The Tank®** **M-2XL**

- Synthetic leather palm with reinforced fingertips
- Neoprene padded knuckles
- Reinforced thumb saddle
- Hook and loop wrist strap





**NATURAL FIT.  
INCREASED PROTECTION.**

Split leather patch reinforcements on the palm and thumb saddle for increased protection. Heavy duty grain cowhide provides a natural fit.

**86350**

**S-2XL**

- Premium heavy duty grain cowhide
- Split leather reinforcements
- 4-Way stretch spandex back
- Hook and loop wrist strap



**86550**

**S-2XL**

- Premium heavy duty grain goatskin
- Split leather reinforcements in palm and thumb
- 4-Way stretch spandex back
- Hook and loop wrist strap



**86400**

**M-2XL**

- Heavy duty grain deerskin
- 4-Way stretch spandex back
- Hook and loop wrist strap



**86000**

**M-2XL**

- Heavy duty split cowhide
- Stretch spandex back
- Hook and loop wrist strap



**86525G Safety**

**M-2XL**

- Hi-Viz spandex back and reflective material
- Reinforced palm and fingertips
- Neoprene padded knuckles
- Hook and loop wrist strap



**86525 Safety**

**M-2XL**

- Hi-Viz spandex back and reflective material
- Reinforced palm and fingertips
- Neoprene padded knuckles
- Hook and loop wrist strap



**86700 The 3x2®**

**M-2XL**

- Synthetic leather palm with reinforced fingertips
- 4-Way stretch spandex back
- Hook and loop wrist strap
- Open thumb, index and middle finger

# COTTON/STRING



automotive  
cleaning  
janitorial  
material handling  
maintenance  
manufacturing



## DOUBLE-SIDED COVERAGE. INCREASED GRIPPING ABILITY.

PVC dots on both sides and a PVC stripe on the thumb for additional protection and enhanced gripping ability.

**712SKBSGT**

**S-XL**

- Heavyweight cotton/polyester knit
- PVC stripe reinforcement on thumb and index saddle



**708SKH**

**S-XL**

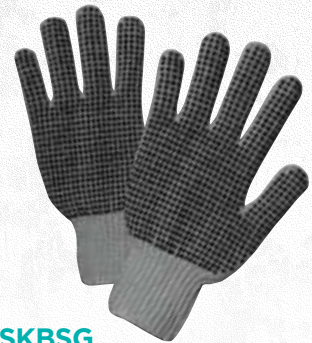
- Medium weight acrylic/polyester knit
- PVC crisscross grip pattern both sides
- Elastic wrist



**K708SKHW**

**S-XL**

- Medium weight cotton/polyester knit
- PVC honeycomb grip pattern both sides
- Elastic wrist



**708SKBSG**

**L**

- Standard weight cotton/polyester knit
- PVC dots both sides
- Elastic wrist

**708SKBSLG**

**Ladies**



**K708SKBSW**

**L**

- Medium weight bleach white knit
- PVC dots both sides
- Elastic wrist

**K708SKBSWL**

**Ladies**



**K708SKW**

**L**

- Medium weight bleach white knit
- PVC dots on one side
- Elastic wrist

**K708SKWL**

**Ladies**



**B710SBS**

**L**

- Medium weight cotton/polyester knit
- PVC blocks both sides
- Elastic wrist

**B710SBSL**

**Ladies**



**708SKBS** L

- Standard weight cotton/polyester knit
- PVC dots both sides
- Elastic wrist

**708SKBSL** Ladies

**708SKBSY** XS



**708SK** L

- Standard weight cotton/polyester knit
- PVC dots one side
- Elastic wrist

**708SKL** Ladies



**K710SBW** L

- Medium weight 7 gauge cotton/polyester
- Reversible
- Elastic wrist

**K710SBWL** Ladies



**K713S** L

- Premium 13 gauge cotton/polyester
- Reversible
- Elastic wrist

**K7100S** L

- Premium 10 gauge cotton/polyester
- Reversible
- Elastic wrist

**K7100SL** Ladies

**K7100SY** XS



**708SC** L

- Standard weight 7 gauge 100% cotton knit
- Overcast edging, color-coded hem
- Natural string knit
- Elastic wrist

**708SCL** Ladies



**713SN** L

- Light weight 13 gauge 100% nylon knit
- Reversible
- Elastic wrist

**713SNL** Ladies

**713SNL/S** S

**713SNL/XS** XS



**713STB** L

- 13 gauge Dupont Thermastat® yarn
- Wicking yarns
- Insulated liner
- Elastic wrist



**713STW** L

- 13 gauge Dupont Thermastat® yarn
- Wicking yarns
- Insulated liner
- Elastic wrist



# STRING KNIT



## **714S** **L**

- Extra heavyweight 7 gauge cotton/polyester knit
- Overcast edging, color-coded hem
- Natural string knit
- Elastic wrist

## **714SL** **Ladies**

## **712S** **L**

- Heavyweight 7 gauge cotton/polyester knit

## **712SL** **Ladies**

## **710S** **L**

- Medium weight 7 gauge cotton/polyester knit

## **710SL** **Ladies**

## **708S** **L**

- Standard weight 7 gauge cotton/polyester knit

## **708SL** **Ladies**

## **708SY** **XS**

## **706S** **L**

- Economy weight 7 gauge cotton/polyester knit

## **706SL** **Ladies**



## **714SG** **L**

- Extra heavyweight 7 gauge cotton/polyester knit
- Overcast edging, color-coded hem
- Gray string knit
- Elastic wrist

## **714SLG** **Ladies**

## **712SG** **L**

- Heavyweight 7 gauge cotton/polyester knit

## **712SLG** **Ladies**

## **710SG** **L**

- Medium weight 7 gauge cotton/polyester knit

## **710SLG** **Ladies**

## **708SG** **L**

- Lightweight 7 gauge cotton/polyester knit

## **708SLG** **Ladies**



## **KJ011** **L**

- Medium weight 100% cotton jersey
- Reversible
- Knit wrist

## **KJ81** **L**

- Standard weight 100% cotton

## **KJ8LI** **Ladies**

## **KJ55I** **L**

- Economy weight 100% cotton

## **KJ55LI** **Ladies**





**750** **L-XL**

- Standard weight cotton/polyester
- Clute cut
- Knit wrist

**750L** **Ladies**



**755C** **L**

- Standard weight 100% cotton
- Red fleece lining
- Slip on style



**750RKW** **L-XL**

- Standard weight cotton/polyester
- Fleece lining
- Clute cut
- Knit wrist



**750R** **L**

- Standard weight cotton/polyester
- Reversible
- Knit wrist



**KBJ9PDI** **L**

- Premium weight cotton/polyester
- Clute cut
- Dotted palm

**KBJ9PDLI** **Ladies**

**750PD** **L**

- Standard weight cotton/polyester

**750PDL** **Ladies**



**KBJ9I** **L**

- Premium weight 100% cotton
- Clute cut
- Knit wrist

**KBJ9LI** **Ladies**

**750C** **L**

- Standard weight 100% cotton
- Clute cut
- Knit wrist

**750LC** **Ladies**





**705** **L-XL**

- Economy weight 100% cotton
- Reversible
- Cotton Lisle Inspector glove



**805** **L-XL**

- Heavyweight 100% cotton
- Reversible
- Extended 10" length
- Cotton Lisle Inspector glove



**905** **M-XL**

- Medium weight 100% nylon
- Reversible
- Nylon Lisle Inspector glove

**705L** **Ladies**

**805L** **Ladies**

**705-14** **L**

- Extended 14" length



**710KGRPD** **L**

- Green standard weight polyester/cotton canvas
- Clute cut
- PVC dotted palm, thumb and index



**710KORPD** **L**

- Orange standard weight polyester/cotton canvas
- Clute cut
- PVC dotted palm, thumb and index



**SOK01PDI** **L**

- Standard weight cotton canvas
- Clute cut
- PVC dotted palm, thumb and index

**SOK01PDLI** **Ladies**



**780K** L

- Standard weight cotton/polyester canvas
- Clute cut
- PVC dotted palm, thumb and index
- Knit wrist

**780LK** Ladies



**708C** L

- Standard weight 100% cotton canvas
- Clute cut
- Knit wrist

**708LC** Ladies



**710BKWK** L

- Medium weight cotton/polyester canvas
- Clute cut
- Brushed interior
- Blue knit wrist

**KO1PDI** L

- Medium weight 100% cotton canvas



**712K** L

- Heavyweight cotton/polyester canvas
- Clute cut
- Knit wrist



**K21I** L

- Heavyweight cotton/polyester canvas
- Clute cut
- Knit wrist



**GS21I** L

- Heavyweight 100% cotton canvas
- Starched gauntlet cuff
- Clute cut

**710K** L

- Medium weight cotton/polyester canvas

**KO1I** L-XL

- Medium weight cotton/polyester canvas

**708K** L

- Standard weight cotton/polyester canvas

**K8I** L

- Standard weight cotton/polyester canvas

**708KL** Ladies

**708** L

- Economy weight cotton/polyester canvas

**708L** Ladies



# CORDED PALM



**K81CNCGR1** **XL**

- Medium weight 100% cotton
- Fully corded
- Knit wrist



**K81CNCORI** **XL**

- Medium weight 100% cotton
- Fully corded
- Knit wrist



**K81SCNCRIPD** **XL**

- Medium weight polyester/cotton
- Dotted palm
- Fully corded
- Knit wrist

**K81SCNCR1** **XL**

- Medium weight polyester/cotton

**K81SCNCORI** **XL**

- Medium weight polyester/cotton

**K80SCNCR1** **L**

- Medium weight polyester/cotton

**K80SCNCORI** **L**

- Medium weight polyester/cotton

**K83SCNCR1** **L**

- Economy weight polyester/cotton

**K83SCNCORI** **L**

- Economy weight polyester/cotton



**K81SCNCR1** **L**

- Medium weight polyester/cotton
- Fully corded
- Double palm
- Red knit wrist



**K81SPNJRI** **XL**

- Medium weight polyester/cotton
- Nap in
- Double palm
- Red knit wrist



**K81SCNCRIPD** **XL**

- Medium weight, polyester/cotton
- Dotted palm
- Fully corded
- Knit wrist



**K81SCNCI**

L

- Medium weight polyester/cotton
- Fully corded
- Double palm
- Knit wrist



**K81SNI**

L-XL

- Medium weight polyester/cotton
- Corded palm with canvas back
- Double palm
- Knit wrist



**790NIBT**

L

- Medium weight 100% cotton palm
- Polyester/cotton back of hand
- Band top cuff
- Double palm
- Nap in



**718BT**

L

- Medium weight 100% cotton
- Nap out
- Band top
- Double palm



**790NI**

L

- Medium weight 100% cotton palm
- Polyester/cotton back of hand
- Band top cuff
- Knit wrist
- Double palm
- Nap in

**Cotton or cotton blend gloves are traditional work gloves used in many industries due to their superior comfort and protection against dirt and grime.**

**Categories of gloves include:**

**Strings:** General purpose gloves that provide moderate protection from both heat and cold. Gauge references the number of rows of stitches per inch. A higher gauge means less bulk and greater dexterity.

**Dotted/Coated:** Ideal for material handlers due to the enhanced grip, added protection and extended wear provided by the dots or palm coating.

**Terry:** Provides moderate thermal protection and cut resistance.

**Jersey:** A comfortable alternative that comes in a variety of weights for general duty and light abrasion application.

**Chore:** The cotton shell provides the protection needed for general purpose or light duty jobs. Lining offers comfort and heat dispersion.

**Hotmill:** These multi-layered gloves offer greater protection for extended exposure to moderate heat.



# DOUBLE PALM



## GWB51S1

L

- Premium grade
- Gauntlet cuff
- Double palm chore
- 100% cotton shell



## M18BT

L

- Medium weight 100% cotton
- Nap out
- Band top chore



## M18G

L

- Medium weight 100% cotton
- Gauntlet cuff
- Double palm



## M18KW

L

- Medium weight 100% cotton
- Nap out palm
- Canvas back
- Knit wrist chore



## FM18KWK

L

- Medium weight 100% cotton
- Nap out
- Knit wrist full chore



**Nap In**



**Nap Out**

## Nap In and Nap Out

Napping is the pulling up of fibers from the base weave which results in a raised, fuzzy surface. This surface faces inward in nap in gloves and outward on nap out gloves. Nap in fabric provides greater abrasion resistance and outwears nap out fabric. Nap out fabric provides greater heat protection.



**T25NW**



S, L

- 100% cotton
- Loop-in double layer terry
- Nitrile W pattern both sides
- Nitrile swipe on fingertips, index and thumb saddle
- EN 407-2004 contact heat rating 2; EN 388 123 2
- Elastic wrist



**T24KW**



L

- 100% cotton
- Loop out terry
- Reversible
- Knit wrist

**T24KWL**

Ladies



**BG42SWSJI**



L

- Standard weight 100% cotton
- Nap out
- Band top, Hotmill



**GG42SI**



L

- Standard weight 100% cotton
- Nap out
- Gauntlet cuff, Hotmill



**7924GR**



L

- Standard weight 100% cotton shell
- Nap out
- Burlap lined
- Band top, Hotmill



**B02SNI**



L

- Standard weight 100% cotton shell
- Nap in
- Band top, Hotmill



**G03SI**



L

- Extra heavyweight 100% cotton shell
- Nap out
- Gauntlet, Hotmill



**7900BLG**



L

- Heavyweight 100% cotton shell
- Burlap lined
- Nap out
- Gauntlet, Hotmill

**7900G**

L

- Standard weight 100% cotton shell
- Cotton/polyester lining
- Gauntlet, Hotmill



**7930**



L

- Extra heavyweight 100% cotton palm
- Nap out
- Band top, Hotmill

**7900BL**

L

- Heavyweight 100% cotton shell
- Burlap lined

**7900K**

L

- Standard weight 100% cotton shell

**790K**

L

- Medium weight 100% cotton palm



HEAT RESISTANT



CHEMICAL RESISTANT



CUT RESISTANT



IMPACT RESISTANT



FLAME RESISTANT



WATER RESISTANT



INSULATED



KEVLAR®

# CHEMICAL RESISTANT



manufacturing  
chemical handling  
oil/gas  
cleaning  
janitorial  
hazmat  
abatement



Different glove materials resist different chemicals at varied exposure levels. Therefore, care must be taken in choosing the right glove for the given application. Thickness and length also play a role in determining the appropriate glove. Thicker gauge gloves are heavier and provide increased chemical resistance than thinner gloves. The length of glove needed can be determined by assessing the splash and immersion protection needed.

### The most common materials include:

**PVC:** Chemically resistant to oil, grease, acids and solvents while providing good abrasion resistance. A jersey or interlock lining enhances comfort.

**Nitrile:** Provides excellent abrasion, cut and snag resistance when encountering oils, greases and petroleum products. Choose smooth finish for dry grip or rough finish for wet and oily conditions.

**Neoprene:** Protection from chemicals, oils, acids, solvents and caustics.

**Latex:** Good sensitivity and dexterity making it ideal for food processing, electronics assembly and similar applications.

**Vinyl:** Provides moderate abrasion resistance and can have a textured finish that enhances grip. Choose a soft jersey lining for cushioning.

**Disposable gloves provide barrier protection for a variety of applications. Different materials are available to choose the appropriate protection for the environment.**

**Latex:** Resists bases, acids, alcohols and diluted solutions of many chemicals. Due to the natural proteins found in rubber, some individuals experience latex sensitivity. In these cases, nitrile or vinyl may be a good alternative.

**Nitrile:** A synthetic rubber compound, nitrile also protects against bases, oils, and many solvents as well as fats and greases. Nitrile can also provide excellent resistance to mild snags, punctures and cuts.

**Vinyl:** Provides protection against many acids, bases, and alcohols. It is not recommended for many types of solvents.

**Polyethylene:** Offers barrier against oils and fats and is most commonly used as an economical level of protection in the food industry.



**1017RF** 10"

- Rough grip
- PVC coating
- Interlock lining



**1017** 10"

- Smooth grip
- PVC coating
- Interlock lining



**J1027** 12"

- Smooth grip
- PVC coating
- Jersey lining

**1027RF** 12"

**1027** 12"

**1047RF** 14"

**1027L** Ladies

**1087RF** 18"

**1047** 14"

**1087** 18"

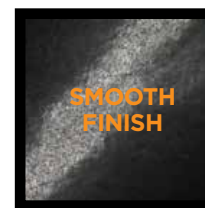
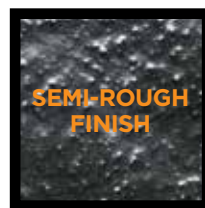
**1007** 18"

- Knit wrist

CHEMICAL RESISTANT

Typical glove lengths and areas of protection.

Glove Length	Area of Protection
12"	Hand and wrist
14"	Up to mid forearm
18"	Up to elbow





**J1017RF** 10"

- Rough grip
- PVC coating
- Jersey lining

**J1027RF** 12"

**J1047RF** 14"

**J1087RF** 18"

**J1007RF**

- Knit wrist



**J1217RF** 10"

- Rough grip
- PVC coating
- Jersey lining

**J1227RF** 12"

**J1247RF** 14"

**J1207RF**

- Knit wrist



**1017R** 10"

- Semi-rough grip
- PVC coating
- Interlock lining

**1027R** 12"

**1047R** 14"

**1007R**

- Knit wrist



**J210** 10"

- Acid grip
- PVC coating
- Jersey lining

**J212** 12"

**J214** 14"



**J1327** L-XL

- Rough grip
- Triple dipped
- Interlock lining



**1007ORV** S-XL

- Rough grip
- PVC coating
- Jersey lining
- Padded liner



CHEMICAL RESISTANT



**1007OR**

- Smooth grip
- PVC coating
- Foam over jersey lining
- Knit wrist



**1007ORF**

- Rough grip
- PVC coating
- Foam over jersey lining
- Knit wrist



**1047Y**

**14"**

- Smooth grip
- PVC coating
- Interlock lining



**1017OR**

- Smooth grip
- PVC coating
- Jersey lining
- White rubberized safety cuff



**1017ORF**

- Rough grip
- PVC coating
- Jersey lining
- White rubberized safety cuff



**J1017YBT**

- Smooth grip
- PVC coating
- Jersey lining
- Band top cuff



**1027OR**

**12"**

- Smooth grip
- PVC coating
- Foam over jersey lining



**1027ORF**

**12"**

- Rough grip
- PVC coating
- Foam over jersey lining



**J1027RY**

**12"**

- Semi-rough grip
- PVC coating
- Jersey lining



**33413**

**M-3XL**

- 13" length, unlined
- Unsupported nitrile, 12 mil
- Bulk packed



**33418**

**M-3XL**

- 13" length, flock lined
- Unsupported nitrile, 15 mil
- Bulk packed



**32212**

**M-3XL**

- Flock lined, 13" length
- Unsupported neoprene, 28 mil
- Bulk packed



**52N103**

**6-11**

- 13" length, flock lined
- Unsupported nitrile, 15 mil
- Pair packed



**52N100**

**7-11**

- 13" length, unlined
- Unsupported nitrile, 11 mil
- Pair packed



**2224**

**7-11**

- Flock lined, 13" length
- Neoprene over latex, 28 mil
- Pair packed

**52N104**

**8-11**

- 13" length, flock lined
- Unsupported nitrile, 18 mil
- Pair packed

**52N101**

**8-11**

- 13" length, unlined
- Unsupported nitrile, 15 mil
- Pair packed

**52N102**

**8-11**

- 18" length, unlined
- Unsupported nitrile, 22 mil
- Pair packed

**23224**

**M-3XL**

- Flock lined, 13" length
- Neoprene over latex, 22 mil
- Bulk packed

CHEMICAL RESISTANT



# NITRILE



**4550RFFC**

**L**

- Rough finish
- Heavyweight nitrile fully coated
- Jersey lining



**4550FC**

**L**

- Smooth finish
- Heavyweight nitrile fully coated
- Jersey lining



**4000**

**S-XL**

- Smooth finish
- Heavyweight fully nitrile coated
- Jersey lining



**4050**

**S-XL**

- Smooth finish
- Heavyweight nitrile 3/4 coated
- Jersey lining



**4550**

**S-XL**

- Smooth finish
- Heavyweight nitrile 3/4 coated
- Jersey lining



**2000**

**S-XL**

- Smooth grip
- Nitrile coating
- Foam over jersey lining

**4060**

**S-XL**

- Smooth finish
- Lightweight nitrile 3/4 coated
- Interlock lining



**105**

**M-XL**

- Smooth finish
- Nitrile coating
- Interlock lining



**2312**

- 12" length, flock lined
- Unsupported latex, 18 mil
- Bulk packed



**52L102**

- 12" length, flock lined, pinked cuff
- Unsupported latex, 21 mil
- Pair packed



**33313**

- 12" length
- Unsupported latex, 18 mil
- Bulk packed



**3312**

- 12" length, flock lined
- Unsupported latex, 16 mil
- Pair packed



**52L100**

- 13" length, unlined
- Unsupported latex, 18 mil
- Pair packed



**2343**

- 13" length
- Unsupported latex, 18 mil
- Pair packed

**52L101**

- 12" length
- Unsupported latex, 18 mil
- Bulk packed

**7-10**

**4344**

- 12" length, unlined
- Unsupported latex, 16 mil
- Bulk packed

**7-10**

**3343**

- 13" length
- Unsupported latex, 16 mil
- Bulk packed

**6-10**

**4343**

- 12" length
- Unsupported latex, 16 mil
- Bulk packed

**7-10**



**2208**

- 13" length, flock lined
- Unsupported latex, 28 mil
- Pair packed

**S-XL**



**3003**

- Coated palm and fingers
- Crinkle finish
- Safety cuff

**L**



**3001**

- Coated palm and fingers
- Crinkle finish
- Knit wrist

**L**



CHEMICAL RESISTANT



**3962**

**S-XL**

- Rough finish
- Vinyl coating
- Jersey lining



**3962I**

**S-XL**

- Rough finish
- Vinyl coating
- Interlock lining



**3115**

**S-XL, L-RHO**

- Vinyl coating
- Reinforced thumb
- Seams out
- Jersey lining



**201**

**M-XL**

- Stretch vinyl impregnated with PVC
- Interlock lining



**203**

**M-L**

- Non-stretch vinyl impregnated with PVC
- Interlock lining



**205**

**L**

- Vinyl palm with canvas back
- Knit wrist

**202**

**Ladies, S-L**





**2850** S-XL

- 7 mil
- 100 per box, white
- Powder free
- Industrial grade
- 21 CFR compliant for food contact



**2800** S-XL

- 4 mil
- 100 per box, white
- Powder free
- Examination grade
- 21 CFR compliant for food contact



**2550** S-2XL

- 14 mil
- 50 per box, dark blue
- Powder free
- Examination grade



**2500** XS-XL

- 4 mil
- 100 per box, white
- Powdered
- Examination grade
- 21 CFR compliant for food contact



**2800I** S-XL

- 4 mil
- 100 per box, white
- Powder free
- Industrial grade
- 21 CFR compliant for food contact



**2500I** S-XL

- 4 mil
- 100 per box, white
- Powdered
- Industrial grade
- 21 CFR compliant for food contact

CHEMICAL RESISTANT

### Latex

Latex, also known as rubber or natural rubber, is derived from the milky sap of the rubber tree, also known as the *Hevea Brasiliensis* tree found in southeast Asia and other parts of the world. It takes five years for a tree to reach maturity and to produce latex. The latex is “tapped” from trees and collected in buckets through cuts made in the bark of the tree.

Please note: natural rubber causes an allergic reaction in some individuals. Latex gloves are used in the healthcare, maintenance, janitorial, food processing, food services, and assembly industries.





S-2XL

**2950**

- 8 mil
- 50 per box, light blue
- Powder free
- Industrial grade
- 21 CFR compliant for food contact



S-2XL

**2920**

- 5 mil
- 100 per box, black
- Powder free
- Industrial grade
- 21 CFR compliant for food contact



XS-2XL

**2910**

- 4 mil
- 100 per box, light blue
- Powder free
- Industrial grade
- 21 CFR compliant for food contact



S-2XL

**2900**

- 4 mil
- 100 per box, light blue
- Powdered
- Industrial grade
- 21 CFR compliant for food contact



S-2XL

**2905**

- 3 mil
- 100 per box, light blue
- Powder free
- Industrial grade
- 21 CFR compliant for food contact

CHEMICAL RESISTANT

**Nitrile**

Nitrile rubber is a synthetic rubber also known as NBR (Nitrile Butadiene Rubber). Nitrile gloves are known for their strength, durability and elasticity. This form of synthetic rubber is resistant to oil, fuel and some chemicals. Nitrile gloves can be used as an alternative for people who have latex allergies. Nitrile gloves are used in the healthcare, automotive, food processing, food services and assembly industries.



**S-XL**

**2765**

- 5.5 mil
- 100 per box, green
- Powdered
- Industrial grade
- 21 CFR compliant for food contact



**S-2XL**

**2710**

- 4 mil
- 100 per box, dark blue
- Powdered
- Industrial grade
- 21 CFR compliant for food contact



**S-2XL**

**2700**

- 4 mil
- 100 per box, clear
- Powdered
- Industrial grade
- 21 CFR compliant for food contact



**S-XL**

**2750**

- 4 mil
- 100 per box, clear
- Powder free
- Industrial grade
- 21 CFR compliant for food contact



**S-2XL**

**2745**

- 3 mil
- 100 per box, clear
- Powder free
- Industrial grade
- 21 CFR compliant for food contact



**2400R**

**S-L**

- 1 mil
- Sold by case, 100 per box, 10 boxes per case, clear
- Powder free

CHEMICAL RESISTANT

## Vinyl

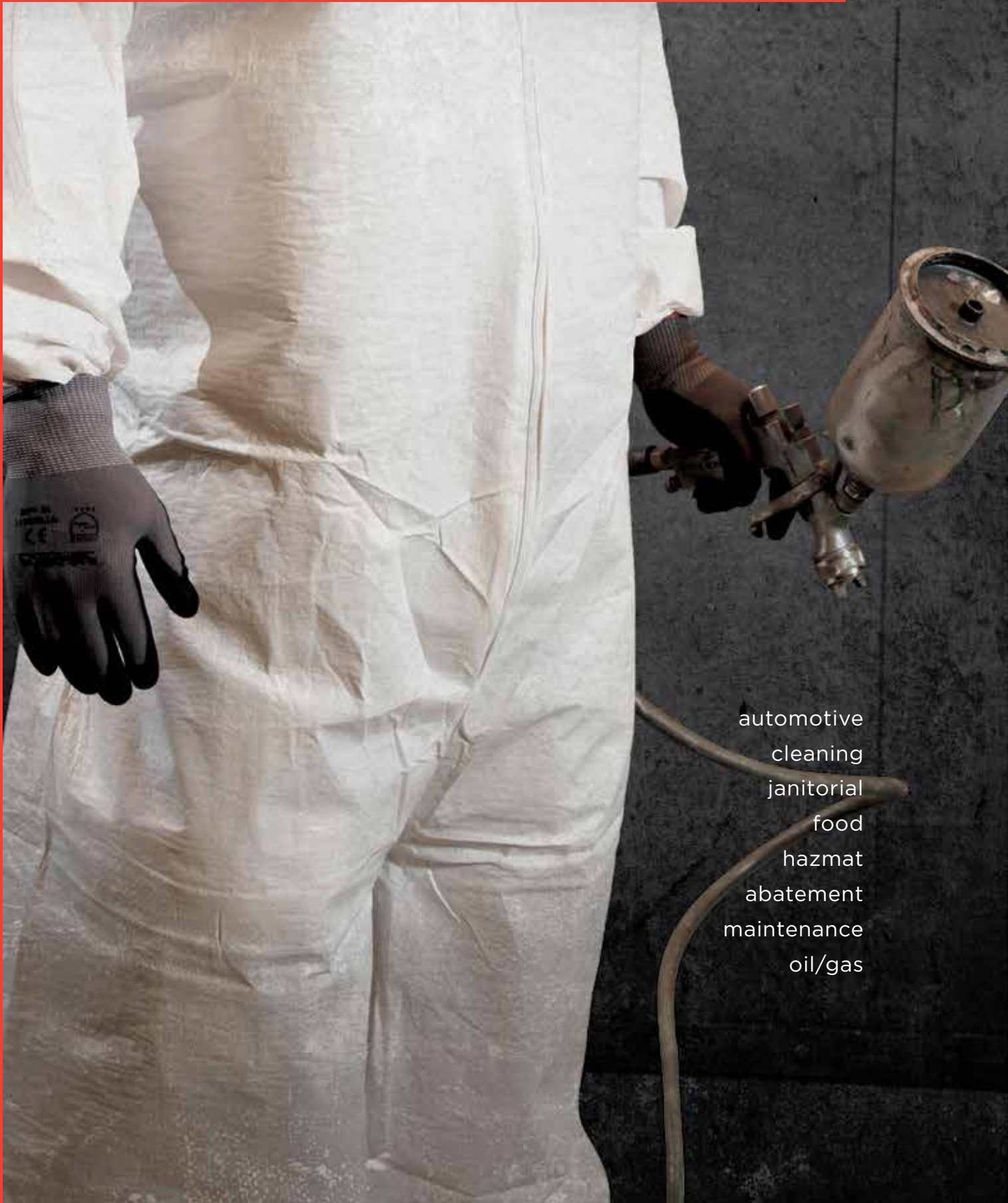
Vinyl is a synthetic, man-made material made from PVC (Polyvinyl Chloride). It is resistant to moisture and humidity but is not as form-fitting as latex or nitrile. Vinyl is known for its strength, durability and inexpensive cost. Vinyl gloves can be used as an alternative for people who have latex allergies.

## Polyethylene

This is a lightweight and flexible synthetic resin glove that is extremely affordable. It is a one-time use glove traditionally used in food service.



# DISPOSABLE CLOTHING



automotive  
cleaning  
janitorial  
food  
hazmat  
abatement  
maintenance  
oil/gas

Disposable clothing options are available for a variety of applications. When choosing the appropriate level of protection needed, it is helpful to ask the following questions:

**What are you trying to keep off?**

Dry particulates, light spray, liquid splash, or chemicals.

**What is the size of the particulate/liquid?**

Bigger or smaller than a grain of sand.

**If it is chemical, what is the chemical?**

Diluted solution or hazardous chemical.

**What are the work conditions and exposure time?**

Consider temperature and length of exposure to work hazards when selecting a suit.

**What size do you need?**

Select one size larger than actual size.

**Based on these answers, a variety of options exist, including:**

**PosiWear® UB:** Ultimate Barrier offers the highest level of barrier protection in the PosiWear® family against light sprays, liquid splash, and limited chemicals. Passes US and European standards for liquid barrier, blood, and viral penetration.

**PosiWear® BA:** Breathable Advantage provides ideal balance between protection and comfort with a microporous material that resists small dry particulates, light spray, and liquid splash while enhancing breathability. Passes US and European standards for liquid barrier and bloodborne pathogens.

**PosiWear® M3:** Five layers of spunbond and meltblown polypropylene filters particulates preventing them from reaching wearer but allowing for a high level of breathable comfort.

**PosiWear® FR:** Flame Resistant material designed to self-extinguish when sparks are present protecting the worker's underlying suit. Features highest oil repellency in the market making it ideal for use in refineries.

**PE Laminate/Coated:** A low-cost alternative providing lightweight protection against non-hazardous light spray and splash.

**Microporous:** An economical, breathable material designed for use in applications with dry particulates and liquid spray.

**Polypropylene:** Available in heavy or standard weight providing barrier protection against non-hazardous dry particulates.

POSIWEAR UB TYPICAL PROPERTIES			
Technical Properties	Method	Unit	White
<b>Strength</b>			
Basis Weight	ASTM D3376	GSM	57.65/1.7oz/yd <sup>2</sup>
Grab Tensile Strength	ASTM D5034	Lb/in-MD Lb/in-CD	29.2 24.6
Elongation	ASTM D5034	% MD % CD	54.6 70.1
Trap Tear	ASTM D5733	Lb/in-MD Lb/in-CD	12.4 10.8
Mullen Burst	ASTM D3786-87	psi	34.8
<b>Barrier</b>			
Hydrostatic Head	AATCC 127	cm	>>100
Static Decay	NFPA 99	< 0.5 sec	PASS
Resistance to Blood Penetration	ASTM F1670	Procedure B	PASS
Resistance to Viral Penetration	ASTM F1671	Procedure B	PASS
<b>Comfort</b>			
MVTR (50%RH@90°F)	ASTM E96	Grams/24/m <sup>2</sup>	65
Linting	Helmeke Drum IES-RP-CC-003.2	Particles/min (> 0.5um)	585

**\*These physical properties represent typical values of the nonwoven fabric. These values should not be considered as a specification or certificate of material and or specification value.**

CHEMICAL PENETRATION DATA SUMMARY FOR POSIWEAR® ASTM F903, PROCEDURE C			
Chemical	Chemical Family	Physical Phase	Pass/Fail
Acetone	Ketone	Liquid	Pass
Acetonitrile	Nitrile	Liquid	Pass
Carbon Disulfide	Sulfur Compound	Liquid	Pass
Dichloromethane	Halogen Compound	Liquid	Pass
Diethylamine	Amine	Liquid	Pass
N, N Dimethylformamide	Amide	Liquid	Pass
Ethyl Acetate	Ester, Carboxylic	Liquid	Pass
n-Hexane	Hydrocarbon	Liquid	Pass
Methanol	Hydroxylic Compound	Liquid	Pass
Nitrobenzene	Nitro Compound	Liquid	Pass
Sodium Hydroxide	Inorganic Base	Liquid	Pass
Sulfuric Acid	Inorganic Acid	Liquid	Pass
Tetrachloroethylene	Halogen Compound	Liquid	Pass
Tetrahydrofuran	Ether	Liquid	Pass
Toluene	Hydrocarbon	Liquid	Pass

**Chemical Penetration test performed by a third party laboratory. All chemicals used > 95% concentration except for Sodium Hydroxide (50% in water).**

Chemical	Chemical Family	Physical Phase	Average Normalized Breakthrough Time (minutes)	Average Permeation Rate (ug/cm <sup>2</sup> /mintue) Average Permeation Rate (ug/cm <sup>2</sup> /mintue)
Acetone	Ketone	Liquid	8	0.62
Acetonitrile	Nitrile	Liquid	<4	8.7
Ammonia	Inorganic Gas	Gas	4	4.5
1.3 Butadiene	Hydrocarbon	Gas	8	11.9
Carbon Disulfide	Sulfur Compound	Liquid	<4	<50
Chlorine Gas	Element	Gas	6	23
Dichloromethane	Halogen Gas	Liquid	4	0.059
Diethylamine	Amine	Liquid	4	9.5
N,N-Dimethyl formamide	Amide	Liquid	8	2.1
Ethyl Acetat	Ester, Carboxylic	Liquid	4	3.3
Ethylene Oxide	Heteocyclic Compound	Gas	<4	359
n-Hexane	Hydrocarbon	Liquid	4	6.3
Hydrogen Chloride	Inorganic Gas	Gas	30	>50
Methanol	Hydroxylic Compound	Liquid	<4	2.23
Methyl Chloride	Halogen Compound	Gas	4	0.38
Nitrobenzene	Nitro Compound	Liquid	4	16
Sodium Hydroxide	Inorganic Gas	Liquid	ND	ND
Sulfuric Acid	Inorganic Gas	Liquid	ND	ND
Tetrachloroethylene	Halogen Compound	Liquid	8	10
Tetrahydrofuran	Ether	Liquid	<4	>50
Toluene	Hydrocarbon	Liquid	8	25

## TARGET USES

- DRY PARTICULATE
- LIQUID SPLASH
- NON-HAZARDOUS CHEMICALS

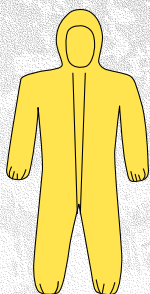
## TARGET INDUSTRIES

- CHEMICAL CLEANUP
- PETRO CHEMICAL
- WASTE MANAGEMENT REMEDIATION
- PAINTING

## FEATURES AND BENEFITS

- ASTM 1670 AND 1671 VIRAL AND BLOOD BORNE PATHOGENS
- PASS ASTM F903 FOR MANY CHEMICALS
- NFPA 99 ANTISTATIC
- LOW LINT

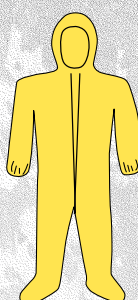




**3678B**

**M-5XL**

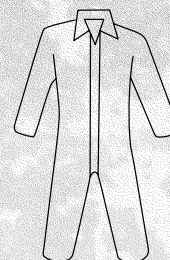
- Yellow coverall, storm flap over zipper front with elastic wrist/ankle and attached hood
- Bound seams
- 25 per case



**3679B**

**M-5XL**

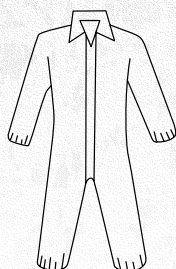
- Yellow coverall, storm flap over zipper front with elastic wrist/ankle and attached hood
- Bound seams
- 25 per case



**3700**

**M-5XL**

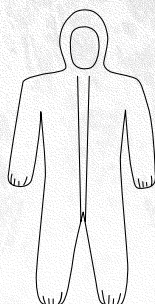
- White coverall, zipper front and collar
- 25 per case



**3702**

**M-5XL**

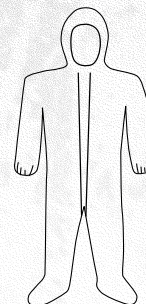
- White coverall, zipper front with elastic wrist and ankle
- 25 per case



**3706**

**M-5XL**

- White coverall, zipper front with elastic wrist/ankle and attached hood
- 25 per case



**3709**

**M-5XL**

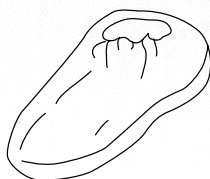
- White coverall, zipper front with elastic wrist/ankle and attached hood/boot
- 25 per case



**3712**

**One Size**

- White 18" sleeve
- 200 per case



**3713**

**One Size**

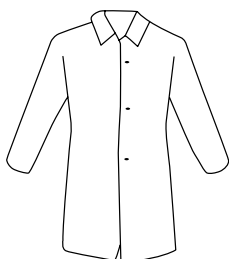
- Shoe cover
- 200 per case



**3714**

**One Size**

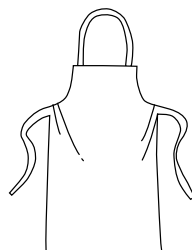
- White boot cover
- 200 per case



**3718**

**M-4XL**

- White lab coat, snap front closure, no pocket
- 30 per case



**3722**

**One Size**

- White apron, 28" x 36"
- 100 per case



**POSIWEAR® BA TYPICAL PROPERTIES**

Physical Properties	Test Methods	Units	POSIWEAR® BA Results
<b>Strength</b>			
Weight	IST 130.1	gsm	57.63/1.7oz/yd <sup>2</sup>
MD Tensile (Grab)	IST 110.1	lb/in	27.5
CD Tensile (Grab)	IST 110.1	lb/in	18.3
MD Elongation	IST 110.1	%	71.7
CD Elongation	IST 110.1	%	79.2
MD Tear Strength (Trapezoid)	IST 100.2	lb/in	7.3
CD Tear Strength (Trapezoid)	IST 100.2	lb/in	11.1
MD Tear Strength (Elmendorf)	IST 100.1	gms	531.3
CD Tear Strength (Elmendorf)	IST 100.1	gms	NA
MD Peel	AATCC 136	lb/in	0.76
CD Peel	AATCC 136	lb/in	NA
Bursting Strength (Mullen Burst)	IST 30.1	psi	32.9
<b>Barrier</b>			
Hydrostatic Head	IST 80.6-01 (Testex)	cm	191.3
Static Decay (MD) (50% RH) NFPA 99	IST 40.2	sec	nc
Resistance to Blood Penetration	ASTM 1670	n/a	Pass
<b>Comfort</b>			
M.V.T.R.	IST 70.2	g/m <sup>2</sup> /day	3380

**\*These physical properties represent typical values of the nonwoven fabric. These values should not be considered as a specification or certificate of material and or specification value.**

**TARGET USES**

- DRY PARTICULATE
- LIQUID SPLASH

**TARGET INDUSTRIES**

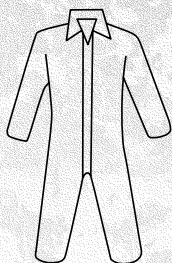
- INDUSTRIAL MANUFACTURING
- ENVIRONMENTAL REMEDIATION
- MAINTENANCE AND CLEANUP
- AUTOMOTIVE

**FEATURES AND BENEFITS**

- ASTM 1670 BLOODBORNE PATHOGENS
- PATENTED MICROPOROUS MATERIAL
- NFPA 99 ANTISTATIC
- LOW LINT



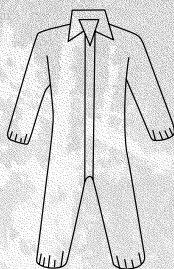




**3600**

**M-5XL**

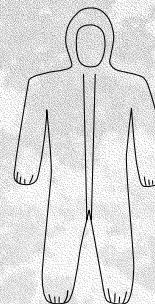
- White microporous coverall, zipper front and collar
- 25 per case



**3602**

**M-5XL**

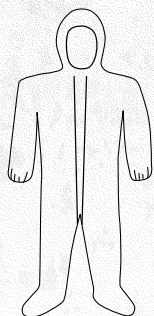
- White microporous coverall, zipper front with elastic wrist and ankle
- 25 per case



**3606**

**M-5XL**

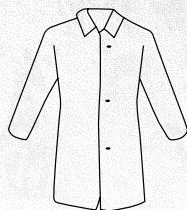
- White microporous coverall, zipper front with elastic wrist/ankle and attached hood
- 25 per case



**3609**

**M-5XL**

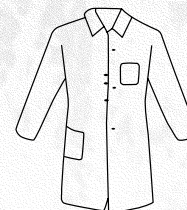
- White microporous coverall, zipper front with elastic wrist/ankle and attached hood/boot
- 25 per case



**3611**

**M-4XL**

- White microporous lab coat, snap front closure, no pocket
- 30 per case



**3620**

**M-4XL**

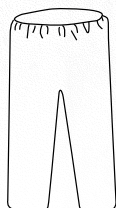
- White microporous lab coat, snap front closure with chest and hip pocket
- 30 per case



**3617**

**M-4XL**

- White microporous shirt with snap front closure
- 50 per case



**3616**

**M-4XL**

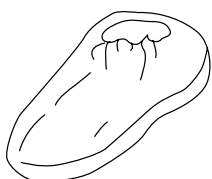
- White microporous pants with elastic waist
- 50 per case



**3612**

**One Size**

- White microporous 18" sleeve
- 200 per case



**3613**

**One Size**

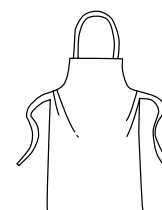
- White microporous shoe cover
- 200 per case



**3614**

**One Size**

- White microporous boot cover
- 200 per case



**3622**

**One Size**

- White microporous apron, 28" x 36"
- 100 per case



HEAT RESISTANT



CHEMICAL RESISTANT



CUT RESISTANT



IMPACT RESISTANT



FLAME RESISTANT



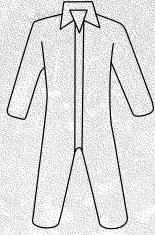
WATER RESISTANT



INSULATED



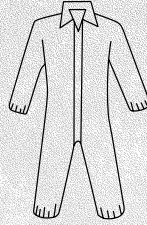
KEVLAR®



**C3800**

**M-5XL**

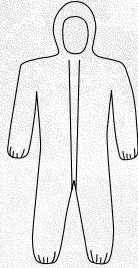
- White SMMMS coverall, zipper front and collar
- 25 per case



**C3802**

**M-5XL**

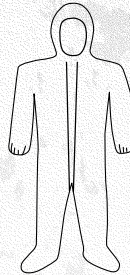
- White SMMMS coverall, zipper front with elastic wrist and ankle
- 25 per case



**C3806**

**M-5XL**

- White SMMMS coverall, zipper front with elastic wrist/ankle and attached hood
- 25 per case



**C3809**

**M-5XL**

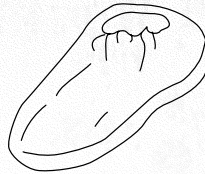
- White SMMMS coverall, zipper front with elastic wrist/ankle and attached hood/boot
- 25 per case



**C3812**

**One Size**

- White SMMMS 18" sleeve
- 200 per case



**C3813**

**One Size**

- White SMMMS shoe cover
- 200 per case

## TARGET USES

- DRY PARTICULATE
- LIGHT LIQUID SPRAY

## TARGET INDUSTRIES

- INDUSTRIAL MANUFACTURING
- FOOD PROCESSING
- GENERAL MAINTENANCE
- HEAVY DUST ENVIRONMENTS

## FEATURES AND BENEFITS

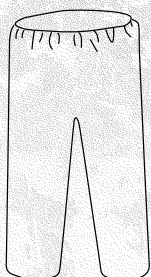
- FIVE LAYERS OF PROTECTION
- HIGH LEVEL OF BREATHABILITY
- SERGED SEAMS



### POSIWEAR® M3 TYPICAL PROPERTIES

Description	Test Methods	Units	POSIWEAR® M3
<b>Strength</b>			
Basis Weight	IST 130.1	gsm	55/1.6oz/yd <sup>2</sup>
Grab Tensile	ASTM D5034	lb.	36.7
Trap Tear	ASTM D5733	lb.	6.5
Surface Resistance	IST 80.6	N	0.99
Impact Penetration	AATCC 42	gsm	0.05
<b>Barrier</b>			
Hydrostatic Pressure	AATCC 127	cm	85
<b>Comfort</b>			
Air Permeability	IST 70.1	cfm	38

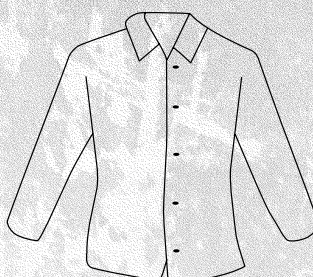
\*These physical properties represent typical values of the nonwoven fabric. These values should not be considered as a specification or certificate of material and or specification value.



**C3816**

**M-4XL**

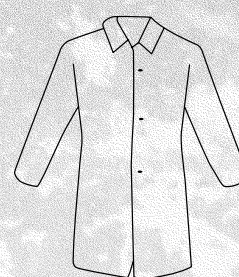
- White SMMMS pants with elastic waist
- 50 per case



**C3817**

**M-4XL**

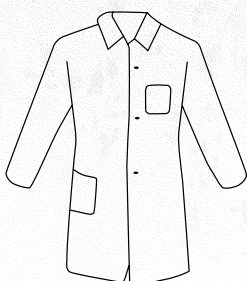
- White SMMMS shirt with snap front closure
- 50 per case



**C3818**

**M-4XL**

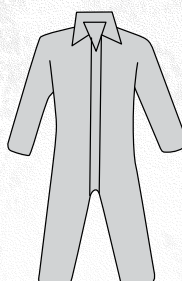
- White SMMMS lab coat, snap front closure, no pocket
- 30 per case



**C3820**

**M-4XL**

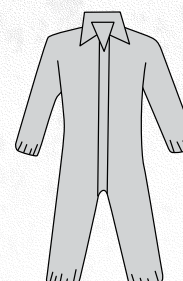
- White SMMMS lab coat, snap front closure with chest and hip pocket
- 30 per case



**C3900**

**M-5XL**

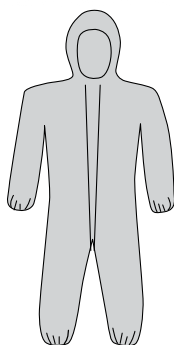
- Gray SMMMS coverall, zipper front and collar
- 25 per case



**C3902**

**M-5XL**

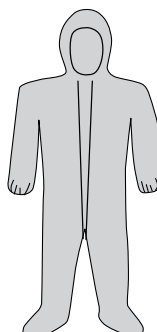
- Gray SMMMS coverall, zipper front with elastic wrist and ankle
- 25 per case



**C3906**

**M-5XL**

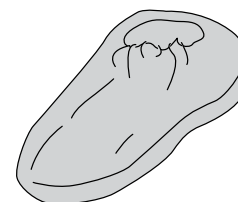
- Gray SMMMS coverall, zipper front with elastic wrist/ankle and attached hood
- 25 per case



**C3909**

**M-5XL**

- Gray SMMMS coverall, zipper front with elastic wrist/ankle and attached hood/boot
- 25 per case



**C3913**

**One Size**

- Gray SMMMS shoe cover
- 200 per case



HEAT RESISTANT



CHEMICAL RESISTANT



CUT RESISTANT



IMPACT RESISTANT



FLAME RESISTANT



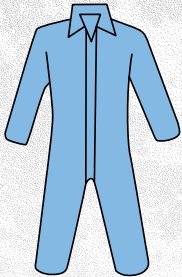
WATER RESISTANT



INSULATED



KEVLAR®

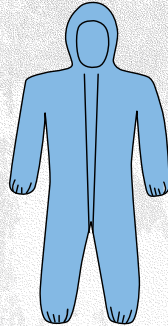


**3100**



**M-4XL**

- Blue flame-resistant coverall, zipper front and collar
- 25 per case

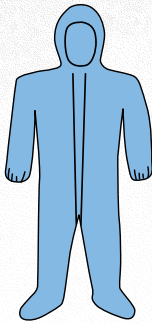


**3106**



**M-5XL**

- Blue flame resistant coverall, zipper front with elastic wrist/ankle and attached hood
- 25 per case



**3109**



**M-5XL**

- Blue flame resistant coverall, zipper front with elastic wrist/ankle and attached hood/boot
- 25 per case

**TARGET USES**

- DRY PARTICULATE
- FLAME RETARDANT

**TARGET INDUSTRIES**

- UTILITIES
- REFINERIES
- WELDING
- CONSTRUCTION

**FEATURES AND BENEFITS**

- PASSES TEST NFPA 701
- ZIPPER PASSES FLAME TEST TO MEET CFR 1610
- DESIGNED FOR USE OVER PROTECTIVE GEAR
- SELF-EXTINGUISHABLE
- SERGED SEAMS



**Posiwear® FR Typical Properties**

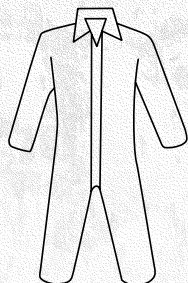
Physical Property	Test Methods	Units	Posiwear® FR
Weight	ASTM D3776	gsm	81/2.39oz/yd <sup>2</sup>
MD Tensile (Grab)	ASTM D5034	lb/in	27.1
CD Tensile (Grab)	ASTMD5034	lb/in	16.1
MD Tear Strength (Trapezoid)	ASTM D5733	lb/in	7.3
CD Tear Strength (Trapezoid)	ASTM D5733	lb/in	12

TARGET USES

- DRY PARTICULATE
- LIGHT LIQUID SPRAY

TARGET INDUSTRIES

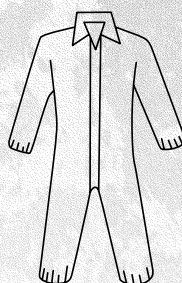
- ASBESTOS ABATEMENT
- REMEDIATION
- FOOD PROCESSING
- CLEANING



**3400**

**M-5XL**

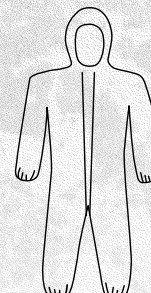
- White PE laminated coverall, zipper front and collar
- 25 per case



**3402**

**M-4XL**

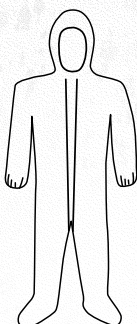
- White PE laminated coverall, zipper front with elastic wrist and ankle
- 25 per case



**3406**

**M-5XL**

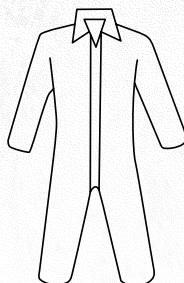
- White PE laminated coverall, zipper front with elastic wrist/ankle and attached hood
- 25 per case



**3409**

**M-5XL**

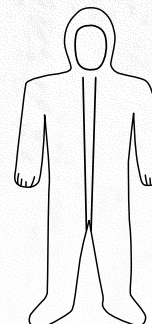
- White PE laminated coverall, zipper front with elastic wrist/ankle and attached hood/boot
- 25 per case



**U1130**

**M-5XL**

- White PE coated coverall, zipper front and collar
- 25 per case



**U1630**

**M-5XL**

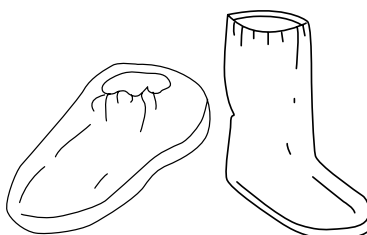
- White PE coated coverall, zipper front with elastic wrist/ankle and attached hood/boot
- 25 per case



**C3712**

**One Size**

- White PE coated 18" sleeve
- 200 per case



**3763**

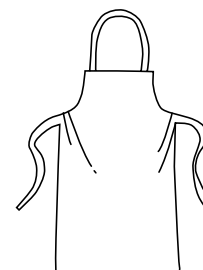
**One Size**

- White PE coated shoe cover
- 200 per case

**3764**

**One Size**

- White PE boot cover



**U2510**

**One Size**

- White PE coated apron, 28" x 36"
- 100 per case



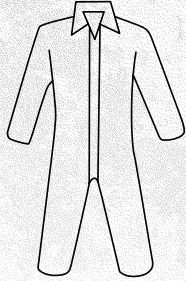
# MICROPOROUS

## TARGET USES

- DRY PARTICULATE
- LIGHT LIQUID SPRAY

## TARGET INDUSTRIES

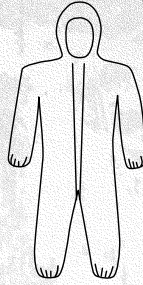
- ASBESTOS ABATEMENT
- REMEDIATION
- FOOD PROCESSING
- CLEANING



**3650**

**L-5XL**

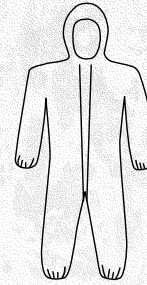
- White microporous coverall, zipper front and collar
- 25 per case



**3652**

**L-5XL**

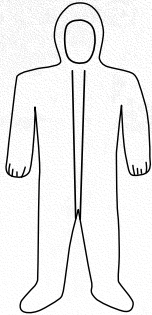
- White microporous coverall, zipper front with elastic wrist and ankle
- 25 per case



**3656**

**L-5XL**

- White microporous coverall, zipper front with elastic wrist/ankle and attached hood
- 25 per case



**3659**

**L-5XL**

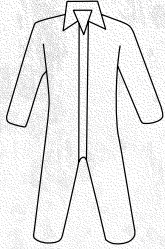
- White microporous coverall, zipper front with elastic wrist/ankle and attached hood/boot
- 25 per case

## TARGET USES

- DRY PARTICULATES

## TARGET INDUSTRIES

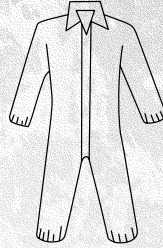
- GENERAL LABOR
- PHARMACEUTICALS
- CLEANING
- LABORATORY



**U1100**

**M-5XL**

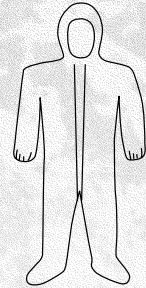
- White coverall, zipper front and collar
- 25 per case



**U1200**

**M-5XL**

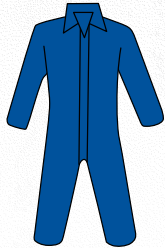
- White coverall, zipper front with elastic wrist and ankle
- 25 per case



**U1600**

**L-5XL**

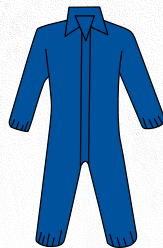
- White coverall, zipper front with elastic wrist/ankle and attached hood/boot
- 25 per case



**U1100B**

**M-5XL**

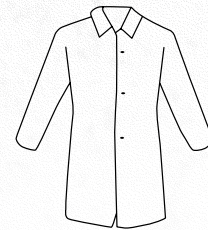
- Navy coverall, zipper front and collar
- 25 per case



**U1200B**

**M-4XL**

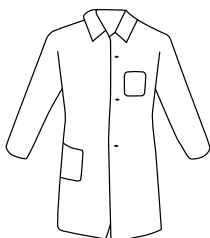
- Navy coverall, zipper front with elastic wrist and ankle
- 25 per case



**U1710**

**M-5XL**

- White lab coat, snap front closure, no pocket
- 30 per case



**U1730**

**M-5XL**

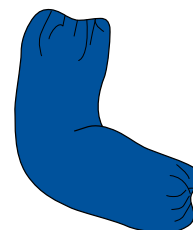
- White lab coat, snap front closure with chest and hip pocket
- 30 per case



**U1710B**

**M-4XL**

- Navy lab coat, snap front closure, no pocket
- 30 per case



**U2400B**

**One Size**

- Navy 18" sleeve
- 200 per case



HEAT RESISTANT



CHEMICAL RESISTANT



CUT RESISTANT



IMPACT RESISTANT



FLAME RESISTANT



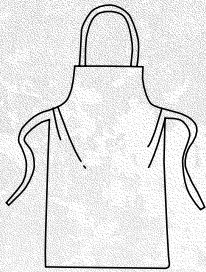
WATER RESISTANT



INSULATED



KEVLAR®



**U2500**

**One Size**

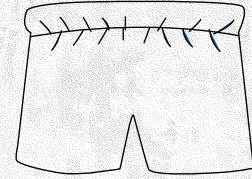
- Heavyweight white apron, 28" x 36"
- 100 per case



**U2400**

**One Size**

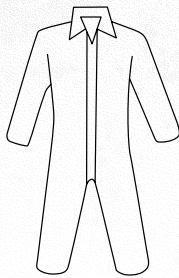
- Heavyweight white 18" sleeve
- 200 per case



**U2010**

**One Size**

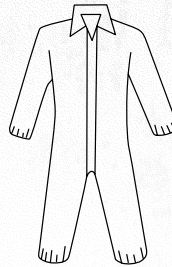
- Heavyweight white boxer shorts
- 100 per case



**3500**

**M-5XL**

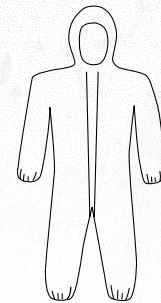
- White coverall, zipper front and collar
- 25 per case



**3502**

**M-5XL**

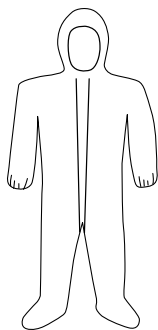
- White coverall, zipper front with elastic wrist and ankle
- 25 per case



**3506**

**M-5XL**

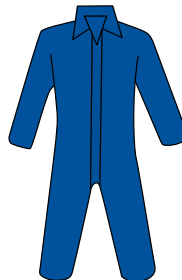
- White coverall, zipper front with elastic wrist/ankle and attached hood
- 25 per case



**3509**

**M-5XL**

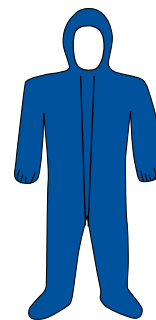
- White coverall, zipper front with elastic wrist/ankle and attached hood/boot
- 25 per case



**3575**

**M-5XL**

- Navy coverall, zipper front and collar
- 25 per case

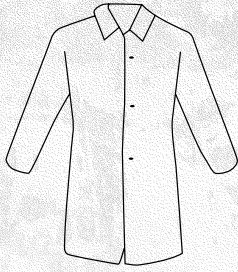


**3584**

**XL-5XL**

- Navy coverall, zipper front with elastic wrist/ankle and attached hood/boot
- 25 per case

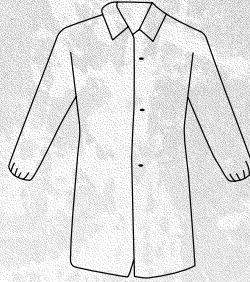




**3511**

**M-5XL**

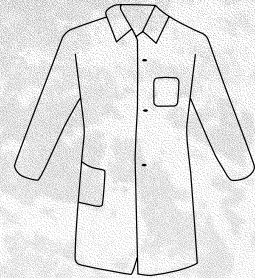
- White lab coat, snap front closure, no pocket
- 30 per case



**3512**

**M-5XL**

- White lab coat, snap front closure, no pocket with elastic wrist
- 30 per case



**3514**

**M-5XL**

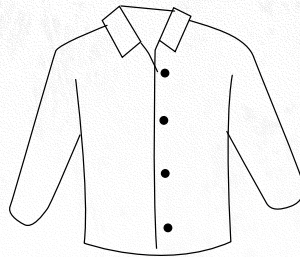
- White lab coat, snap front closure with chest and hip pocket
- 30 per case



**3511B**

**L-4XL**

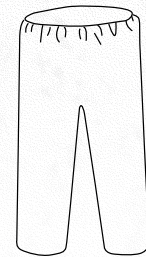
- Navy lab coat, snap front closure, no pocket
- 30 per case



**3515**

**M-4XL**

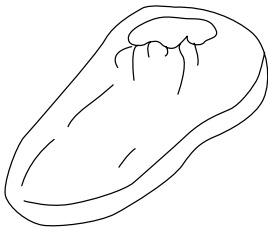
- White shirt with snap front closure
- 50 per case



**3516**

**M-5XL**

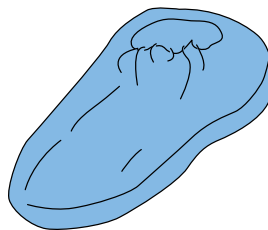
- White pants with elastic waist
- 50 per case



**3518**

**One Size**

- White shoe cover
- 200 per case



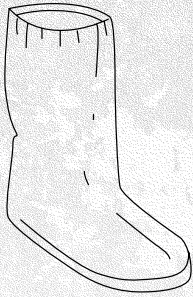
**3518BNS**

**One Size**

- Light blue shoe cover with non skid tread
- 200 per case



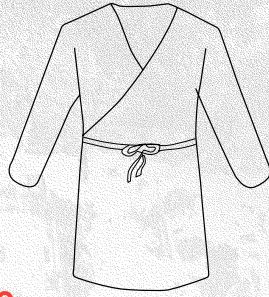
# STANDARD WEIGHT POLYPROPYLENE



**3519**

**One Size**

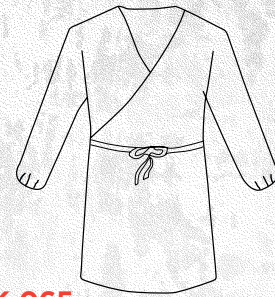
- White boot cover
- 200 per case



**3520**

**XL**

- White smock
- 50 per case



**USK-065**

**One Size**

- White pullover poultry smock with elastic wrist
- 50 per case

BOUFFANTS	ITEM DESCRIPTION	SIZES AVAILABLE	QUANTITY
UC-1000	White nylon bouffant	18", 21", 24", 28"	1000 per case
UB-1000	White polypropylene bouffant	18", 21", 24", 28"	1000 per case
UB-500	White polypropylene bouffant	21", 24", 28"	500 per case
UB-1000B	Blue polypropylene bouffant	21", 24"	1000 per case
UB-500B	Blue polypropylene bouffant	21", 24"	500 per case
BEARD COVERS	ITEM DESCRIPTION	SIZES AVAILABLE	QUANTITY
UCBC-1000	White nylon beard cover	19"	1000 per case
UBC-1000B	Blue polypropylene beard cover	18"	1000 per case
UBC-500	White polypropylene beard cover	18"	500 per case
UBC-1000	White polypropylene beard cover	18"	1000 per case

# RAINWEAR



cleaning  
janitorial  
construction  
food processing  
food services  
hazmat  
abatement  
oil/gas



**4045** **M-4XL**

- Jacket: 4-snap front closure, flap pockets, attached drawstring hood, vented cape back and underarm vents and open wrist with adjustable snap closures
- Overalls: open ankles with adjustable snap closures, adjustable suspenders, D-ring buckles and side snaps for sizing
- ASTM D 6413



**4033** **S-6XL**

- Jacket: 3M™ Scotchlite™ reflective tape, 5-snap closure, flap pockets with snap closure, corduroy collar and detachable hood
- Overalls: 3M™ Scotchlite™ reflective tape, adjustable suspenders, quick release buckles and snap fly
- ANSI Class 3; ISEA 107-2004



**4031** **S-5XL**

- Jacket: reflective tape on arms and torso, 5-snap closure, flap pockets with snap closure, detachable hood and vented back
- Overalls: reflective tape on pant leg, adjustable suspenders, quick release buckles and snap fly



**4035** **S-7XL**

- Jacket: 5-snap closure with storm flap, flap pockets with snap closure, detachable hood, corduroy collar and vented cape back
- Overalls: adjustable suspenders, quick release buckles, and snap fly
- ASTM D 6413



**4035FR** **M-8XL**

- Jacket: 5-snap closure with storm flap, flap pockets with snap closure, detachable hood, corduroy collar and vented cape back
- Overalls: adjustable suspenders, quick release buckles and snap fly
- ASTM D 6413



**4040** **M-5XL**

- Jacket: 4-snap closure with hook and loop storm flap, heat welded seams, snap-on splash guard, adjustable hook and loop wrist and hood closures and drawstring waist
- Overalls: adjustable hook and loop ankle closures, adjustable suspenders, quick release buckles and side snaps for sizing

**4036** **M-4XL**

- Jacket only

**4037** **M-4XL**

- Overall only



**4025E** **M-5XL**

- Jacket: 4-snap closure with interior storm flap, detachable hood, vented cape back, corduroy collar and flap pockets
- Overalls: adjustable suspenders and snap fly



**49102** **ONE SIZE**

- Attached hood
- 52" x 80" size can accommodate most body types
- Assorted colors



**4148**

**S-5XL**

- Snap front closures with storm flap
- Detachable hood and corduroy collar
- Vented cape back



**4160**

**M-3XL**

- Snap front closure with storm flap
- Detachable hood and corduroy collar
- Inner leg snaps form chaps
- Vented cape back
- Badge holder



**4160BFR**

**M-4XL**

- Snap front closure
- Detachable hood and corduroy collar
- Inner leg snaps form chaps
- Vented cape back with storm flap
- Badge holder
- ASTM D 6413



**8200**

**9-18**

- Latex
- 17" overshoe
- Netted lining and cross rib outer sole
- Adjustable side strap



**8400**

**M-2XL**

- 100% Latex
- Waterproof overshoe
- Textured sole



**8300**

**8-15**

- 100% PVC
- Reinforced toe and heel
- Removable insole. Unlined with storage bag
- Textured sole
- PVC can be cut to length



**8350**

**8-15**



- 100% PVC
- Steel toe and shank
- Removable insole. Unlined with storage bag
- Textured sole
- Passes ASTM F 2412-05 & ASTM F 2413-05 for Impact Resistance and Compression Resistance



**8250**

**8-16**

- 100% Latex
- Waterproof overshoe
- Ribbed sole
- 5 adjustable rust resistant buckles
- PVC can be cut to length



**8325**

**8-13**

- 100% PVC
- Worn over sock
- Reinforced toe and heel
- Lug sole



HEAT RESISTANT



CHEMICAL RESISTANT



CUT RESISTANT



IMPACT RESISTANT



FLAME RESISTANT



WATER RESISTANT



INSULATED



KEVLAR®

# WELDING APPAREL



automotive  
construction  
electrical  
manufacturing  
metal fabricating  
utilities

IRONCAT® is a new high end welding product line from West Chester Protective Gear. This line was developed with a knowledgeable and experienced team of welding professionals. Our main goal is to make sure users are protected while keeping economy in mind.



**7005**

**M-3XL**

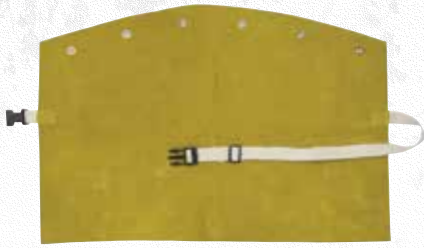
- Leather jacket
- Kevlar® thread
- Soapstone pocket on each sleeve
- Anodized and leather reinforced snaps
- Underarm gusset
- Wrist snap



**7000**

**M-5XL**

- Cape Sleeve
- Kevlar® thread
- Soapstone pocket on each sleeve
- Anodized and leather reinforced snaps
- Wrist snap



**7001**

**14", 20"**

- Leather bib
- Kevlar® thread
- Adjustable cotton strap
- Coordinates with M-XL cape sleeves



**7010**

**36", 42"**

- Bib apron
- Kevlar® thread
- Two chest pockets
- Adjustable cotton straps
- Side release buckle



**7011**

**36", 42", 48"**

- Split bib apron
- Kevlar® thread
- Two chest pockets
- Adjustable cotton straps
- Side release buckle

**7002** **20"**

- Coordinates with 2XL-3XL cape sleeves



**7012**

**18", 24"**

- Waist apron
- Kevlar® thread
- Adjustable cotton strap
- Side release buckle



**7030**

- Leather shoe protectors
- Kevlar® thread
- Adjustable buckles and snaps
- Double layer leather rivets at toe and ankle high



**7020**

**18"**

- Leather sleeves
- Kevlar® thread
- Adjustable buckles and snaps
- Anodized and leather reinforced snaps
- Snap at wrist



IRONTEX™ fabric is specially treated flame resistant cotton designed for lightweight and comfortable protection. The fabric will self-extinguish when exposed to flame and will not melt, shrink, or drip. IRONTEX™ conforms to ASTM D6413 flame retardant and washable test methods. Flame resistance lasts up to 100 home washings, and 50 commercial washings. 9 oz flame retardant cotton sateen that provides economical protection against light spark and spatter. Various styles available for level of protection and comfort.



**7050** **M-3XL**

- Jacket
- Anodized snaps and rivets
- Inside pocket
- Snap at wrist



**7051** **M-3XL**

- Leather bib
- Anodized snaps
- Adjustable cotton strap
- Coordinates with M-XL cape sleeves



**7052** **14", 20"**

- Bib
- Adjustable cotton strap
- Coordinates with cape sleeve



**7070** **18", 23"**

- Sleeves
- 2" wide elastic
- Ideal for light welding activity



**7071** **18", 23"**

- Sleeves
- ¾" wide elastic
- Ideal for light welding activity



**7072** **18"**

- Sleeves
- Wrist snap
- Ideal for light welding activity



**7080** **36", 42"**

- Bib apron
- Adjustable cotton strap



# APRONS/SLEEVES

automotive  
food processing  
food services  
manufacturing

APRONS	STYLE	POCKETS	SIZE
<b>Carpenter Waist Apron, 144/Case</b>			
Carpenter Waist Apron	A2412D3	3	12" x 24"
<b>Denim Apron with Grommets, 72/Case</b>			
No Pocket	A2836D1	0	28" x 36"
Hip Pocket	A2836D2	1	28" x 36"
Two Hip Pocket	A2836D22	2	28" x 36"
Chest Pocket	A2836D3	1	28" x 36"
Chest Pocket, Split Let	A2836DBTSL	1	28" x 36"
Hip and Chest Pockets	A2836D4	2	28" x 36"
Hip and Chest Pockets	A2842D4	2	28" x 42"
Two Hip and One Chest Pocket	A2832D5	2	28" x 36"
<b>Denim Apron with Attached Ties, 72/Case</b>			
No Pocket	A2836D1BT	0	28" x 36"
Chest Pocket	A2836D3BT	1	28" x 36"
Hip and Chest Pockets	A2836D4BT	2	28" x 36"
Hip and Chest Pockets	A2842D4BT	2	28" x 42"
Hip and Chest Pockets, Denim Neck Strap	A2836DD4DNS	2	28" x 36"
Two Hip, Swing Chest Pockets	A2836D62BT	3	28" x 36"

STYLE	THICKNESS	SIZE	COLOR
<b>Vinyl-Sewn w/ Grommets, 6/Case</b>			
UPC-36	8 mil	35" x 36"	Clear
UPC-45	8 mil	35" x 45"	Clear
UPC-48	8 mil	35" x 48"	Clear
UPW-36	8 mil	35" x 36"	White
UPW-45	8 mil	35" x 45"	White
UPW-48	8 mil	35" x 48"	White
<b>Heavyweight-Vinyl w/ Grommets, 3/Case</b>			
UW-20-45	20 mil	35" x 45"	White
UW-20-50	20 mil	35" x 50"	White
UG-20-45	20 mil	35" x 45"	Green
UG-20-50	20 mil	35" x 50"	Green
<b>Apron w/ Stomach Patch, Heavyweight Vinyl w/ Grommets, 3/Case</b>			
UG-20-45SP	20 mil	35" x 45"	Green
UG-20-50SP	20 mil	35" x 50"	Green

STYLE	THICKNESS	SIZE
<b>Vinyl-Die Cut, Blue, 72/Case</b>		
UE4B-45	4 mil	35" x 45"
UE6B-45	6 mil	35" x 45"
UE6B-48	6 mil	35" x 48"
UE6B-50	6 mil	35" x 50"
UE6B-55	6 mil	35" x 55"
<b>Vinyl-Die Cut, White, 72/Case</b>		
UE6W-45	6 mil	35" x 45"

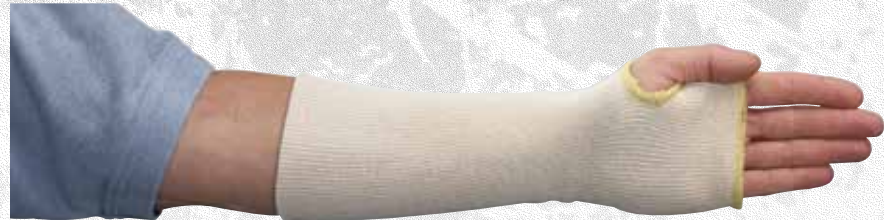
STYLE	THICKNESS	SIZE
<b>Vinyl-Sewn Edge, Blue, 72/Case</b>		
UHB-45	6 mil	35" x 45"
UHB-48	6 mil	35" x 48"
UHB-55	6 mil	35" x 55"
<b>Vinyl-Sewn Edge, White, 72/Case</b>		
UHW-45	6 mil	35" x 45"
<b>Vinyl-Sewn Edge, Blue, 72/Case</b>		
UPB-45	8 mil	35" x 45"
UPB-45	8 mil	35" x 48"
UPB-45	8 mil	35" x 50"
UPB-45	8 mil	35" x 55"

APRONS	STYLE	SIZE	COLOR
<b>POSIWEAR UB</b>			
POSIWEAR UB w/Ties	3722	28" x 36"	White
<b>SBP - PE COATED</b>			
PE Coated SBP w/Ties	U2510	28" x 36"	White
PE Coated SBP w/Ties	U25108	28" x 36"	Blue
<b>Polyethylene</b>			
Polyethylene w/Ties	2442PE	24" x 42"	White
Polyethylene w/Ties	2846PE	28" x 46"	White
Non-Embossed, 100/Bag	UDP-55-W	28" x 55"	White
Embossed, 100 Dispenser Box	DP-46	28" x 46"	White
Embossed, 100 Dispenser Box	DP-55	28" x 55"	White

SLEEVES	STYLE
<b>Spunbound Polypropylene</b>	
SBP 18" White Sleeve	U2400
<b>Spunbond Polypropylene - PE Coated</b>	
SBP 18" White Sleeve	C3712
<b>Polyethylene</b>	
1 mil 16", Clear	2416PE
1 mil 18", Clear	2418PE
1 mil 18", Clear	2418PE-1000
<b>POSIWEAR® UB</b>	
18" Sleeve, White	3712
<b>POSIWEAR® M3</b>	
SMMS 18" Sleeve, White	C3812
<b>Vinyl</b>	
4 mil 18" Sleeve, Blue	UVB-4HS
4 mil 18" Sleeve, Clear	UVC-4HS
8 mil 18" Sleeve, Blue	UVB-8HS
8 mil 18" Sleeve, Clear	UVC-8HS
<b>Kevlar® without Thumb Hole</b>	
10" Kevlar Sleeve	2510KT
12" Kevlar Sleeve	2512KT
14" Kevlar Sleeve	2514KT
16" Kevlar Sleeve	2516KT
18" Kevlar Sleeve	2518KT
24" Kevlar Sleeve	2524KT
<b>Kevlar® with Thumb Hole</b>	
10" Kevlar Sleeve	2510K
12" Kevlar Sleeve	2512K
14" Kevlar Sleeve	2514K
16" Kevlar Sleeve	2516K
18" Kevlar Sleeve	2518K
24" Kevlar Sleeve	2524K
<b>Kevlar® Single Ply</b>	
14" Single Ply Kevlar Sleeve	2514KE
<b>Kevlar® Single Ply w/ Thumb Hole</b>	
12" Single Ply Kevlar Sleeve	2512KTE
18" Single Ply Kevlar Sleeve	2518KTE
<b>Cotton</b>	
14" Cotton, Thumb Hole	2514NT
3" x 50 yds Cotton Tubing Role	2530
<b>Denim</b>	
18" Denim Sleeve Elastic at Both Ends	C18D8



Polypropylene



Cotton - Single Ply



Denim



Kevlar®



Polyethylene



POSIWEAR®

# INDEX

ITEM	PAGE	ITEM	PAGE	ITEM	PAGE	ITEM	PAGE
32L710	11	500-EA	33	706S	46	712LK	49
34K	18	500-EAF	33	706SL	46	712S	46
35K	16	500BD	34	708	49	712SG	46
35KD	16	500BD-BR	34	708C	49	712SKBSGT	44
35KDBS	16	500DC	33	708K	49	712SL	46
35KDBSL	16	500DP	37	708KL	49	712SLG	46
35KDEBS	17	500DP-A	37	708L	49	713HUTS	9, 17
35KDEBSL	17	500DP-AA	37	708LC	49	713KSNF	7, 17
35KDF	18	500DP-AAA	37	708S	46	713KSSN	6, 15
35KDFL	18	500L	33	708SC	45	713SN	45
35KJYD	15	500LC-A	32	708SCL	45	713SNC	7
35KL	16	500LDP	37	708SG	46	713SNF	8
52L100	61	500LDP-A	37	708SK	45	713SNL	45
52L101	61	500LHO-EA	33	708SKBS	45	713SNL/S	45
52L102	61	500P	35	708SKBSG	44	713SNL/XS	45
52N100	59	500RHO-EA	33	708SKBSL	45	713SNTPRG	17, 40
52N102	59	500SC	34	708SKBSLG	44	713SPA	8
52N103	59	500SCL	34	708SKBSY	45	713STB	45
52N104	59	500Y	32	708SKH	44	713STW	45
100	35	501	35	708SKL	45	713SUC	10
100P	35	528	34	708SL	46	713SUCB	10
100Y	35	528DP	37	708SLC	11	713SUCG	10
105	60	548	34	708SLCE	11	713SUGB	10
200	35	550-A	32	708SLCL	11	714S	46
201	62	558	34	708SLG	46	714SG	46
202	62	558L	34	708SY	46	714SL	46
203	62	558OR	32	710BKWK	49	714SLG	46
205	62	558Y	32	710K	49	715SBP	8
350	34	700KSLC	11, 16	710KGRPD	48	715SLC	11
350-EA	34	700SLC	11	710KORPD	48	715SNFB	7
350L-EA	34	701CRLB	11, 14	710KSS	15	715SNFFB	7
400-SC	34	701CRNF	7, 14	710KSSN	6, 15	715SNFLB	7
400-SCL	34	701CRPB	10, 14	710S	46	715SNFLW	7
400-SCR	34	703CONF	6, 14	710SANF	6, 15	715SNFP	7
450DP	37	703COPB	9, 14	710SG	46	715SNFTIP	5
500	33	705	48	710SL	46	715SNFTK	5
500-A	32	705-14	48	710SLG	46	715SNFTKD	5
500-AA	32	705CGNF	6, 14	710TSNF	7	715SNFTP	5
500-AAA	32	705L	48	712K	49	715SUGB	10

# INDEX

ITEM	PAGE	ITEM	PAGE	ITEM	PAGE	ITEM	PAGE
715SUGBC	10	858	34	1007R	57	3001	61
715TSSL	11	900-AA	33	1017	56	3003	61
718BT	51	900-EA	33	1017OR	58	3100	74
718HSPU	9,16	905	48	1017ORF	58	3106	74
720DGU	9,17	930	24	1017R	57	3109	74
720DWU	9,17	930K	24	1017RF	56	3115	62
730T	16	940	24	1027	56	3312	61
730TBN	6,16	940R	24	1027L	56	3343	61
730TBNDT	16	945	23	1027OR	58	3400	75
730TBU	9,17	950-EA	33	1027ORF	58	3402	75
730TGLP	15	980	29	1027R	57	3406	75
730TGU	9,16	983K	29	1027RF	56	3409	75
750	47	984K	28	1047	56	3500	78
750C	47	988KT	29	1047R	57	3502	78
750DP	37	990	28	1047RF	56	3506	78
750L	47	990-I	28	1047Y	58	3509	78
750LC	47	990K	28	1087	56	3511	79
750PD	47	990K-A	28	1087RF	56	3511B	79
750PDL	47	990KOT	28	1555	36	3512	79
750R	47	990KOT-B	28	2000	60	3514	79
750RKW	47	990KOTT	28	2086GLF	22	3515	79
755C	47	990LS	29	2208	61	3516	79
775SP	15	990T	29	2224	59	3518	79
780K	49	991K	31	2312	61	3518BNS	79
780LK	49	993K	29	2343	61	3519	80
790K	53	994	30	2400R	65	3520	80
790NI	51	994K	30	2500	63	3575	78
790NIBT	51	994KF	30	2500I	63	3584	78
800-A	32	994KP	30	2550	63	3600	71
800-AAA	32	995	28	2700	65	3602	71
800-EA	33	995-K	28	2710	65	3606	71
800DP	37	995-KOT	28	2750	65	3609	71
800DP-A	37	999	29	2765	65	3611	71
800DP-AAA	37	999KF	29	2800	63	3612	71
800SC	34	999KT	29	2800I	63	3613	71
805	48	1007	56	2900	64	3614	71
805L	48	1007OR	58	2910	64	3616	71
828	33	1007ORF	58	2920	64	3617	71
848	34	1007ORV	57	2950	64	3620	71

# INDEX

ITEM	PAGE	ITEM	PAGE	ITEM	PAGE	ITEM	PAGE
3622	71	4550RFFC	60	8200	83	86350	26, 42
3650	76	5000	35	8250	83	86400	42
3652	76	5050	35	8300	83	86500	41
3656	76	5150	35	8325	83	86525	42
3659	76	5555	35	8350	83	86525G	42
3678B	69	5558P	33	8400	83	86540	41
3679B	69	6000	25	9010	23	86550	26, 42
3700	69	6010	25	9011	23	86551	26
3702	69	6020	25	9012L	23	86552	26
3706	69	6021	25	9020	23	86650	41
3709	69	6030	25	9030	22	86700	42
3712	69	6130	26	9031	22	86710	40
3713	69	6140	26	9040	23	86711	39
3714	69	6141	26	9041	23	86712	39
3718	69	6142	26	9050	22	86712B	39
3722	69	6143	25	9051	22	86713	39
3763	75	7000	85	9060	22	86713B	39
3764	75	7001	85	9061	22	86715	16, 40
3962	62	7002	85	9100	25	86716	40
3962I	62	7005	85	9400	23	86718	39
4000	60	7010	85	9401	23	86810	40
4025E	82	7011	85	9901K	28	96650	41
4031	82	7012	85	9920K	31	BO2SNI	53
4033	82	7020	85	9920KT	31	B710SBS	44
4035	82	7030	85	9925K	31	B710SBSL	44
4035FR	82	7050	86	9940K	30	BG42SWSJI	53
4036	82	7051	86	9940KF	30	C3712	75
4037	82	7052	86	9940KT	30	C3800	72
4040	82	7070	86	9940KWT	30	C3802	72
4045	82	7071	86	23224	59	C3806	72
4050	60	7072	86	32212	59	C3809	72
4060	60	7080	86	33313	61	C3812	72
4148	83	7900BL	53	33413	59	C3813	72
4160	83	7900BLG	53	33418	59	C3816	73
4160BFR	83	7900G	53	49102	82	C3817	73
4343	61	7900K	53	86000	42	C3818	73
4344	61	7924GR	53	86110	41	C3820	73
4550	60	7930	53	86150	41	C3900	73
4550FC	60	8000	35	86300	41	C3902	73

# INDEX

ITEM	PAGE	ITEM	PAGE	ITEM	PAGE
C3906	73	J212	57	KJ8LI	46
C3909	73	J214	57	KS900-EA	33
C3913	73	K01I	49	KS990K	18, 29
FM18KWK	52	K01PDI	49	KS991K	18, 31
G03SI	53	K21I	49	LM6000	31
GG42SI	53	K708SKBSW	44	LM991	31
GS21I	49	K708SKBSWL	44	M18BT	52
GWB51S1	52	K708SKHW	44	M18G	52
HVG700SLC	11	K708SKW	44	M18KW	52
HVO1555	36	K708SKWL	44	SOK01PDI	48
HVO1555B	36	K710SBW	45	SOK01PDLI	48
HVO500	36	K710SBWL	45	T24KW	53
HVO5000	36	K713S	45	T24KWL	53
HVO5555	36	K7100S	45	T25NW	53
HVO700SLC	11	K7100SL	45	U1100	77
HVO990K	28	K7100SY	45	U1100B	77
HVY710HSNF	6, 15	K80SCNCGRI	50	U1130	75
HVY713SUTS	10	K80SCNCORI	50	U1200	77
IC5	27	K81CNCGRI	50	U1200B	77
IC5DP	27	K81CNCORI	50	U1600	77
IC6	27	K81SCNCGRI	50	U1630	75
IC65	27	K81SCNCGRIPD	50	U1710	77
IC8	27	K81SCNCI	51	U1710B	77
IC8DP	27	K81SCNCORI	50	U1730	77
IC9	27	K81SCNCORIPD	50	U2010	78
J1007RF	57	K81SCNCRI	50	U2400	78
J1017RF	57	K81SNI	51	U2400B	77
J1017YBT	58	K81SPNJRI	50	U2500	78
J1027	56	K83SCNCGRI	50	U2510	75
J1027RF	57	K83SCNCORI	50	USK-065	80
J1027RY	58	K8I	49		
J1047RF	57	KBJ9I	47		
J1087RF	57	KBJ9LI	47		
J1207RF	57	KBJ9PDI	47		
J1217RF	57	KBJ9PDLI	47		
J1227RF	57	KJ01I	46		
J1247RF	57	KJ55I	46		
J1327	57	KJ55LI	46		
J210	57	KJ8I	46		

# CHEMICAL RESISTANCE GUIDE

CHEMICAL	NITRILE	NEOPRENE	LATEX	PVC
ACETALDEHYDE	P	G	G	NR
ACETIC ACID	G	E	E	F
ACETONE	NT	G	E	NR
ACETONITRILE	G	E	E	NR
ACRYLIC ACID	F	G	G	NR
ALLYL ALCOHOL	F	G	G	P
AMMONIUM FLOURIDE	E	E	E	E
AMMONIUM HYDROXIDE	E	E	G	E
AMYL ACETATE	E	P	NR	P
AMYL ALCOHOL	E	E	E	NR
ANILINE	NR	G	G	F
AQUA REGIA	E	G	NR	G
BENZALDEHYDE	NR	F	P	NR
BENZENE	P	NR	NR	NR
BROMOPROPIONIC ACID	G	G	G	G
BUTYL ACETATE	F	P	NR	NR
BUTYL ALCOHOL	E	E	E	G
BUTYL CELLOSOLVE	E	G	G	P
BUTYROLACTONE	NR	E	E	NR
CARBON DISULFIDE	F	NR	NR	NR
CARBON TETRACHLORIDE	G	NR	NR	P
CELLOSOLVE ACETATE	G	G	G	NR
CHLOROFORM	NR	NR	NR	NR
CHROMIC ACID	G	NR	NR	G
CITRIC ACID	E	E	E	E
CYCLOEXANOL	E	G	G	E
DIACETONE ALCOHOL	E	G	G	NR
DIBUTYL PHTHALATE	E	E	G	NR
DIETHYLAMINE	F	NR	NR	NR
DIISOBUTYL KETONE	E	P	P	P
DIMETHYL SULFOXIDE	E	E	E	NR
DIOCTYL PHTHALATE	G	E	P	NR
ETHYL ACETATE	NR	F	F	NR
ETHYL ALCOHOL	E	G	G	G
ETHYL ETHER	E	NR	NR	NR
ETHYL GLYCOL ETHER	NT	NT	NT	NT
ETHYLENE GLYCOL	E	E	E	E
FORMALDEHYDE	E	E	G	E
FORMIC ACID	F	E	E	E
FREON TF	E	NR	NR	NR
FURFURAL	NR	G	F	NR
GASOLINE	E	NR	NR	P
GLUTARRALDEHYDE	E	NT	E	E
HEXANE	E	P	NR	NR
HEXANETHYLDISILAZINE	E	F	F	P
HYDRAZINE	E	E	E	E

E = Excellent G = Good F = Fair P = Poor NR = Not Recommended NT = Not Tested

CHEMICAL	NITRILE	NEOPRENE	LATEX	PVC
HYDROCHLORIC ACID 10%	E	E	E	E
HYDROCHLORIC ACID 38%	E	E	E	E
HYDROCHLORIC ACID 48%	E	NT	E	G
HYDROGEN PEROXIDE	E	E	E	E
HYDROQUINONE	E	E	E	E
ISO BUTYL ALCOHOL	E	E	G	F
ISO PROPYL ALCOHOL	E	E	G	G
ISO-OCTANE	E	P	NR	P
KEROSENE	E	P	NR	F
LACTIC ACID	E	E	E	E
LAURIC ACID	E	E	E	F
MALIC ACID	E	E	E	G
METHYL ALCOHOL	E	G	G	G
METHYL CELLOSOLVE	F	NT	G	P
METHYL ETHYL KETONE	NR	P	F	NR
METHYLAMINE	E	E	E	E
MINERAL SPIRITS RULE 66	E	G	NR	F
MONOETHANOLAMINE	E	E	E	E
MORPHOLINR	NR	G	F	NR
MURIATIC ACID	E	E	E	G
NITRIC ACID 10%	E	E	G	G
NITRIC ACID 70%	NR	NR	NR	F
NITROMETHANE	F	E	G	P
NITROPROPANE	NR	G	G	NR
OCTYL ALCOHOL	E	E	E	F
OLEIC ACID	E	G	G	F
OXALIC ACID	E	E	E	E
PALMITIC ACID	G	E	G	G
PENTACHLOROPHENOL	E	NT	NR	F
PENTANE	E	G	P	NR
PERCHLORIC ACID	E	E	G	E
PHENOL	NR	E	G	G
PHOSPHORIC ACID	E	G	F	G
POTASSIUM HYDROXIDE	E	E	E	E
PROPYL ACETATE	F	P	P	NR
PROPYL ALCOHOL	E	E	G	F
PYRIDINE	NR	P	F	NR
RUBBER SOLVENT	E	NR	NR	NR
SODIUM HYDROXIDE	E	E	E	E
STODDARD SOLVENT	E	G	NT	NR
SULFURIC ACID 47%	E	E	E	G
SULFURIC ACID 95%	NR	NR	NR	G
TANNIC ACID	E	E	E	E
TETRACHLOROTYLENE	NR	NR	NR	NR
TOLUENE	F	NR	NR	NR
TRICRESYL PHOSPHATE	E	E	G	F
TRIETHANOLAMINE	NT	NT	E	E
TURPENTINE	E	NR	NR	P
XYLENE	G	NR	NR	NR

## Physical Performance Chart for Unsupported Gloves

CHEMICAL	VINYL	RUBBER	NITRILE	NEOPRENE
ABRASION RESISTANCE	E	G	G	G
ELONGATION	G	E	E	F
HEAT RESISTANCE	E	E	F	P
TEAR RESISTANCE	G	G	G	F
TENSILE STRENGTH	E	E	E	F

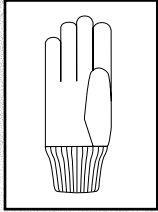
## Guide to Chemical Resistance

The following is a general guide to chemical resistance of West Chester brand products. Note that this guide in no way warrants the performance of any glove, but is intended solely to provide resistance characteristics of various glove materials to given chemical agents. In every case, resistance can be affected by factors such as ambient or solution temperature, chemical concentration, length of time in direct contact with chemicals, material thickness of glove and other factors. Preliminary testing of glove suitability should always precede use.

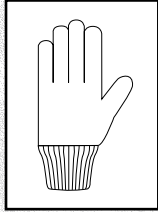


## GLOVE PATTERNS

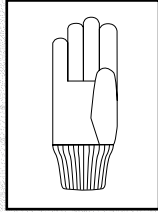
**Clute Style**



**Reversible Style**

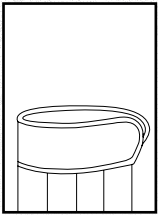


**Gunn Style**

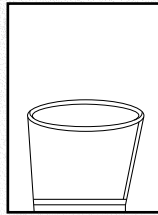


## CUFF STYLES

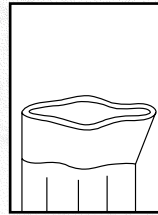
**Safety Cuff**



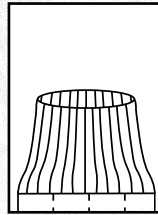
**Gauntlet Cuff**



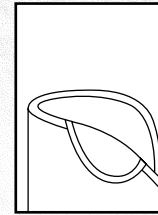
**Band Top**



**Knit Wrist**



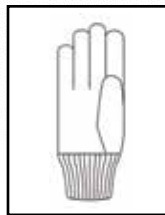
**Slip On**



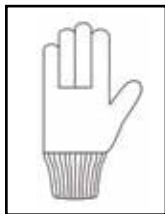
## HEM COLORS

Color-Coded Hems for Leathers, Kevlar® and Coated Gloves
XXS - PURPLE
XS- YELLOW
S - RED
M - GREEN
L - BROWN
XL- DARK BLUE
XXL - BLACK
XXXL - ORANGE
Strings
MEN'S - WHITE
WOMEN'S LIGHT BLUE
YOUTH - YELLOW

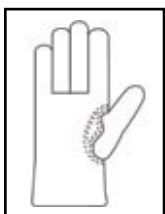
## THUMB STYLES



**Straight Thumb**  
For closed-fisted work (gripping). The seams are out of the work surface during gripping activities.

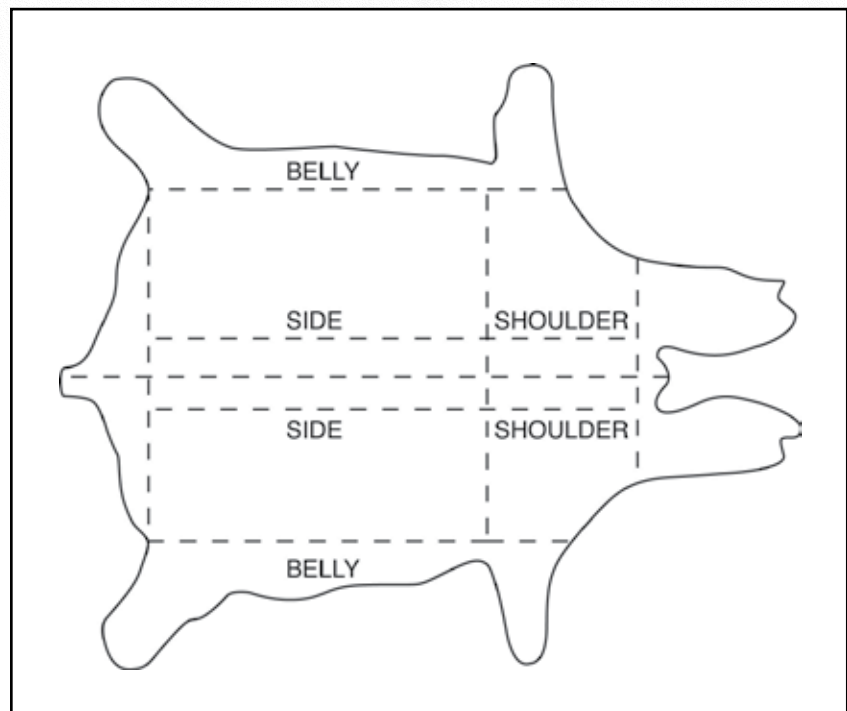


**Wing Thumb**  
For open-handed work (pushing, pulling). The seams are out of the work surface during open-handed activities.



**Keystone Thumb**  
Use for same activities as wing thumb styles, but affords the strongest construction method. It is the most comfortable glove to wear.

## CUTS OF LEATHER



# NOTES



Lycra is a registered trademark owned by Invista, Dupont and Kevlar are trademarks or registered trademarks of DuPont or its affiliates, 3M, Scotchlite and Thinsulate are trademarks of 3M.

West Chester Protective Gear provides a wide variety of products, for many uses. Please use the specific product for the recommended uses. Products that provide cut protection, or that are tested to different cut protection levels are not to be used to provide protection against powered blades, or other sharp rotating equipment. Products that provide protection against, or are insulated to protect against injury from heat, sparks, or open flame are not to be considered fire-proof. Products that are provided for use when handling chemicals do not eliminate or completely prevent injury or harm due to exposure to chemicals. It is the responsibility of the user to test product prior to use to ensure the product will meet your exact applications.



**WESTCHESTER**  
PROTECTIVE GEAR

**11500 Canal Road**

**Cincinnati, Ohio 45241**

tel. 800.647.1900

fax. 513.539.2827

[www.westchestergear.com](http://www.westchestergear.com)

